

TPI1 Antibody (C-term)
Purified Rabbit Polyclonal Antibody (Pab)
Catalog # AP2917b

Specification

TPI1 Antibody (C-term) - Product Information

Application	WB, IHC-P, FC,E
Primary Accession	P60174
Other Accession	P48500 , P00939 , P17751 , Q60HC9 , Q5E956
Reactivity	Human, Mouse, Rat
Predicted	Bovine, Monkey, Rabbit
Host	Rabbit
Clonality	Polyclonal
Isotype	Rabbit IgG
Antigen Region	258-286

TPI1 Antibody (C-term) - Additional Information

Gene ID 7167

Other Names

Triosephosphate isomerase, TIM, Triose-phosphate isomerase, TPI1, TPI

Target/Specificity

This TPI1 antibody is generated from rabbits immunized with a KLH conjugated synthetic peptide between 258-286 amino acids from the C-terminal region of human TPI1.

Dilution

WB~~1:1000
IHC-P~~1:50~100
FC~~1:10~50
E~~Use at an assay dependent concentration.

Format

Purified polyclonal antibody supplied in PBS with 0.09% (W/V) sodium azide. This antibody is prepared by Saturated Ammonium Sulfate (SAS) precipitation followed by dialysis against PBS.

Storage

Maintain refrigerated at 2-8°C for up to 2 weeks. For long term storage store at -20°C in small aliquots to prevent freeze-thaw cycles.

Precautions

TPI1 Antibody (C-term) is for research use only and not for use in diagnostic or therapeutic procedures.

TPI1 Antibody (C-term) - Protein Information

Name TPI1

Synonyms TPI

Function Triosephosphate isomerase is an extremely efficient metabolic enzyme that catalyzes the interconversion between dihydroxyacetone phosphate (DHAP) and D-glyceraldehyde-3-phosphate (G3P) in glycolysis and gluconeogenesis.

Cellular Location

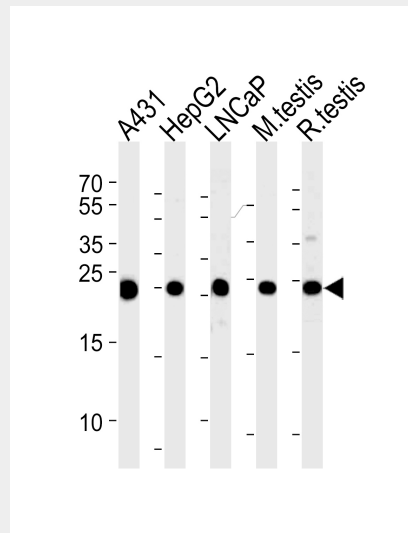
Cytoplasm {ECO:0000255|PROSITE-ProRule:PRU10127}.

TPI1 Antibody (C-term) - Protocols

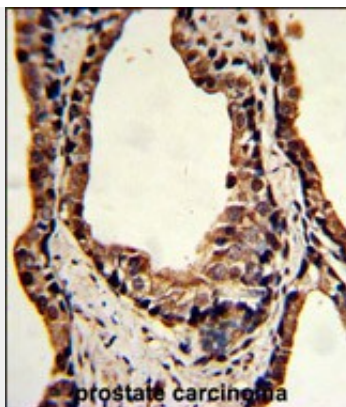
Provided below are standard protocols that you may find useful for product applications.

- [Western Blot](#)
- [Blocking Peptides](#)
- [Dot Blot](#)
- [Immunohistochemistry](#)
- [Immunofluorescence](#)
- [Immunoprecipitation](#)
- [Flow Cytometry](#)
- [Cell Culture](#)

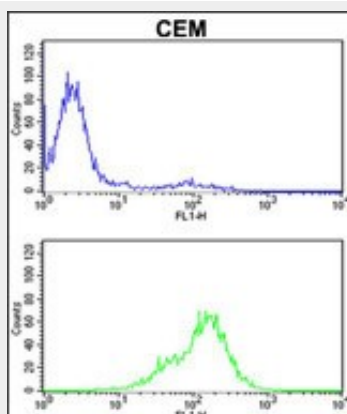
TPI1 Antibody (C-term) - Images



Western blot analysis of lysates from A431, HepG2, LNCaP cell line and mouse testis, rat testis tissue lysates (from left to right), using TPI1 Antibody (C-term) (Cat. #AP2917b). AP2917b was diluted at 1:1000 at each lane. A goat anti-rabbit IgG H&L(HRP) at 1:5000 dilution was used as the secondary antibody. Lysate at 35ug per lane.



Formalin-fixed and paraffin-embedded human prostate carcinoma reacted with TPI1 Antibody (C-term), which was peroxidase-conjugated to the secondary antibody, followed by DAB staining. This data demonstrates the use of this antibody for immunohistochemistry; clinical relevance has not been evaluated.



TPI1 Antibody (C-term) (Cat. #AP2917b) flow cytometric analysis of CEM cells (bottom histogram) compared to a negative control cell (top histogram). FITC-conjugated goat-anti-rabbit secondary antibodies were used for the analysis.

TPI1 Antibody (C-term) - Background

TPI1 is an enzyme, consisting of two identical proteins, which catalyzes the isomerization of glyceraldehydes 3-phosphate (G3P) and dihydroxy-acetone phosphate (DHAP) in glycolysis and gluconeogenesis.

TPI1 Antibody (C-term) - References

Martins-de-Souza,D., et.al., BMC Psychiatry 9, 17 (2009)