

**TUFM Antibody (N-term)**  
**Purified Rabbit Polyclonal Antibody (Pab)**  
**Catalog # AP2918a****Specification**

---

**TUFM Antibody (N-term) - Product Information**

Application	WB, FC, IHC-P,E
Primary Accession	<a href="#">P49411</a>
Other Accession	<a href="#">P85834</a> , <a href="#">Q8BFR5</a> , <a href="#">P49410</a>
Reactivity	Human
Predicted	Bovine, Mouse, Rat
Host	Rabbit
Clonality	Polyclonal
Isotype	Rabbit IgG
Antigen Region	75-104

**TUFM Antibody (N-term) - Additional Information****Gene ID** 7284**Other Names**

Elongation factor Tu, mitochondrial, EF-Tu, P43, TUFM

**Target/Specificity**

This TUFM antibody is generated from rabbits immunized with a KLH conjugated synthetic peptide between 75-104 amino acids from the N-terminal region of human TUFM.

**Dilution**

WB~~1:1000

FC~~1:10~50

IHC-P~~1:50~100

E~~Use at an assay dependent concentration.

**Format**

Purified polyclonal antibody supplied in PBS with 0.09% (W/V) sodium azide. This antibody is prepared by Saturated Ammonium Sulfate (SAS) precipitation followed by dialysis against PBS.

**Storage**

Maintain refrigerated at 2-8°C for up to 2 weeks. For long term storage store at -20°C in small aliquots to prevent freeze-thaw cycles.

**Precautions**

TUFM Antibody (N-term) is for research use only and not for use in diagnostic or therapeutic procedures.

**TUFM Antibody (N-term) - Protein Information****Name** TUFM

**Function** GTP hydrolase that promotes the GTP-dependent binding of aminoacyl-tRNA to the A-site of ribosomes during protein biosynthesis. Also plays a role in the regulation of autophagy and innate immunity. Recruits ATG5-ATG12 and NLRX1 at mitochondria and serves as a checkpoint of the RIGI-MAVS pathway. In turn, inhibits RLR-mediated type I interferon while promoting autophagy.

**Cellular Location**

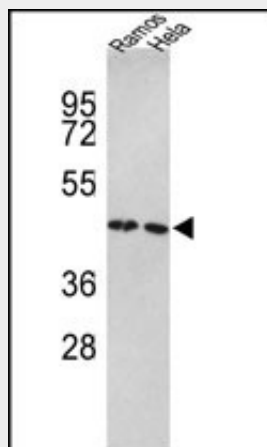
Mitochondrion.

**TUFM Antibody (N-term) - Protocols**

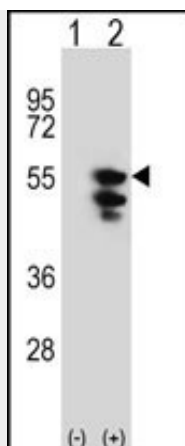
Provided below are standard protocols that you may find useful for product applications.

- [Western Blot](#)
- [Blocking Peptides](#)
- [Dot Blot](#)
- [Immunohistochemistry](#)
- [Immunofluorescence](#)
- [Immunoprecipitation](#)
- [Flow Cytometry](#)
- [Cell Culture](#)

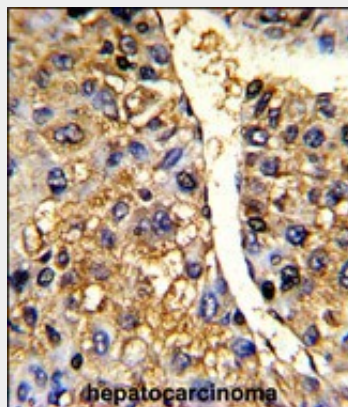
**TUFM Antibody (N-term) - Images**



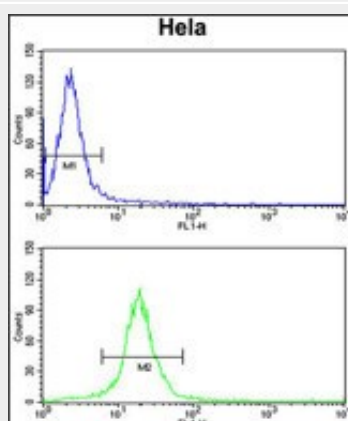
Western blot analysis of TUFM Antibody (N-term) (Cat. #AP2918a) in Ramos, HeLa cell line lysates (35ug/lane). TUFM (arrow) was detected using the purified Pab.



Western blot analysis of TUFM (arrow) using rabbit polyclonal TUFM Antibody (N-term) (Cat. #AP2918a). 293 cell lysates (2 ug/lane) either nontransfected (Lane 1) or transiently transfected (Lane 2) with the TUFM gene.



Formalin-fixed and paraffin-embedded human hepatocarcinoma reacted with TUFM Antibody (N-term), which was peroxidase-conjugated to the secondary antibody, followed by DAB staining. This data demonstrates the use of this antibody for immunohistochemistry; clinical relevance has not been evaluated.



TUFM Antibody (N-term) (Cat.#AP2918a) flow cytometry analysis of Hela cells (bottom histogram) compared to a negative control cell (top histogram). FITC-conjugated goat-anti-rabbit secondary antibodies were used for the analysis.

#### TUFM Antibody (N-term) - Background

TUFM is a protein which participates in protein translation in mitochondria. This protein promotes

the GTP-dependent binding of aminoacyl-tRNA to the A-site of ribosomes during protein biosynthesis.

#### **TUFM Antibody (N-term) - References**

Valente,L., et.al., Biochim. Biophys. Acta 1792 (8), 791-795 (2009)

Bogenhagen,D.F., et.al., J. Biol. Chem. 283 (6), 3665-3675 (2008)

#### **TUFM Antibody (N-term) - Citations**

- [TUFM downregulation induces epithelial-mesenchymal transition and invasion in lung cancer cells via a mechanism involving AMPK-GSK3 \$\beta\$  signaling.](#)