

WDR1 Antibody (C-term)
Purified Rabbit Polyclonal Antibody (Pab)
Catalog # AP2919b**Specification**

WDR1 Antibody (C-term) - Product Information

Application	WB,E
Primary Accession	O75083
Other Accession	Q2KJH4
Reactivity	Human
Predicted	Bovine
Host	Rabbit
Clonality	Polyclonal
Isotype	Rabbit IgG
Antigen Region	548-577

WDR1 Antibody (C-term) - Additional Information**Gene ID** 9948**Other Names**

WD repeat-containing protein 1, Actin-interacting protein 1, AIP1, NORI-1, WDR1

Target/Specificity

This WDR1 antibody is generated from rabbits immunized with a KLH conjugated synthetic peptide between 548-577 amino acids from the C-terminal region of human WDR1.

Dilution

WB~~1:1000

E~~Use at an assay dependent concentration.

Format

Purified polyclonal antibody supplied in PBS with 0.09% (W/V) sodium azide. This antibody is prepared by Saturated Ammonium Sulfate (SAS) precipitation followed by dialysis against PBS.

Storage

Maintain refrigerated at 2-8°C for up to 2 weeks. For long term storage store at -20°C in small aliquots to prevent freeze-thaw cycles.

Precautions

WDR1 Antibody (C-term) is for research use only and not for use in diagnostic or therapeutic procedures.

WDR1 Antibody (C-term) - Protein Information**Name** WDR1**Function** Induces disassembly of actin filaments in conjunction with ADF/cofilin family proteins

(PubMed:[15629458](#), PubMed:[27557945](#), PubMed:[29751004](#)). Enhances cofilin-mediated actin severing (By similarity). Involved in cytokinesis. Involved in chemotactic cell migration by restricting lamellipodial membrane protrusions (PubMed:[18494608](#)). Involved in myocardium sarcomere organization. Required for cardiomyocyte growth and maintenance (By similarity). Involved in megakaryocyte maturation and platelet shedding. Required for the establishment of planar cell polarity (PCP) during follicular epithelium development and for cell shape changes during PCP; the function seems to implicate cooperation with CFL1 and/or DSTN/ADF. Involved in the generation/maintenance of cortical tension (By similarity). Involved in assembly and maintenance of epithelial apical cell junctions and plays a role in the organization of the perijunctional actomyosin belt (PubMed:[25792565](#)).

Cellular Location

Cytoplasm. Cytoplasm, cytoskeleton {ECO:0000250|UniProtKB:Q5RKI0}. Cell projection, podosome. Cell junction

Tissue Location

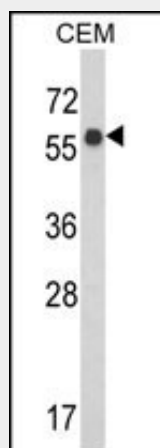
Expressed in peripheral blood mononuclear cells (at protein level).

WDR1 Antibody (C-term) - Protocols

Provided below are standard protocols that you may find useful for product applications.

- [Western Blot](#)
- [Blocking Peptides](#)
- [Dot Blot](#)
- [Immunohistochemistry](#)
- [Immunofluorescence](#)
- [Immunoprecipitation](#)
- [Flow Cytometry](#)
- [Cell Culture](#)

WDR1 Antibody (C-term) - Images



Western blot analysis of WDR1 Antibody (C-term) (Cat. #AP2919b) in CEM cell line lysates (35ug/lane). WDR1 (arrow) was detected using the purified Pab.

WDR1 Antibody (C-term) - Background

WDR1 is a protein containing 9 WD repeats. WD repeats are approximately 30- to 40-amino acid domains containing several conserved residues, mostly including a trp-asn at the C-terminal end.

WD domains are involved in protein-protein interactions. This protein may help induce the disassembly of actin filaments.

WDR1 Antibody (C-term) - References

McArdle, P.F., et.al., Arthritis Rheum. 58 (9), 2874-2881 (2008)