

**GSTO1 Antibody (Center)**  
**Purified Rabbit Polyclonal Antibody (Pab)**  
**Catalog # AP2930C****Specification**

---

**GSTO1 Antibody (Center) - Product Information**

Application	WB, FC, IHC-P,E
Primary Accession	<a href="#">P78417</a>
Reactivity	Human
Host	Rabbit
Clonality	Polyclonal
Isotype	Rabbit IgG
Calculated MW	27566
Antigen Region	126-155

**GSTO1 Antibody (Center) - Additional Information****Gene ID** 9446**Other Names**

Glutathione S-transferase omega-1, GSTO-1, Glutathione S-transferase omega 1-1, GSTO 1-1, Glutathione-dependent dehydroascorbate reductase, Monomethylarsonic acid reductase, MMA(V) reductase, S-(Phenacyl)glutathione reductase, SPG-R, GSTO1, GSTTLP28

**Target/Specificity**

This GSTO1 antibody is generated from rabbits immunized with a KLH conjugated synthetic peptide between 126-155 amino acids from the Central region of human GSTO1.

**Dilution**

WB~~1:1000  
FC~~1:10~50  
IHC-P~~1:50~100  
E~~Use at an assay dependent concentration.

**Format**

Purified polyclonal antibody supplied in PBS with 0.09% (W/V) sodium azide. This antibody is prepared by Saturated Ammonium Sulfate (SAS) precipitation followed by dialysis against PBS.

**Storage**

Maintain refrigerated at 2-8°C for up to 2 weeks. For long term storage store at -20°C in small aliquots to prevent freeze-thaw cycles.

**Precautions**

GSTO1 Antibody (Center) is for research use only and not for use in diagnostic or therapeutic procedures.

**GSTO1 Antibody (Center) - Protein Information**

**Name** GSTO1

**Synonyms** GSTTLP28

**Function** Exhibits glutathione-dependent thiol transferase and dehydroascorbate reductase activities. Has S-(phenacyl)glutathione reductase activity. Also has glutathione S-transferase activity. Participates in the biotransformation of inorganic arsenic and reduces monomethylarsonic acid (MMA) and dimethylarsonic acid.

**Cellular Location**

Cytoplasm, cytosol.

**Tissue Location**

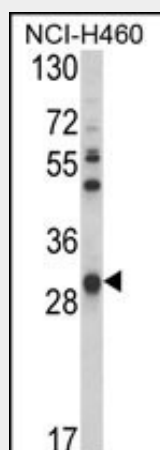
Ubiquitous. Highest expression in liver, pancreas, skeletal muscle, spleen, thymus, colon, blood leukocyte and heart. Lowest expression in brain, placenta and lung.

**GSTO1 Antibody (Center) - Protocols**

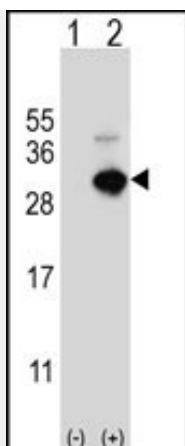
Provided below are standard protocols that you may find useful for product applications.

- [Western Blot](#)
- [Blocking Peptides](#)
- [Dot Blot](#)
- [Immunohistochemistry](#)
- [Immunofluorescence](#)
- [Immunoprecipitation](#)
- [Flow Cytometry](#)
- [Cell Culture](#)

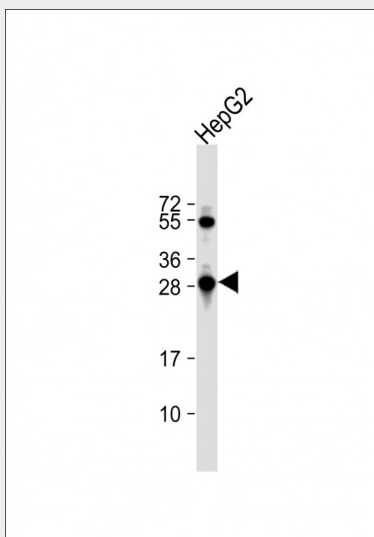
**GSTO1 Antibody (Center) - Images**



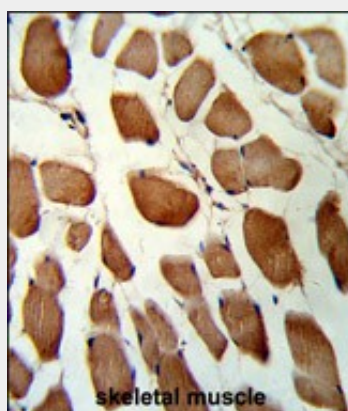
Western blot analysis of GSTO1 Antibody (Center) (Cat. #AP2930c) in NCI-H460 cell line lysates (35ug/lane). GSTO1 (arrow) was detected using the purified Pab.



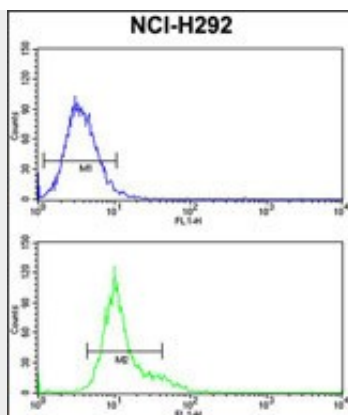
Western blot analysis of GSTO1 (arrow) using rabbit polyclonal GSTO1 Antibody (Center) (Cat. #AP2930c). 293 cell lysates (2 ug/lane) either nontransfected (Lane 1) or transiently transfected (Lane 2) with the GSTO1 gene.



Anti-GSTO1 Antibody (Center) at 1:1000 dilution + HepG2 whole cell lysate Lysates/proteins at 20 µg per lane. Secondary Goat Anti-Rabbit IgG, (H+L), Peroxidase conjugated at 1/10000 dilution. Predicted band size : 28 kDa Blocking/Dilution buffer: 5% NFDM/TBST.



Formalin-fixed and paraffin-embedded human skeletal muscle reacted with GSTO1 Antibody (Center), which was peroxidase-conjugated to the secondary antibody, followed by DAB staining. This data demonstrates the use of this antibody for immunohistochemistry; clinical relevance has not been evaluated.



GSTO1 Antibody (Center) (Cat. #AP2930c) flow cytometry analysis of NCI-H292 cells (bottom histogram) compared to a negative control cell (top histogram). FITC-conjugated goat-anti-rabbit secondary antibodies were used for the analysis.

#### **GSTO1 Antibody (Center) - Background**

GSTO1 is a member of the theta class glutathione S-transferase-like (GSTTL) protein family. In mouse, this protein acts as a small stress response protein, likely involved in cellular redox homeostasis.

#### **GSTO1 Antibody (Center) - References**

Wang, Y.H., et.al., Toxicol. Appl. Pharmacol. 241 (1), 111-118 (2009)