

PGLS Antibody (C-term)
Purified Rabbit Polyclonal Antibody (Pab)
Catalog # AP2935b**Specification**

PGLS Antibody (C-term) - Product Information

Application	WB, IHC-P, FC,E
Primary Accession	O95336
Other Accession	P85971
Reactivity	Human
Predicted	Rat
Host	Rabbit
Clonality	Polyclonal
Isotype	Rabbit IgG
Calculated MW	27547
Antigen Region	191-220

PGLS Antibody (C-term) - Additional Information**Gene ID** 25796**Other Names**

6-phosphogluconolactonase, 6PGL, PGLS

Target/Specificity

This PGLS antibody is generated from rabbits immunized with a KLH conjugated synthetic peptide between 191-220 amino acids from the C-terminal region of human PGLS.

Dilution

WB~~1:1000
IHC-P~~1:50~100
FC~~1:10~50

Format

Purified polyclonal antibody supplied in PBS with 0.09% (W/V) sodium azide. This antibody is prepared by Saturated Ammonium Sulfate (SAS) precipitation followed by dialysis against PBS.

Storage

Maintain refrigerated at 2-8°C for up to 2 weeks. For long term storage store at -20°C in small aliquots to prevent freeze-thaw cycles.

Precautions

PGLS Antibody (C-term) is for research use only and not for use in diagnostic or therapeutic procedures.

PGLS Antibody (C-term) - Protein Information**Name** PGLS ([HGNC:8903](#))

Function Hydrolysis of 6-phosphogluconolactone to 6-phosphogluconate.

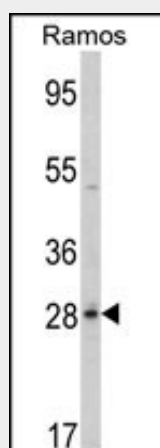
Cellular Location
Cytoplasm.

PGLS Antibody (C-term) - Protocols

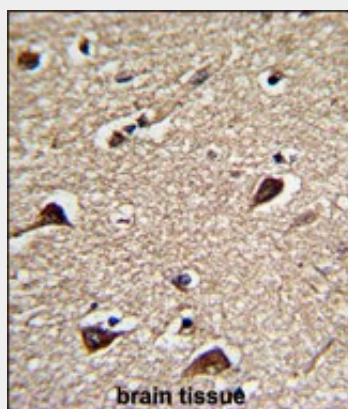
Provided below are standard protocols that you may find useful for product applications.

- [Western Blot](#)
- [Blocking Peptides](#)
- [Dot Blot](#)
- [Immunohistochemistry](#)
- [Immunofluorescence](#)
- [Immunoprecipitation](#)
- [Flow Cytometry](#)
- [Cell Culture](#)

PGLS Antibody (C-term) - Images

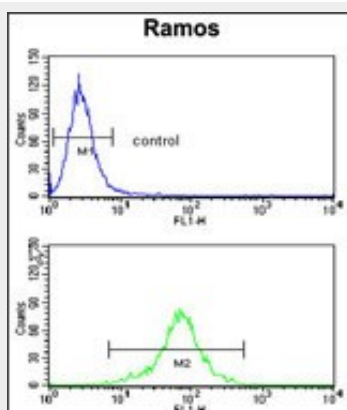


Western blot analysis of PGLS Antibody (C-term) (Cat. #AP2935b) in Ramos cell line lysates (35ug/lane). PGLS (arrow) was detected using the purified Pab.



Formalin-fixed and paraffin-embedded human brain tissue reacted with PGLS Antibody (C-term), which was peroxidase-conjugated to the secondary antibody, followed by DAB staining. This data demonstrates the use of this antibody for immunohistochemistry; clinical relevance has not been

evaluated.



PGLS Antibody (C-term) (Cat. #AP2935b) flow cytometry analysis of Ramos cells (bottom histogram) compared to a negative control cell (top histogram). FITC-conjugated goat-anti-rabbit secondary antibodies were used for the analysis.

PGLS Antibody (C-term) - Background

PGLS hydrolyzes 6-phosphogluconolactone to 6-phosphogluconate.

PGLS Antibody (C-term) - References

Miclet, E., et al., J. Biol. Chem. 276 (37), 34840-34846 (2001)