

PHGDH Antibody (Center)
Affinity Purified Rabbit Polyclonal Antibody (Pab)
Catalog # AP2936c

Specification

PHGDH Antibody (Center) - Product Information

Application	WB, FC, IHC-P,E
Primary Accession	O43175
Other Accession	O08651 , Q61753 , Q60HD7 , NP_006614
Reactivity	Human
Predicted	Monkey, Mouse, Rat
Host	Rabbit
Clonality	Polyclonal
Isotype	Rabbit IgG
Antigen Region	249-277

PHGDH Antibody (Center) - Additional Information

Gene ID 26227

Other Names

D-3-phosphoglycerate dehydrogenase, 3-PGDH, PHGDH, PGDH3

Target/Specificity

This PHGDH antibody is generated from rabbits immunized with a KLH conjugated synthetic peptide between 249-277 amino acids from the Central region of human PHGDH.

Dilution

WB~~1:1000
FC~~1:10~50
IHC-P~~1:50~100
E~~Use at an assay dependent concentration.

Format

Purified polyclonal antibody supplied in PBS with 0.09% (W/V) sodium azide. This antibody is purified through a protein A column, followed by peptide affinity purification.

Storage

Maintain refrigerated at 2-8°C for up to 2 weeks. For long term storage store at -20°C in small aliquots to prevent freeze-thaw cycles.

Precautions

PHGDH Antibody (Center) is for research use only and not for use in diagnostic or therapeutic procedures.

PHGDH Antibody (Center) - Protein Information

Name PHGDH

Synonyms PGDH3

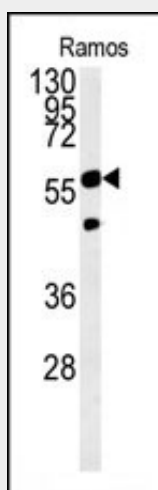
Function Catalyzes the reversible oxidation of 3-phospho-D-glycerate to 3-phosphonooxypyruvate, the first step of the phosphorylated L- serine biosynthesis pathway. Also catalyzes the reversible oxidation of 2-hydroxyglutarate to 2-oxoglutarate and the reversible oxidation of (S)-malate to oxaloacetate.

PHGDH Antibody (Center) - Protocols

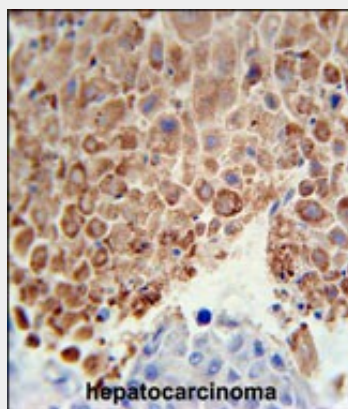
Provided below are standard protocols that you may find useful for product applications.

- [Western Blot](#)
- [Blocking Peptides](#)
- [Dot Blot](#)
- [Immunohistochemistry](#)
- [Immunofluorescence](#)
- [Immunoprecipitation](#)
- [Flow Cytometry](#)
- [Cell Culture](#)

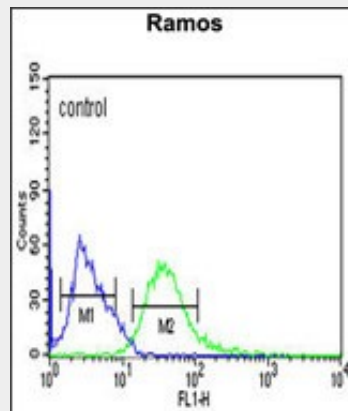
PHGDH Antibody (Center) - Images



PHGDH Antibody (Center) (Cat. #AP2936c) western blot analysis in Ramos cell line lysates (15ug/lane). This demonstrates the PHGDH antibody detected the PHGDH protein (arrow).



PHGDH Antibody (Center) (Cat. #AP2936c) immunohistochemistry analysis in formalin fixed and paraffin embedded human hepatocarcinoma followed by peroxidase conjugation of the secondary antibody and DAB staining. This data demonstrates the use of the PHGDH Antibody (Center) for immunohistochemistry. Clinical relevance has not been evaluated.



PHGDH Antibody (Center) (Cat. #AP2936c) flow cytometric analysis of Ramos cells (right histogram) compared to a negative control cell (left histogram). FITC-conjugated goat-anti-rabbit secondary antibodies were used for the analysis.

PHGDH Antibody (Center) - Background

3-Phosphoglycerate dehydrogenase (PHGDH; EC 1.1.1.95) catalyzes the transition of 3-phosphoglycerate into 3-phosphohydroxypyruvate, which is the first and rate-limiting step in the phosphorylated pathway of serine biosynthesis, using NAD⁺/NADH as a cofactor.

PHGDH Antibody (Center) - References

Du, H., et al. *Reproduction* 139(1):237-245(2010)
Burton, R.L., et al. *Biochemistry* 48(22):4808-4815(2009)
Kim, J.W., et al. *Psychiatr. Genet.* 19 (3), 161 (2009) :
Tabatabaie, L., et al. *Hum. Mutat.* 30(5):749-756(2009)

PHGDH Antibody (Center) - Citations

- [Quantitative proteomic analysis of the miR-148a-associated mechanisms of metastasis in non-small cell lung cancer.](#)
- [Systematic analysis of mRNA expression profiles in NSCLC cell lines to screen metastasis-related genes.](#)