

YWHAG Antibody (N-term)
Affinity Purified Rabbit Polyclonal Antibody (Pab)
Catalog # AP2943a

Specification

YWHAG Antibody (N-term) - Product Information

Application	WB, IHC-P, FC,E
Primary Accession	P61981 , P61982 , P61983
Other Accession	Q6NRY9 , Q6PCG0 , Q6PC29 , Q5F3W6 , P68252 , P61981 , P61982 , P61983
Reactivity	Human, Mouse, Rat
Predicted	Bovine, Chicken, Zebrafish, Xenopus
Host	Rabbit
Clonality	Polyclonal
Isotype	Rabbit IgG
Antigen Region	63-92

YWHAG Antibody (N-term) - Additional Information

Other Names

14-3-3 protein gamma, Protein kinase C inhibitor protein 1, KCIP-1, 14-3-3 protein gamma, N-terminally processed, YWHAG

Target/Specificity

This YWHAG antibody is generated from rabbits immunized with a KLH conjugated synthetic peptide between 63-92 amino acids from the N-terminal region of human YWHAG.

Dilution

WB~~1:1000
IHC-P~~1:10~50
FC~~1:10~50
E~~Use at an assay dependent concentration.

Format

Purified polyclonal antibody supplied in PBS with 0.09% (W/V) sodium azide. This antibody is purified through a protein A column, followed by peptide affinity purification.

Storage

Maintain refrigerated at 2-8°C for up to 2 weeks. For long term storage store at -20°C in small aliquots to prevent freeze-thaw cycles.

Precautions

YWHAG Antibody (N-term) is for research use only and not for use in diagnostic or therapeutic procedures.

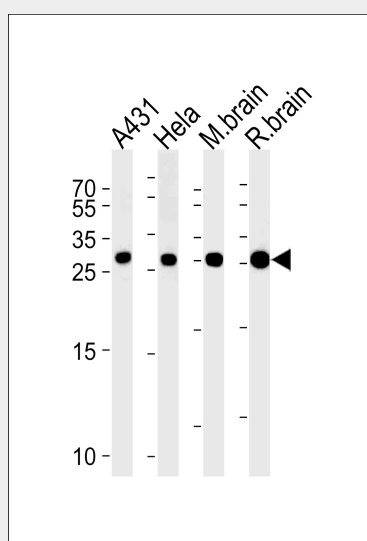
YWHAG Antibody (N-term) - Protein Information

YWHAG Antibody (N-term) - Protocols

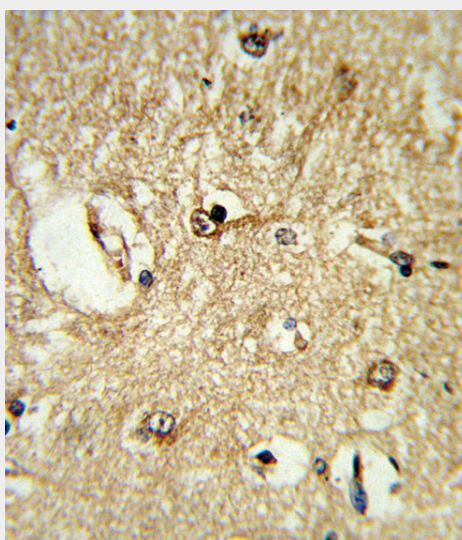
Provided below are standard protocols that you may find useful for product applications.

- [Western Blot](#)
- [Blocking Peptides](#)
- [Dot Blot](#)
- [Immunohistochemistry](#)
- [Immunofluorescence](#)
- [Immunoprecipitation](#)
- [Flow Cytometry](#)
- [Cell Culture](#)

YWHAG Antibody (N-term) - Images

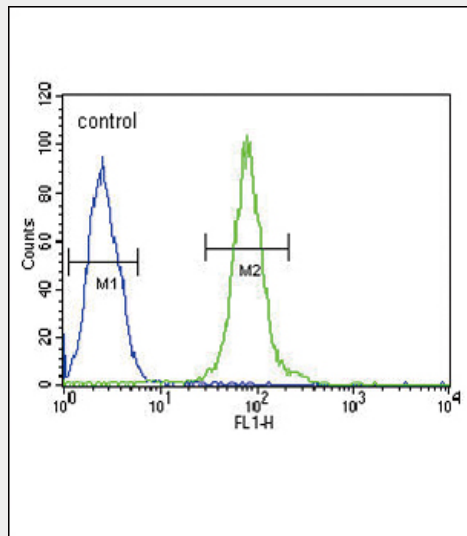


YWHAG Antibody (N-term) (Cat# AP2943a) western blot analysis in A431, HeLa cell line, mouse brain and rat brain lysates (35ug/lane). This demonstrates the YWHAG antibody detected the YWHAG protein (arrow).



Formalin-fixed and paraffin-embedded human brain tissue reacted with YWHAG Antibody (N-term), which was peroxidase-conjugated to the secondary antibody, followed by DAB staining.

This data demonstrates the use of this antibody for immunohistochemistry; clinical relevance has not been evaluated.



YWHAG Antibody (N-term) (Cat. #AP2943a) flow cytometric analysis of Hela cells (right histogram) compared to a negative control cell (left histogram). FITC-conjugated goat-anti-rabbit secondary antibodies were used for the analysis.

YWHAG Antibody (N-term) - Background

YWHAG belongs to the 14-3-3 family of proteins which mediate signal transduction by binding to phosphoserine-containing proteins. This highly conserved protein family is found in both plants and mammals, and this protein is 100% identical to the rat ortholog. It is induced by growth factors in human vascular smooth muscle cells, and is also highly expressed in skeletal and heart muscles, suggesting an important role for this protein in muscle tissue. It has been shown to interact with RAF1 and protein kinase C, proteins involved in various signal transduction pathways.

YWHAG Antibody (N-term) - References

Jagemann, L.R., et.al., J. Biol. Chem. 283 (25), 17450-17462 (2008)