

CD138 Antibody (C-term K281)
Purified Rabbit Polyclonal Antibody (Pab)
Catalog # AP2948b**Specification**

CD138 Antibody (C-term K281) - Product Information

Application	WB,E
Primary Accession	P18827
Other Accession	P26260 , P18828 , P47951 , Q08DZ5
Reactivity	Human
Predicted	Bovine, Hamster, Mouse, Rat
Host	Rabbit
Clonality	Polyclonal
Isotype	Rabbit IgG
Antigen Region	266-295

CD138 Antibody (C-term K281) - Additional Information**Gene ID** 6382**Other Names**

Syndecan-1, SYND1, CD138, SDC1, SDC

Target/Specificity

This CD138 antibody is generated from rabbits immunized with a KLH conjugated synthetic peptide between 266-295 amino acids from the C-terminal region of human CD138.

Dilution

WB~~1:1000

E~~Use at an assay dependent concentration.

Format

Purified polyclonal antibody supplied in PBS with 0.09% (W/V) sodium azide. This antibody is prepared by Saturated Ammonium Sulfate (SAS) precipitation followed by dialysis against PBS.

Storage

Maintain refrigerated at 2-8°C for up to 2 weeks. For long term storage store at -20°C in small aliquots to prevent freeze-thaw cycles.

Precautions

CD138 Antibody (C-term K281) is for research use only and not for use in diagnostic or therapeutic procedures.

CD138 Antibody (C-term K281) - Protein Information**Name** SDC1 ([HGNC:10658](#))**Synonyms** SDC

Function Cell surface proteoglycan that contains both heparan sulfate and chondroitin sulfate and that links the cytoskeleton to the interstitial matrix (By similarity). Regulates exosome biogenesis in concert with SDCBP and PDCD6IP (PubMed:[22660413](#)). Able to induce its own expression in dental mesenchymal cells and also in the neighboring dental epithelial cells via an MSX1-mediated pathway (By similarity).

Cellular Location

Membrane; Single-pass type I membrane protein. Secreted Secreted, extracellular exosome
Note=Shedding of the ectodomain produces a soluble form

Tissue Location

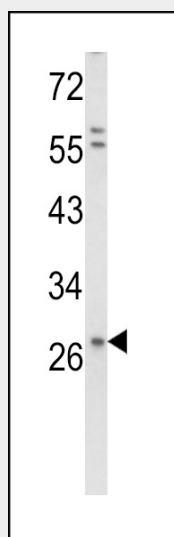
Detected in placenta (at protein level) (PubMed:32337544). Detected in fibroblasts (at protein level) (PubMed:36213313).

CD138 Antibody (C-term K281) - Protocols

Provided below are standard protocols that you may find useful for product applications.

- [Western Blot](#)
- [Blocking Peptides](#)
- [Dot Blot](#)
- [Immunohistochemistry](#)
- [Immunofluorescence](#)
- [Immunoprecipitation](#)
- [Flow Cytometry](#)
- [Cell Culture](#)

CD138 Antibody (C-term K281) - Images



Western blot analysis of CD138 Antibody (C-term K281) (Cat. #AP2948b) in HepG2 cell line lysates (35ug/lane). CD138 (arrow) was detected using the purified Pab.

CD138 Antibody (C-term K281) - Background

CD138 is a transmembrane (type I) heparan sulfate proteoglycan and is a member of the syndecan proteoglycan family. The syndecans mediate cell binding, cell signaling, and cytoskeletal organization and syndecan receptors are required for internalization of the HIV-1 tat protein. The

syndecan-1 protein functions as an integral membrane protein and participates in cell proliferation, cell migration and cell-matrix interactions via its receptor for extracellular matrix proteins.

CD138 Antibody (C-term K281) - References

Rikova,K., et.al., Cell 131 (6), 1190-1203 (2007)
Endo,K., et.al., J. Biol. Chem. 278 (42), 40764-40770 (2003)