

**Phospho-IL3R(Y766) Antibody**  
**Affinity Purified Rabbit Polyclonal Antibody (Pab)**  
**Catalog # AP3133a**

**Specification**

---

**Phospho-IL3R(Y766) Antibody - Product Information**

Application	WB, DB,E
Primary Accession	<a href="#">P32927</a>
Reactivity	Human
Host	Rabbit
Clonality	Polyclonal
Isotype	Rabbit IgG
Calculated MW	97336

**Phospho-IL3R(Y766) Antibody - Additional Information**

**Gene ID** 1439

**Other Names**

Cytokine receptor common subunit beta, CDw131, GM-CSF/IL-3/IL-5 receptor common beta subunit, CD131, CSF2RB, IL3RB, IL5RB

**Target/Specificity**

This IL3R Antibody is generated from rabbits immunized with a KLH conjugated synthetic phosphopeptide corresponding to amino acid residues surrounding Y766 of human IL3R.

**Dilution**

WB~~1:1000

DB~~1:500

E~~Use at an assay dependent concentration.

**Format**

Purified polyclonal antibody supplied in PBS with 0.09% (W/V) sodium azide. This antibody is purified through a protein A column, followed by peptide affinity purification.

**Storage**

Maintain refrigerated at 2-8°C for up to 2 weeks. For long term storage store at -20°C in small aliquots to prevent freeze-thaw cycles.

**Precautions**

Phospho-IL3R(Y766) Antibody is for research use only and not for use in diagnostic or therapeutic procedures.

**Phospho-IL3R(Y766) Antibody - Protein Information**

**Name** CSF2RB

**Synonyms** IL3RB, IL5RB

**Function** Cell surface receptor that plays a role in immune response and controls the production and differentiation of hematopoietic progenitor cells into lineage-restricted cells. Acts by forming an heterodimeric receptor through interaction with different partners such as IL3RA, IL5RA or CSF2RA (PubMed:[1495999](#)). In turn, participates in various signaling pathways including interleukin-3, interleukin-5 and granulocyte-macrophage colony-stimulating factor/CSF2 pathways. In unstimulated conditions, interacts constitutively with JAK1 and ligand binding leads to JAK1 stimulation and subsequent activation of the JAK- STAT pathway (PubMed:[9516124](#)).

#### **Cellular Location**

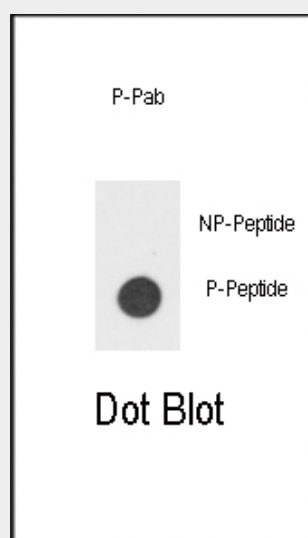
Membrane; Single-pass type I membrane protein.

### **Phospho-IL3R(Y766) Antibody - Protocols**

Provided below are standard protocols that you may find useful for product applications.

- [Western Blot](#)
- [Blocking Peptides](#)
- [Dot Blot](#)
- [Immunohistochemistry](#)
- [Immunofluorescence](#)
- [Immunoprecipitation](#)
- [Flow Cytometry](#)
- [Cell Culture](#)

### **Phospho-IL3R(Y766) Antibody - Images**



Dot blot analysis of anti-hIL3R-pY766 Phospho-specific Pab (Cat. #AP3133a) on nitrocellulose membrane. 50ng of Phospho-peptide or Non Phospho-peptide per dot were adsorbed. Antibody working concentrations are 0.5ug per ml.

### **Phospho-IL3R(Y766) Antibody - Background**

IL3R (also known as CSF2RB) is a common beta chain of the high affinity receptor for IL-3, IL-5 and GM-CSF. Defective IL3R has been reported to be associated with protein alveolar proteinosis (PAP). PAP is an autosomal recessive fatal respiratory disease.

### **Phospho-IL3R(Y766) Antibody - References**

Murphy, J.M., et al., J. Biol. Chem. 279(25):26500-26508 (2004).  
McClure, B.J., et al., Blood 101(4):1308-1315 (2003).  
Scibek, J.J., et al., Anal. Biochem. 307(2):258-265 (2002).  
Blake, T.J., et al., J. Leukoc. Biol. 72(6):1246-1255 (2002).  
Evans, C.A., et al., Blood 100(9):3164-3174 (2002).