

Phospho-RGS19(S24) Antibody
Affinity Purified Rabbit Polyclonal Antibody (Pab)
Catalog # AP3396a

Specification

Phospho-RGS19(S24) Antibody - Product Information

Application	DB,E
Primary Accession	P49795
Reactivity	Human
Host	Rabbit
Clonality	Polyclonal
Isotype	Rabbit IgG
Calculated MW	24636

Phospho-RGS19(S24) Antibody - Additional Information

Gene ID 10287

Other Names

Regulator of G-protein signaling 19, RGS19, G-alpha-interacting protein, GAIP, RGS19, GAIP, GNAI3IP

Target/Specificity

This RGS19 Antibody is generated from rabbits immunized with a KLH conjugated synthetic phosphopeptide corresponding to amino acid residues surrounding S24 of human RGS19.

Dilution

DB~~1:500

E~~Use at an assay dependent concentration.

Format

Purified polyclonal antibody supplied in PBS with 0.09% (W/V) sodium azide. This antibody is purified through a protein A column, followed by peptide affinity purification.

Storage

Maintain refrigerated at 2-8°C for up to 2 weeks. For long term storage store at -20°C in small aliquots to prevent freeze-thaw cycles.

Precautions

Phospho-RGS19(S24) Antibody is for research use only and not for use in diagnostic or therapeutic procedures.

Phospho-RGS19(S24) Antibody - Protein Information

Name RGS19

Synonyms GAIP, GNAI3IP

Function Inhibits signal transduction by increasing the GTPase activity of G protein alpha subunits thereby driving them into their inactive GDP-bound form. Binds to G-alpha subfamily 1 members, with the order G(i)a3 > G(i)a1 > G(o)a >> G(z)a/G(i)a2. Activity on G(z)-alpha is inhibited by phosphorylation and palmitoylation of the G-protein.

Cellular Location

Membrane; Lipid-anchor.

Tissue Location

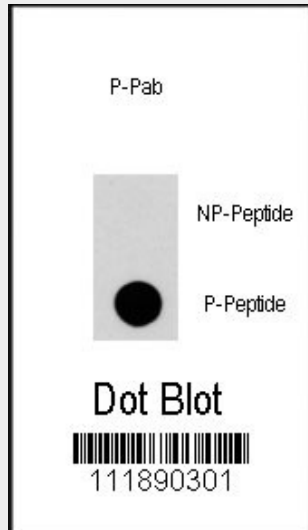
Highest expression in lung. Placenta, liver and heart also express high levels of GAIP

Phospho-RGS19(S24) Antibody - Protocols

Provided below are standard protocols that you may find useful for product applications.

- [Western Blot](#)
- [Blocking Peptides](#)
- [Dot Blot](#)
- [Immunohistochemistry](#)
- [Immunofluorescence](#)
- [Immunoprecipitation](#)
- [Flow Cytometry](#)
- [Cell Culture](#)

Phospho-RGS19(S24) Antibody - Images



Dot blot analysis of Phospho-RGS19-S24 Antibody (Cat.#AP3396a) on nitrocellulose membrane. 50ng of Phospho-peptide or Non Phospho-peptide per dot were adsorbed. Antibody working concentrations are 0.5ug per ml.

Phospho-RGS19(S24) Antibody - Background

Macroautophagy is the major inducible pathway for the general turnover of cytoplasmic constituents in eukaryotic cells, it is also responsible for the degradation of active cytoplasmic enzymes and organelles during nutrient starvation. Macroautophagy involves the formation of double-membrane bound autophagosomes which enclose the cytoplasmic constituent targeted for degradation in a membrane bound structure, which then fuse with the lysosome (or vacuole)

releasing a single-membrane bound autophagic bodies which are then degraded within the lysosome (or vacuole).

RGS19 enhances the intrinsic GTPase-activating protein activity of the Galphai3 protein, which stimulates autophagy by favoring the GDP-bound form of Galphai3.

Phospho-RGS19(S24) Antibody - References

- Baehrecke EH. Nat Rev Mol Cell Biol. 6(6):505-10. (2005)
Lum JJ, et al. Nat Rev Mol Cell Biol. 6(6):439-48. (2005)
Greenberg JT. Dev Cell. 8(6):799-801. (2005)
Levine B. Cell. 120(2):159-62. (2005)
Shintani T and Klionsky DJ. Science. 306(5698):990-5. (2004)
de Vries L., et al. PNAS 93:15203-15208(1996)
de Alba E., et al. J. Mol. Biol. 291:927-939(1999)
Wang J., et al. J. Biol. Chem. 273:26014-26025(1998)
Ogier-Denis E., et al. J. Biol. Chem. 275:39090-39095(2000)