

Phospho-EIF4EBP1(T36) Antibody
Affinity Purified Rabbit Polyclonal Antibody (Pab)
Catalog # AP3417a**Specification**

Phospho-EIF4EBP1(T36) Antibody - Product Information

Application	DB,E
Primary Accession	Q13541
Other Accession	Q62622 , Q60876 , Q0P5A7 , NP_004086
Reactivity	Human
Predicted	Bovine, Mouse, Rat
Host	Rabbit
Clonality	Polyclonal
Isotype	Rabbit IgG
Calculated MW	12580

Phospho-EIF4EBP1(T36) Antibody - Additional Information**Gene ID** 1978**Other Names**

Eukaryotic translation initiation factor 4E-binding protein 1, 4E-BP1, eIF4E-binding protein 1, Phosphorylated heat- and acid-stable protein regulated by insulin 1, PHAS-I, EIF4EBP1

Target/Specificity

This EIF4EBP1 Antibody is generated from rabbits immunized with a KLH conjugated synthetic phosphopeptide corresponding to amino acid residues surrounding T36 of human EIF4EBP1.

Dilution

DB~~1:500

E~~Use at an assay dependent concentration.

Format

Purified polyclonal antibody supplied in PBS with 0.09% (W/V) sodium azide. This antibody is purified through a protein A column, followed by peptide affinity purification.

Storage

Maintain refrigerated at 2-8°C for up to 2 weeks. For long term storage store at -20°C in small aliquots to prevent freeze-thaw cycles.

Precautions

Phospho-EIF4EBP1(T36) Antibody is for research use only and not for use in diagnostic or therapeutic procedures.

Phospho-EIF4EBP1(T36) Antibody - Protein Information**Name** EIF4EBP1

Function Repressor of translation initiation that regulates EIF4E activity by preventing its assembly into the eIF4F complex: hypophosphorylated form competes with EIF4G1/EIF4G3 and strongly binds to EIF4E, leading to repress translation. In contrast, hyperphosphorylated form dissociates from EIF4E, allowing interaction between EIF4G1/EIF4G3 and EIF4E, leading to initiation of translation. Mediates the regulation of protein translation by hormones, growth factors and other stimuli that signal through the MAP kinase and mTORC1 pathways.

Cellular Location

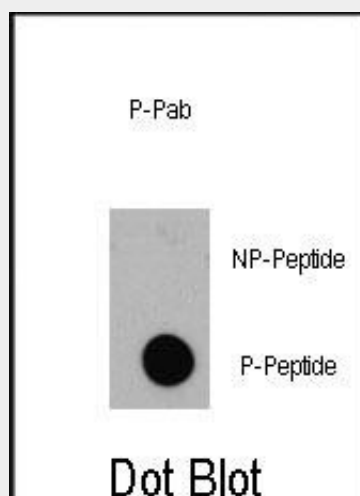
Cytoplasm. Nucleus. Note=Localization to the nucleus is unaffected by phosphorylation status. {ECO:0000250|UniProtKB:Q60876}

Phospho-EIF4EBP1(T36) Antibody - Protocols

Provided below are standard protocols that you may find useful for product applications.

- [Western Blot](#)
- [Blocking Peptides](#)
- [Dot Blot](#)
- [Immunohistochemistry](#)
- [Immunofluorescence](#)
- [Immunoprecipitation](#)
- [Flow Cytometry](#)
- [Cell Culture](#)

Phospho-EIF4EBP1(T36) Antibody - Images



Dot blot analysis of anti-EIF4EBP1-pT36 Phospho-specific Pab (Cat.#AP3416a) on nitrocellulose membrane. 50ng of Phospho-peptide or Non Phospho-peptide per dot were adsorbed. Antibody working concentrations are 0.5ug per ml.

Phospho-EIF4EBP1(T36) Antibody - Background

EIF4EBP1 is a member of a family of translation repressor proteins. This protein directly interacts with eukaryotic translation initiation factor 4E (eIF4E), which is a limiting component of the multisubunit complex that recruits 40S ribosomal subunits to the 5' end of mRNAs. Interaction of this protein with eIF4E inhibits complex assembly and represses translation. It is phosphorylated in response to various signals including UV irradiation and insulin signaling, resulting in its dissociation from eIF4E and activation of mRNA translation.

Phospho-EIF4EBP1(T36) Antibody - References

Fonseca,B.D., J. Biol. Chem. 282 (34), 24514-24524 (2007)
Armengol,G., Cancer Res. 67 (16), 7551-7555 (2007)