

Phospho-RASGRF1(S929) Antibody
Affinity Purified Rabbit Polyclonal Antibody (Pab)
Catalog # AP3496a

Specification

Phospho-RASGRF1(S929) Antibody - Product Information

Application	WB, DB,E
Primary Accession	Q13972
Reactivity	Human
Host	Rabbit
Clonality	Polyclonal
Isotype	Rabbit IgG
Calculated MW	145234

Phospho-RASGRF1(S929) Antibody - Additional Information

Gene ID 5923

Other Names

Ras-specific guanine nucleotide-releasing factor 1, Ras-GRF1, Guanine nucleotide-releasing protein, GNRP, Ras-specific nucleotide exchange factor CDC25, RASGRF1, CDC25, GNRP, GRF1

Target/Specificity

This RASGRF1 Antibody is generated from rabbits immunized with a KLH conjugated synthetic phosphopeptide corresponding to amino acid residues surrounding S929 of human RASGRF1.

Dilution

WB~~1:500

DB~~1:500

E~~Use at an assay dependent concentration.

Format

Purified polyclonal antibody supplied in PBS with 0.09% (W/V) sodium azide. This antibody is purified through a protein A column, followed by peptide affinity purification.

Storage

Maintain refrigerated at 2-8°C for up to 2 weeks. For long term storage store at -20°C in small aliquots to prevent freeze-thaw cycles.

Precautions

Phospho-RASGRF1(S929) Antibody is for research use only and not for use in diagnostic or therapeutic procedures.

Phospho-RASGRF1(S929) Antibody - Protein Information

Name RASGRF1

Synonyms CDC25, GNRP, GRF1

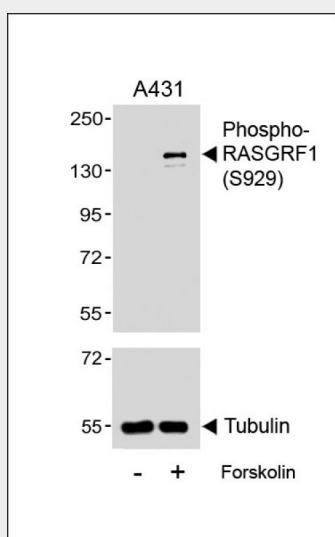
Function Promotes the exchange of Ras-bound GDP by GTP.

Phospho-RASGRF1(S929) Antibody - Protocols

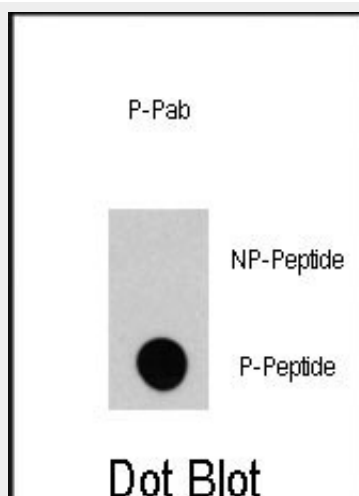
Provided below are standard protocols that you may find useful for product applications.

- [Western Blot](#)
- [Blocking Peptides](#)
- [Dot Blot](#)
- [Immunohistochemistry](#)
- [Immunofluorescence](#)
- [Immunoprecipitation](#)
- [Flow Cytometry](#)
- [Cell Culture](#)

Phospho-RASGRF1(S929) Antibody - Images



Western blot analysis of lysates from A431 cell line, untreated or treated with Forskolin(50μM, 30min), using Phospho-RASGRF1(S929) Antibody(upper) or Tubulin (lower).



Dot blot analysis of anti-RASGRF1-pS929 Pab (RB14017) on nitrocellulose membrane. 50ng of

Phospho-peptide or Non Phospho-peptide per dot were adsorbed. Antibody working concentrations are 0.5ug per ml.

Phospho-RASGRF1(S929) Antibody - Background

RASGRF1 is a guanine nucleotide exchange factor (GEF) similar to the *Saccharomyces cerevisiae* CDC25 gene product. Functional analysis has demonstrated that this protein stimulates the dissociation of GDP from RAS protein. Studies of the similar gene in mouse suggested that the Ras-GEF activity of this protein in brain can be activated by Ca²⁺ influx, muscarinic receptors, and G protein beta-gamma subunit. Mouse studies also indicated that the Ras-GEF signaling pathway mediated by this protein may be important for long-term memory.

Phospho-RASGRF1(S929) Antibody - References

Iguchi,T., Int. J. Oncol. 31 (2), 285-291 (2007)
Holmes,R., Mol. Cell. Biol. 26 (24), 9564-9570 (2006)