

Phospho-PRKRA(S246) Antibody
Affinity Purified Rabbit Polyclonal Antibody (Pab)
Catalog # AP3593a**Specification**

Phospho-PRKRA(S246) Antibody - Product Information

Application	DB,E
Primary Accession	O75569
Other Accession	O4V8C7 , O2HJ92
Reactivity	Human
Predicted	Bovine, Rat
Host	Rabbit
Clonality	Polyclonal
Isotype	Rabbit IgG
Calculated MW	34404

Phospho-PRKRA(S246) Antibody - Additional Information**Gene ID** 8575**Other Names**

Interferon-inducible double-stranded RNA-dependent protein kinase activator A, PKR-associated protein X, PKR-associating protein X, Protein activator of the interferon-induced protein kinase, Protein kinase, interferon-inducible double-stranded RNA-dependent activator, PRKRA, PACT, RAX

Target/Specificity

This PRKRA Antibody is generated from rabbits immunized with a KLH conjugated synthetic phosphopeptide corresponding to amino acid residues surrounding S246 of human PRKRA.

Dilution

DB~~1:500

E~~Use at an assay dependent concentration.

Format

Purified polyclonal antibody supplied in PBS with 0.09% (W/V) sodium azide. This antibody is purified through a protein A column, followed by peptide affinity purification.

Storage

Maintain refrigerated at 2-8°C for up to 2 weeks. For long term storage store at -20°C in small aliquots to prevent freeze-thaw cycles.

Precautions

Phospho-PRKRA(S246) Antibody is for research use only and not for use in diagnostic or therapeutic procedures.

Phospho-PRKRA(S246) Antibody - Protein Information**Name** PRKRA

Synonyms PACT, RAX

Function Activates EIF2AK2/PKR in the absence of double-stranded RNA (dsRNA), leading to phosphorylation of EIF2S1/EIF2-alpha and inhibition of translation and induction of apoptosis. Required for siRNA production by DICER1 and for subsequent siRNA-mediated post-transcriptional gene silencing. Does not seem to be required for processing of pre-miRNA to miRNA by DICER1. Promotes UBC9-p53/TP53 association and sumoylation and phosphorylation of p53/TP53 at 'Lys-386' at 'Ser-392' respectively and enhances its activity in a EIF2AK2/PKR-dependent manner (By similarity).

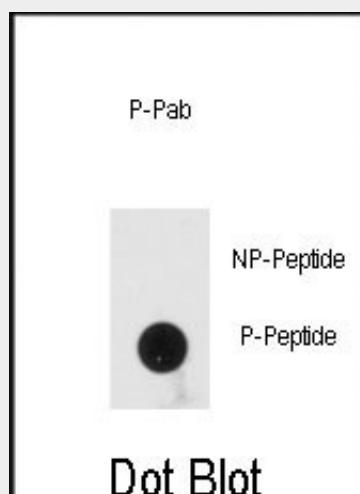
Cellular Location

Cytoplasm, perinuclear region. Cytoplasm.

Phospho-PRKRA(S246) Antibody - Protocols

Provided below are standard protocols that you may find useful for product applications.

- [Western Blot](#)
- [Blocking Peptides](#)
- [Dot Blot](#)
- [Immunohistochemistry](#)
- [Immunofluorescence](#)
- [Immunoprecipitation](#)
- [Flow Cytometry](#)
- [Cell Culture](#)

Phospho-PRKRA(S246) Antibody - Images

Dot blot analysis of anti-Phospho-PRKRA-pS246 Antibody (Cat.#AP3593a) on nitrocellulose membrane. 50ng of Phospho-peptide or Non Phospho-peptide per dot were adsorbed. Antibody working concentrations are 0.5ug per ml.

Phospho-PRKRA(S246) Antibody - Background

PRKRA appears to have a pro-apoptotic function that may be suppressed in the presence of growth factor. It activates EIF2AK2 in the absence of double-stranded RNA (dsRNA).

Phospho-PRKRA(S246) Antibody - References

Seibler,P., Lancet Neurol 7 (5), 380-381 (2008)
Kok,K.H., J. Biol. Chem. 282 (24), 17649-17657 (2007)
Patel,R.C., EMBO J. 17 (15), 4379-4390 (1998)