

Phospho-MEK1(S222) Antibody
Affinity Purified Rabbit Polyclonal Antibody (Pab)
Catalog # AP3612a**Specification**

Phospho-MEK1(S222) Antibody - Product Information

Application	WB, DB,E
Primary Accession	Q02750
Other Accession	P36506 , Q63932 , Q90891 , Q05116 , Q01986 , P29678 , P31938 , Q63980 , Q24324
Reactivity	Human
Predicted	Drosophila, Hamster, Mouse, Rabbit, Rat, Xenopus, Chicken
Host	Rabbit
Clonality	Polyclonal
Isotype	Rabbit IgG
Calculated MW	43439

Phospho-MEK1(S222) Antibody - Additional Information**Gene ID** 5604**Other Names**

Dual specificity mitogen-activated protein kinase kinase 1, MAP kinase kinase 1, MAPKK 1, MKK1, ERK activator kinase 1, MAPK/ERK kinase 1, MEK 1, MAP2K1, MEK1, PRKMK1

Target/Specificity

This MEK1 Antibody is generated from rabbits immunized with a KLH conjugated synthetic phosphopeptide corresponding to amino acid residues surrounding S222 of human MEK1.

Dilution

WB~~1:500

DB~~1:500

E~~Use at an assay dependent concentration.

Format

Purified polyclonal antibody supplied in PBS with 0.09% (W/V) sodium azide. This antibody is purified through a protein A column, followed by peptide affinity purification.

Storage

Maintain refrigerated at 2-8°C for up to 2 weeks. For long term storage store at -20°C in small aliquots to prevent freeze-thaw cycles.

Precautions

Phospho-MEK1(S222) Antibody is for research use only and not for use in diagnostic or therapeutic procedures.

Phospho-MEK1(S222) Antibody - Protein Information

Name MAP2K1 ([HGNC:6840](#))

Synonyms MEK1, PRKMK1

Function Dual specificity protein kinase which acts as an essential component of the MAP kinase signal transduction pathway. Binding of extracellular ligands such as growth factors, cytokines and hormones to their cell-surface receptors activates RAS and this initiates RAF1 activation. RAF1 then further activates the dual-specificity protein kinases MAP2K1/MEK1 and MAP2K2/MEK2. Both MAP2K1/MEK1 and MAP2K2/MEK2 function specifically in the MAPK/ERK cascade, and catalyze the concomitant phosphorylation of a threonine and a tyrosine residue in a Thr-Glu-Tyr sequence located in the extracellular signal-regulated kinases MAPK3/ERK1 and MAPK1/ERK2, leading to their activation and further transduction of the signal within the MAPK/ERK cascade. Activates BRAF in a KSR1 or KSR2-dependent manner; by binding to KSR1 or KSR2 releases the inhibitory intramolecular interaction between KSR1 or KSR2 protein kinase and N-terminal domains which promotes KSR1 or KSR2-BRAF dimerization and BRAF activation (PubMed:[29433126](#)). Depending on the cellular context, this pathway mediates diverse biological functions such as cell growth, adhesion, survival and differentiation, predominantly through the regulation of transcription, metabolism and cytoskeletal rearrangements. One target of the MAPK/ERK cascade is peroxisome proliferator-activated receptor gamma (PPARG), a nuclear receptor that promotes differentiation and apoptosis. MAP2K1/MEK1 has been shown to export PPARG from the nucleus. The MAPK/ERK cascade is also involved in the regulation of endosomal dynamics, including lysosome processing and endosome cycling through the perinuclear recycling compartment (PNRC), as well as in the fragmentation of the Golgi apparatus during mitosis.

Cellular Location

Cytoplasm, cytoskeleton, microtubule organizing center, centrosome. Cytoplasm, cytoskeleton, microtubule organizing center, spindle pole body. Cytoplasm. Nucleus Membrane; Peripheral membrane protein. Note=Localizes at centrosomes during prometaphase, midzone during anaphase and midbody during telophase/cytokinesis (PubMed:14737111). Membrane localization is probably regulated by its interaction with KSR1 (PubMed:10409742)

Tissue Location

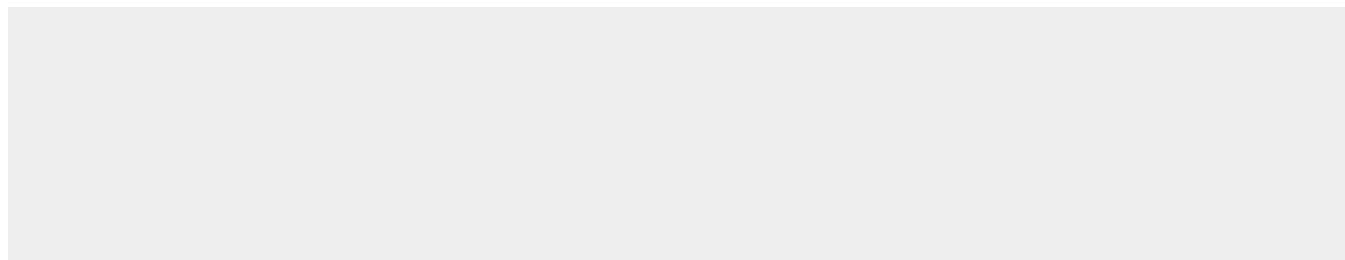
Widely expressed, with extremely low levels in brain.

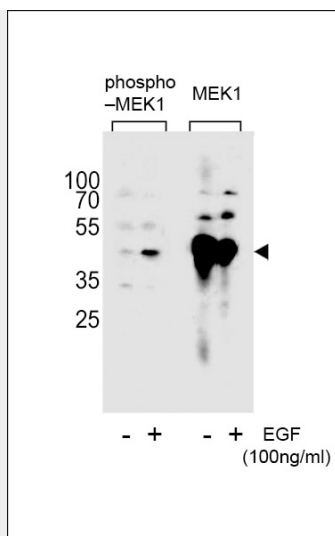
Phospho-MEK1(S222) Antibody - Protocols

Provided below are standard protocols that you may find useful for product applications.

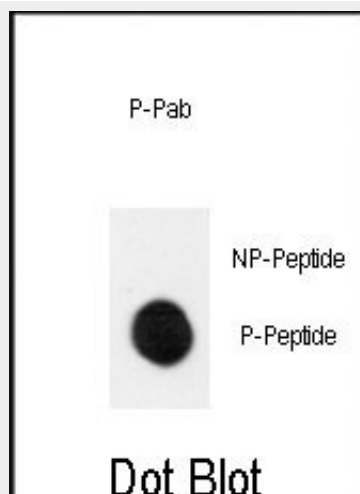
- [Western Blot](#)
- [Blocking Peptides](#)
- [Dot Blot](#)
- [Immunohistochemistry](#)
- [Immunofluorescence](#)
- [Immunoprecipitation](#)
- [Flow Cytometry](#)
- [Cell Culture](#)

Phospho-MEK1(S222) Antibody - Images





Western blot analysis of extracts from A431 cell, untreated or treated with EGF 100ng/ml, using Phospho-MEK1-pS222(left) or MEK1-pS222 antibody(right).



Dot blot analysis of anti-Phospho-MEK1-pS222 Antibody (Cat.#AP3612a) on nitrocellulose membrane. 50ng of Phospho-peptide or Non Phospho-peptide per dot were adsorbed. Antibody working concentrations are 0.5ug per ml.

Phospho-MEK1(S222) Antibody - Background

MEK1 is a dual specificity protein kinase that belongs to the MAP kinase kinase family. This kinase is known to play a critical role in mitogen growth factor signal transduction. It phosphorylates and thus activates MAPK1/ERK2 and MAPK2/ERK3. The activation of this kinase itself is dependent on the Ser/Thr phosphorylation by MAP kinase kinase kinases. The inhibition or degradation of this kinase is found to be involved in the pathogenesis of Yersinia and anthrax.

Phospho-MEK1(S222) Antibody - References

- Ohren, J.F., et al., J. Neural Transm. 11(12):1192-1197 (2004).
- Naegel, S., et al., J. Biol. Chem. 279(44):46023-46034 (2004).
- Ussar, S., et al., J. Biol. Chem. 279(42):43861-43869 (2004).
- Beausoleil, S.A., et al., Proc. Natl. Acad. Sci. U.S.A. 101(33):12130-12135 (2004).
- Spence, H.J., et al., EMBO Rep. 5(5):484-489 (2004).