

**Phospho-FABP4(Y20) Antibody**  
**Affinity Purified Rabbit Polyclonal Antibody (Pab)**  
**Catalog # AP3623a**

**Specification**

---

**Phospho-FABP4(Y20) Antibody - Product Information**

|                   |   |
|-------------------|---|
| Application       | DB,E  |
| Primary Accession | <a href="#">P15090</a>  |
| Other Accession   | <a href="#">P70623</a> , <a href="#">O97788</a> , <a href="#">P04117</a> , <a href="#">P48035</a> |
| Reactivity        | Human   |
| Predicted         | Bovine, Mouse, Pig, Rat   |
| Host              | Rabbit  |
| Clonality         | Polyclonal  |
| Isotype           | Rabbit IgG  |
| Calculated MW     | 14719   |

**Phospho-FABP4(Y20) Antibody - Additional Information**

**Gene ID** 2167

**Other Names**

Fatty acid-binding protein, adipocyte, Adipocyte lipid-binding protein, ALBP, Adipocyte-type fatty acid-binding protein, A-FABP, AFABP, Fatty acid-binding protein 4, FABP4

**Target/Specificity**

This FABP4 Antibody is generated from rabbits immunized with a KLH conjugated synthetic phosphopeptide corresponding to amino acid residues surrounding Y20 of human FABP4.

**Dilution**

DB~~1:500

E~~Use at an assay dependent concentration.

**Format**

Purified polyclonal antibody supplied in PBS with 0.09% (W/V) sodium azide. This antibody is purified through a protein A column, followed by peptide affinity purification.

**Storage**

Maintain refrigerated at 2-8°C for up to 2 weeks. For long term storage store at -20°C in small aliquots to prevent freeze-thaw cycles.

**Precautions**

Phospho-FABP4(Y20) Antibody is for research use only and not for use in diagnostic or therapeutic procedures.

**Phospho-FABP4(Y20) Antibody - Protein Information**

**Name** FABP4

**Function** Lipid transport protein in adipocytes. Binds both long chain fatty acids and retinoic acid. Delivers long-chain fatty acids and retinoic acid to their cognate receptors in the nucleus.

**Cellular Location**

Cytoplasm {ECO:0000250|UniProtKB:P04117}. Nucleus {ECO:0000250|UniProtKB:P04117}.

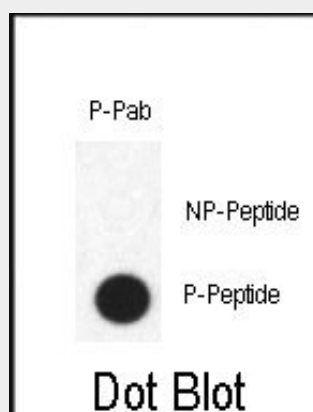
Note=Depending on the nature of the ligand, a conformation change exposes a nuclear localization motif and the protein is transported into the nucleus. Subject to constitutive nuclear export. {ECO:0000250|UniProtKB:P04117}

**Phospho-FABP4(Y20) Antibody - Protocols**

Provided below are standard protocols that you may find useful for product applications.

- [Western Blot](#)
- [Blocking Peptides](#)
- [Dot Blot](#)
- [Immunohistochemistry](#)
- [Immunofluorescence](#)
- [Immunoprecipitation](#)
- [Flow Cytometry](#)
- [Cell Culture](#)

**Phospho-FABP4(Y20) Antibody - Images**



Dot blot analysis of anti-Phospho-FABP4-pY20 Antibody (Cat.#AP3623a) on nitrocellulose membrane. 50ng of Phospho-peptide or Non Phospho-peptide per dot were adsorbed. Antibody working concentrations are 0.5ug per ml.

**Phospho-FABP4(Y20) Antibody - Background**

FABP4 is a fatty acid binding protein found in adipocytes. Fatty acid binding proteins are a family of small, highly conserved, cytoplasmic proteins that bind long-chain fatty acids and other hydrophobic ligands. It is thought that FABPs roles include fatty acid uptake, transport, and metabolism.

**Phospho-FABP4(Y20) Antibody - References**

Cabre,A., J. Lipid Res. 49 (8), 1746-1751 (2008)  
Fasshauer,M., Am. J. Hypertens. 21 (5), 582-586 (2008)  
Cabre,A., Clin. Chem. 54 (1), 181-187 (2008)