

Phospho-KLF4(S254) Antibody
Affinity Purified Rabbit Polyclonal Antibody (Pab)
Catalog # AP3652a

Specification

Phospho-KLF4(S254) Antibody - Product Information

Application	WB, IF, DB,E
Primary Accession	O43474
Other Accession	Q60793
Reactivity	Human
Predicted	Mouse
Host	Rabbit
Clonality	Polyclonal
Isotype	Rabbit IgG

Phospho-KLF4(S254) Antibody - Additional Information

Gene ID 9314

Other Names

Krueppel-like factor 4, Epithelial zinc finger protein EZF, Gut-enriched krueppel-like factor, KLF4, EZF, GKLF

Target/Specificity

This KLF4 Antibody is generated from rabbits immunized with a KLH conjugated synthetic phosphopeptide corresponding to amino acid residues surrounding S254 of human KLF4.

Dilution

WB~~1:1000

IF~~1:10~50

DB~~1:500

E~~Use at an assay dependent concentration.

Format

Purified polyclonal antibody supplied in PBS with 0.09% (W/V) sodium azide. This antibody is purified through a protein A column, followed by peptide affinity purification.

Storage

Maintain refrigerated at 2-8°C for up to 2 weeks. For long term storage store at -20°C in small aliquots to prevent freeze-thaw cycles.

Precautions

Phospho-KLF4(S254) Antibody is for research use only and not for use in diagnostic or therapeutic procedures.

Phospho-KLF4(S254) Antibody - Protein Information

Name KLF4 ([HGNC:6348](#))

Synonyms EZF, GKLf

Function Transcription factor; can act both as activator and as repressor. Binds the 5'-CACCC-3' core sequence. Binds to the promoter region of its own gene and can activate its own transcription. Regulates the expression of key transcription factors during embryonic development. Plays an important role in maintaining embryonic stem cells, and in preventing their differentiation. Required for establishing the barrier function of the skin and for postnatal maturation and maintenance of the ocular surface. Involved in the differentiation of epithelial cells and may also function in skeletal and kidney development. Contributes to the down-regulation of p53/TP53 transcription.

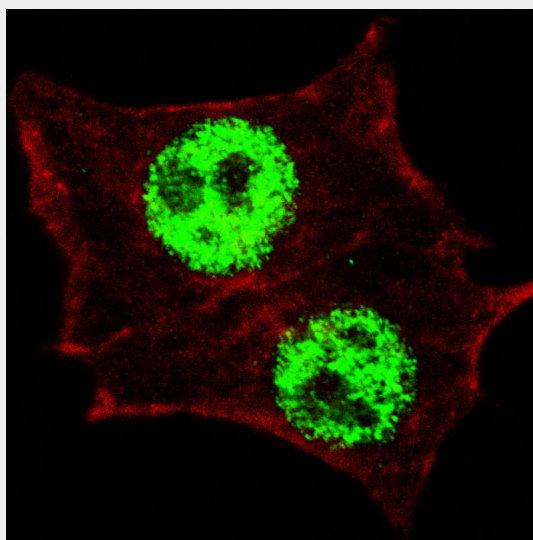
Cellular Location

Nucleus {ECO:0000250|UniProtKB:Q60793}. Cytoplasm {ECO:0000250|UniProtKB:Q60793}

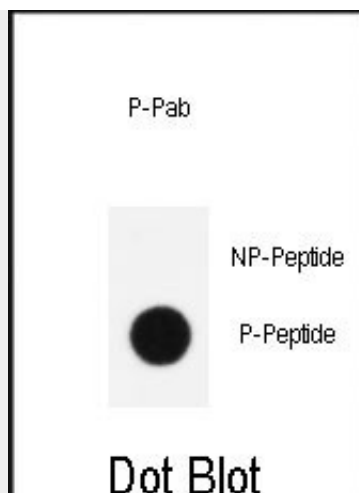
Phospho-KLF4(S254) Antibody - Protocols

Provided below are standard protocols that you may find useful for product applications.

- [Western Blot](#)
- [Blocking Peptides](#)
- [Dot Blot](#)
- [Immunohistochemistry](#)
- [Immunofluorescence](#)
- [Immunoprecipitation](#)
- [Flow Cytometry](#)
- [Cell Culture](#)

Phospho-KLF4(S254) Antibody - Images

Fluorescent confocal image of HeLa cells stained with AP3652a Phospho-KLF4-S254 antibody. HeLa cells were fixed with 4% PFA (20 min), permeabilized with Triton X-100 (0.2%, 30 min), then incubated with AP3652a Phospho-KLF4-S245 primary antibody (1:200, 2 h at room temperature). For secondary antibody, Alexa Fluor® 488 conjugated donkey anti-rabbit antibody (green) was used (1:1000, 1h). Cytoplasmic actin was counterstained with Alexa Fluor® 555 (red) conjugated Phalloidin (5.25 μ M, 25 min). Note the highly specific localization of the phosphorylated KLF4 immunoreactivity to the nuclei but not the nucleoli or the cytoplasm.



Dot blot analysis of anti-Phospho-KLF4-S254 Antibody (Cat. #AP3652a) on nitrocellulose membrane. 50ng of Phospho-peptide or Non Phospho-peptide per dot were adsorbed. Antibody working concentrations are 0.5ug per ml.

Phospho-KLF4(S254) Antibody - Background

Kr

Phospho-KLF4(S254) Antibody - References

Alder, J.K., J. Immunol. 180 (8), 5645-5652 (2008)
Natesampillai, S., Am. J. Physiol. Endocrinol. Metab. 294 (2), E385-E391 (2008)
Evans, P.M., J. Biol. Chem. 282 (47), 33994-34002 (2007)
Behr, R., Mol. Hum. Reprod. 13 (11), 815-820 (2007)

Phospho-KLF4(S254) Antibody - Citations

- [Airway Epithelial Repair by a Prebiotic Mannan Derived from *Saccharomyces cerevisiae*.](#)