

Phospho-TAL1(T90) Antibody
Purified Rabbit Polyclonal Antibody (Pab)
Catalog # AP3690a**Specification**

Phospho-TAL1(T90) Antibody - Product Information

Application	DB,E
Primary Accession	P17542
Reactivity	Human
Host	Rabbit
Clonality	Polyclonal
Isotype	Rabbit IgG
Calculated MW	34271

Phospho-TAL1(T90) Antibody - Additional Information**Gene ID** 6886**Other Names**

T-cell acute lymphocytic leukemia protein 1, TAL-1, Class A basic helix-loop-helix protein 17, bHLHa17, Stem cell protein, T-cell leukemia/lymphoma protein 5, TAL1, BHLHA17, SCL, TCL5

Target/Specificity

This TAL1 Antibody is generated from rabbits immunized with a KLH conjugated synthetic phosphopeptide corresponding to amino acid residues surrounding T90 of human TAL1.

Dilution

DB~~1:500

E~~Use at an assay dependent concentration.

Format

Purified polyclonal antibody supplied in PBS with 0.09% (W/V) sodium azide. This antibody is purified through a protein A column, followed by peptide affinity purification.

Storage

Maintain refrigerated at 2-8°C for up to 2 weeks. For long term storage store at -20°C in small aliquots to prevent freeze-thaw cycles.

Precautions

Phospho-TAL1(T90) Antibody is for research use only and not for use in diagnostic or therapeutic procedures.

Phospho-TAL1(T90) Antibody - Protein Information**Name** TAL1**Synonyms** BHLHA17, SCL, TCL5

Function Implicated in the genesis of hemopoietic malignancies. It may play an important role in hemopoietic differentiation. Serves as a positive regulator of erythroid differentiation (By similarity).

Cellular Location

Nucleus {ECO:0000255|PROSITE-ProRule:PRU00981}.

Tissue Location

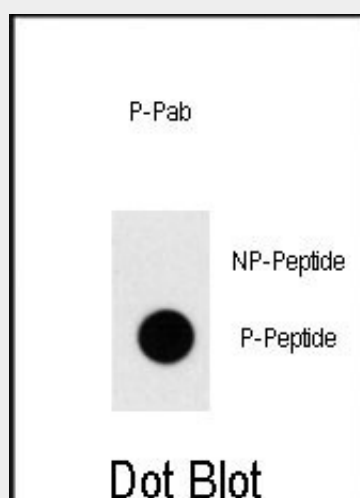
Leukemic stem cell.

Phospho-TAL1(T90) Antibody - Protocols

Provided below are standard protocols that you may find useful for product applications.

- [Western Blot](#)
- [Blocking Peptides](#)
- [Dot Blot](#)
- [Immunohistochemistry](#)
- [Immunofluorescence](#)
- [Immunoprecipitation](#)
- [Flow Cytometry](#)
- [Cell Culture](#)

Phospho-TAL1(T90) Antibody - Images



Dot blot analysis of anti-Phospho-TAL1-pT90 Pab (Cat. #AP3690a) on nitrocellulose membrane. 50ng of Phospho-peptide or Non Phospho-peptide per dot were adsorbed. Antibody working concentrations are 0.5ug per ml.

Phospho-TAL1(T90) Antibody - Background

TAL1 is implicated in the genesis of hemopoietic malignancies. It may play an important role in hemopoietic differentiation and serves as a positive regulator of erythroid differentiation.

Phospho-TAL1(T90) Antibody - References

Kassouf,M.T., Blood 112 (4), 1056-1067 (2008)
Terme,J.M., J. Virol. 82 (16), 7913-7922 (2008)
Brunet de la Grange,P., Stem Cells 26 (6), 1658-1662 (2008)