

Phospho-PDHE1A(S232) Antibody
Affinity Purified Rabbit Polyclonal Antibody (Pab)
Catalog # AP3758A**Specification**

Phospho-PDHE1A(S232) Antibody - Product Information

Application	WB, DB,E
Primary Accession	P08559
Other Accession	P26284 , P29804 , P35486 , Q8HXL9 , A7MB35 , NP_000275.1
Reactivity	Human
Predicted	Bovine, Monkey, Mouse, Pig, Rat
Host	Rabbit
Clonality	Polyclonal
Isotype	Rabbit IgG

Phospho-PDHE1A(S232) Antibody - Additional Information**Gene ID** 5160**Other Names**

Pyruvate dehydrogenase E1 component subunit alpha, somatic form, mitochondrial, PDHE1-A type I, PDHA1, PHE1A

Target/Specificity

This PDHE1A Antibody is generated from rabbits immunized with a KLH conjugated synthetic phosphopeptide corresponding to amino acid residues surrounding S232 of human PDHE1A.

Dilution

WB~~1:5000

DB~~1:500

E~~Use at an assay dependent concentration.

Format

Purified polyclonal antibody supplied in PBS with 0.09% (W/V) sodium azide. This antibody is purified through a protein A column, followed by peptide affinity purification.

Storage

Maintain refrigerated at 2-8°C for up to 2 weeks. For long term storage store at -20°C in small aliquots to prevent freeze-thaw cycles.

Precautions

Phospho-PDHE1A(S232) Antibody is for research use only and not for use in diagnostic or therapeutic procedures.

Phospho-PDHE1A(S232) Antibody - Protein Information**Name** PDHA1

Synonyms PHE1A

Function The pyruvate dehydrogenase complex catalyzes the overall conversion of pyruvate to acetyl-CoA and CO(2), and thereby links the glycolytic pathway to the tricarboxylic cycle.

Cellular Location

Mitochondrion matrix.

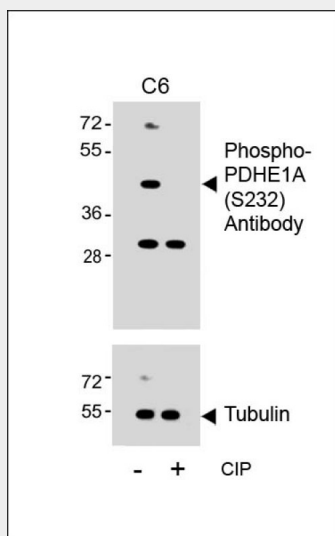
Tissue Location

Ubiquitous.

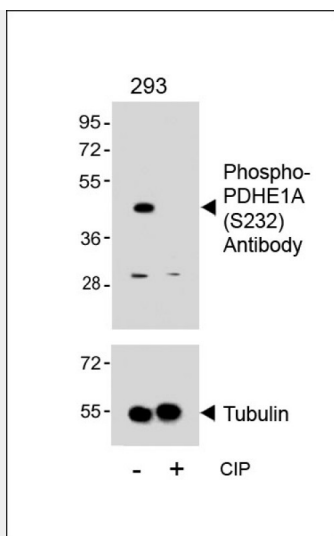
Phospho-PDHE1A(S232) Antibody - Protocols

Provided below are standard protocols that you may find useful for product applications.

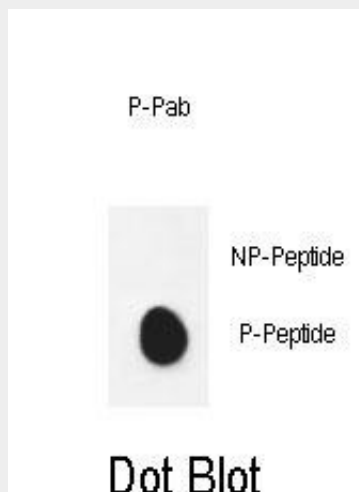
- [Western Blot](#)
- [Blocking Peptides](#)
- [Dot Blot](#)
- [Immunohistochemistry](#)
- [Immunofluorescence](#)
- [Immunoprecipitation](#)
- [Flow Cytometry](#)
- [Cell Culture](#)

Phospho-PDHE1A(S232) Antibody - Images

Western blot analysis of lysates from C6 cell line, untreated or treated with CIP, 100ng/ml, using Phospho-PDHE1A(S232) Antibody(upper) or Tubulin (lower).



Western blot analysis of lysates from 293 cell line, untreated or treated with CIP, 100ng/ml, using Phospho-PDHE1A(S232) Antibody(upper) or Tubulin (lower).



Dot blot analysis of anti-mPDHE1A-S232 Phospho-specific Pab (Cat. #AP3758a) on nitrocellulose membrane. 50ng of Phospho-peptide or Non Phospho-peptide per dot were adsorbed. Antibody working concentrations are 0.6ug per ml.

Phospho-PDHE1A(S232) Antibody - Citations

- [Energy sensor AMPK gamma regulates translation via phosphatase PPP6C independent of AMPK alpha](#)
- [PINK1 Is a Negative Regulator of Growth and the Warburg Effect in Glioblastoma](#)
- [JX06 Selectively Inhibits Pyruvate Dehydrogenase Kinase PDK1 by a Covalent Cysteine Modification](#)