

Acetyl-CALM1(K116) Antibody
Affinity Purified Rabbit Polyclonal Antibody (Pab)
Catalog # AP3807a**Specification**

Acetyl-CALM1(K116) Antibody - Product Information

Application	DB,E
Primary Accession	P62158
Other Accession	NP_001734.1
Reactivity	Human
Host	Rabbit
Clonality	Polyclonal
Isotype	Rabbit IgG
Antigen Region	95-121

Acetyl-CALM1(K116) Antibody - Additional Information**Other Names**

Calmodulin, CaM, CALM1, CALM, CAM, CAM1

Target/Specificity

This Acetyl antibody is generated from rabbits immunized with a KLH conjugated synthetic peptide between 95-121 amino acids from human Acetyl.

Dilution

DB~~1:500

Format

Purified polyclonal antibody supplied in PBS with 0.09% (W/V) sodium azide. This antibody is purified through a protein A column, followed by peptide affinity purification.

Storage

Maintain refrigerated at 2-8°C for up to 2 weeks. For long term storage store at -20°C in small aliquots to prevent freeze-thaw cycles.

Precautions

Acetyl-CALM1(K116) Antibody is for research use only and not for use in diagnostic or therapeutic procedures.

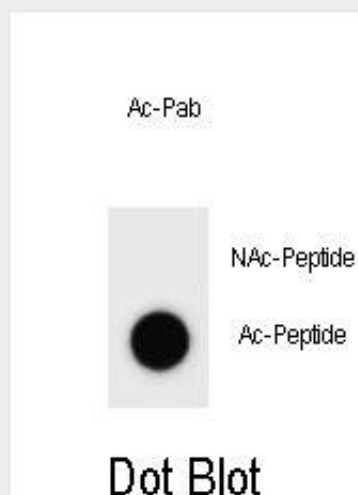
Acetyl-CALM1(K116) Antibody - Protein Information**Acetyl-CALM1(K116) Antibody - Protocols**

Provided below are standard protocols that you may find useful for product applications.

- [Western Blot](#)

- [Blocking Peptides](#)
- [Dot Blot](#)
- [Immunohistochemistry](#)
- [Immunofluorescence](#)
- [Immunoprecipitation](#)
- [Flow Cytometry](#)
- [Cell Culture](#)

Acetyl-CALM1(K116) Antibody - Images



Dot blot analysis of CALM1 Antibody (Acetyl K116) Acetyl-specific Pab (Cat. #AP3807a) on nitrocellulose membrane. 50ng of Acetyl-peptide or Non Acetyl-peptide per dot were adsorbed. Antibody working concentrations are 0.6ug per ml.

Acetyl-CALM1(K116) Antibody - Background

Calmodulin mediates the control of a large number of enzymes and other proteins by Ca^{2+} . Among the enzymes to be stimulated by the calmodulin- Ca^{2+} complex are a number of protein kinases and phosphatases. Together with CEP110 and centrin, is involved in a genetic pathway that regulates the centrosome cycle and progression through cytokinesis.

Acetyl-CALM1(K116) Antibody - References

Bailey, S.D., et al. Diabetes Care 33(10):2250-2253(2010)
Mototani, H., et al. J. Bone Miner. Metab. 28(5):547-553(2010)
Rose, J.E., et al. Mol. Med. 16 (7-8), 247-253 (2010) :
Liu, Y.J., et al. Obesity (Silver Spring) (2010) In press :
Benaim, G., et al. Eur. J. Biochem. 269(15):3619-3631(2002)