

Phospho-mouse TSC1(S387) Antibody
Affinity Purified Rabbit Polyclonal Antibody (Pab)
Catalog # AP3814a

Specification

Phospho-mouse TSC1(S387) Antibody - Product Information

Application	DB,E
Primary Accession	O9EP53
Other Accession	O9Z136 , NP_075025.2
Reactivity	Mouse
Predicted	Rat
Host	Rabbit
Clonality	Polyclonal
Isotype	Rabbit IgG
Calculated MW	128746

Phospho-mouse TSC1(S387) Antibody - Additional Information

Gene ID 64930

Other Names

Hamartin, Tuberous sclerosis 1 protein homolog, Tsc1, Kiaa0243

Target/Specificity

This mouse TSC1 Antibody is generated from rabbits immunized with a KLH conjugated synthetic phosphopeptide corresponding to amino acid residues surrounding S387 of mouse TSC1.

Dilution

DB~~1:500

E~~Use at an assay dependent concentration.

Format

Purified polyclonal antibody supplied in PBS with 0.09% (W/V) sodium azide. This antibody is purified through a protein A column, followed by peptide affinity purification.

Storage

Maintain refrigerated at 2-8°C for up to 2 weeks. For long term storage store at -20°C in small aliquots to prevent freeze-thaw cycles.

Precautions

Phospho-mouse TSC1(S387) Antibody is for research use only and not for use in diagnostic or therapeutic procedures.

Phospho-mouse TSC1(S387) Antibody - Protein Information

Name Tsc1 {ECO:0000303|PubMed:11130985, ECO:0000312|MGI:MGI:1929183}

Function Non-catalytic component of the TSC-TBC complex, a multiprotein complex that acts as a

negative regulator of the canonical mTORC1 complex, an evolutionarily conserved central nutrient sensor that stimulates anabolic reactions and macromolecule biosynthesis to promote cellular biomass generation and growth (PubMed:[12820960](#)). The TSC-TBC complex acts as a GTPase-activating protein (GAP) for the small GTPase RHEB, a direct activator of the protein kinase activity of mTORC1 (PubMed:[12820960](#)). In absence of nutrients, the TSC-TBC complex inhibits mTORC1, thereby preventing phosphorylation of ribosomal protein S6 kinase (RPS6KB1 and RPS6KB2) and EIF4EBP1 (4E-BP1) by the mTORC1 signaling (PubMed:[12820960](#)). The TSC-TBC complex is inactivated in response to nutrients, relieving inhibition of mTORC1 (By similarity). Within the TSC-TBC complex, TSC1 stabilizes TSC2 and prevents TSC2 self-aggregation (By similarity). Involved in microtubule-mediated protein transport via its ability to regulate mTORC1 signaling (PubMed:[16707451](#)). Also acts as a co-chaperone for HSP90AA1 facilitating HSP90AA1 chaperoning of protein clients such as kinases, TSC2 and glucocorticoid receptor NR3C1 (By similarity). Increases ATP binding to HSP90AA1 and inhibits HSP90AA1 ATPase activity (PubMed:[29127155](#)). Competes with the activating co-chaperone AHSA1 for binding to HSP90AA1, thereby providing a reciprocal regulatory mechanism for chaperoning of client proteins (By similarity). Recruits TSC2 to HSP90AA1 and stabilizes TSC2 by preventing the interaction between TSC2 and ubiquitin ligase HERC1 (By similarity).

Cellular Location

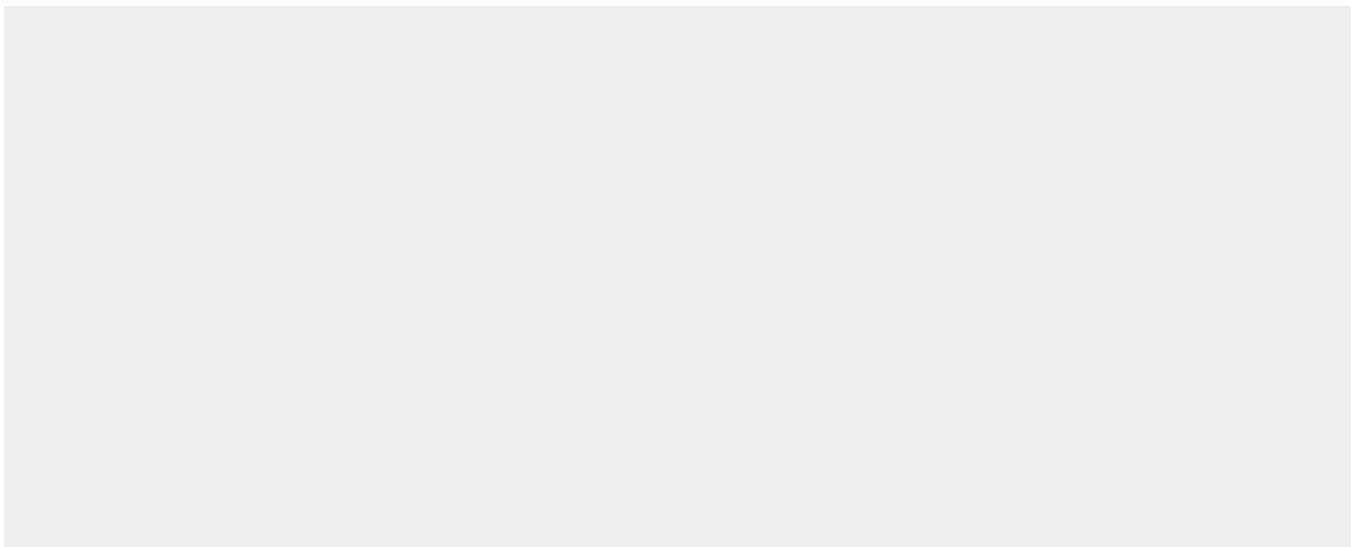
Lysosome membrane {ECO:0000250|UniProtKB:Q92574}; Peripheral membrane protein {ECO:0000250|UniProtKB:Q92574}. Cytoplasm, cytosol {ECO:0000250|UniProtKB:Q92574}. Note=Recruited to lysosomal membranes in a RHEB-dependent process in absence of nutrients. In response to nutrients, the complex dissociates from lysosomal membranes and relocates to the cytosol. {ECO:0000250|UniProtKB:Q92574}

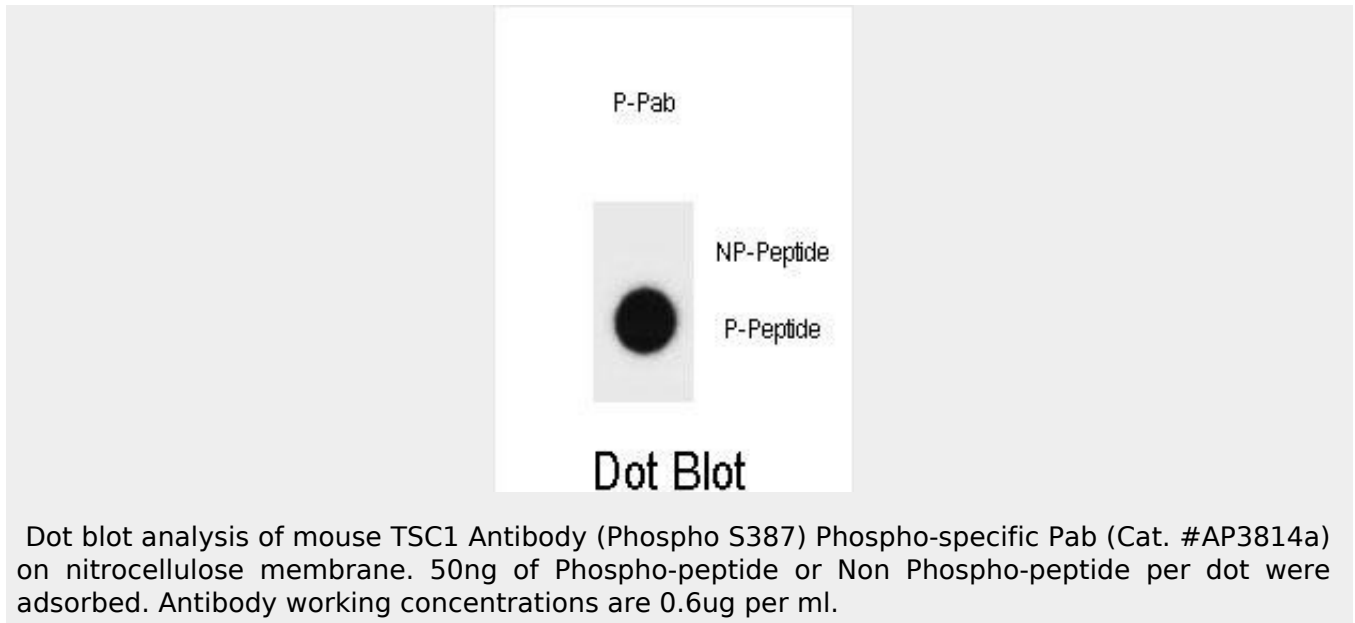
Phospho-mouse TSC1(S387) Antibody - Protocols

Provided below are standard protocols that you may find useful for product applications.

- [Western Blot](#)
- [Blocking Peptides](#)
- [Dot Blot](#)
- [Immunohistochemistry](#)
- [Immunofluorescence](#)
- [Immunoprecipitation](#)
- [Flow Cytometry](#)
- [Cell Culture](#)

Phospho-mouse TSC1(S387) Antibody - Images





Dot blot analysis of mouse TSC1 Antibody (Phospho S387) Phospho-specific Pab (Cat. #AP3814a) on nitrocellulose membrane. 50ng of Phospho-peptide or Non Phospho-peptide per dot were adsorbed. Antibody working concentrations are 0.6ug per ml.

Phospho-mouse TSC1(S387) Antibody - Background

In complex with TSC2, inhibits the nutrient-mediated or growth factor-stimulated phosphorylation of S6K1 and EIF4EBP1 by negatively regulating mTORC1 signaling (By similarity). Implicated as a tumor suppressor. Involved in microtubule-mediated protein transport, but this seems to be due to unregulated mTOR signaling (By similarity).

Phospho-mouse TSC1(S387) Antibody - References

Kladney, R.D., et al. Cancer Res. 70(21):8937-8947(2010)
Sathaliyawala, T., et al. Immunity 33(4):597-606(2010)
Scott, C.L., et al. Am. J. Physiol. Lung Cell Mol. Physiol. 299 (4), L455-L471 (2010) :
Bartolome, A., et al. Endocrinology 151(7):3084-3094(2010)
Squarize, C.H., et al. PLoS ONE 5 (5), E10643 (2010) :