

**Phospho-CCNB2(S22) Antibody**  
**Affinity Purified Rabbit Polyclonal Antibody (Pab)**  
**Catalog # AP3838a**

**Specification**

---

**Phospho-CCNB2(S22) Antibody - Product Information**

Application	DB,E
Primary Accession	<a href="#">O95067</a>
Other Accession	<a href="#">NP_004692.1</a>
Reactivity	Human
Host	Rabbit
Clonality	Polyclonal
Isotype	Rabbit IgG
Calculated MW	45282

**Phospho-CCNB2(S22) Antibody - Additional Information**

**Gene ID** 9133

**Other Names**

G2/mitotic-specific cyclin-B2, CCNB2

**Target/Specificity**

This CCNB2 Antibody is generated from rabbits immunized with a KLH conjugated synthetic phosphopeptide corresponding to amino acid residues surrounding S22 of human CCNB2.

**Dilution**

DB~~1:500

E~~Use at an assay dependent concentration.

**Format**

Purified polyclonal antibody supplied in PBS with 0.09% (W/V) sodium azide. This antibody is purified through a protein A column, followed by peptide affinity purification.

**Storage**

Maintain refrigerated at 2-8°C for up to 2 weeks. For long term storage store at -20°C in small aliquots to prevent freeze-thaw cycles.

**Precautions**

Phospho-CCNB2(S22) Antibody is for research use only and not for use in diagnostic or therapeutic procedures.

**Phospho-CCNB2(S22) Antibody - Protein Information**

**Name** CCNB2

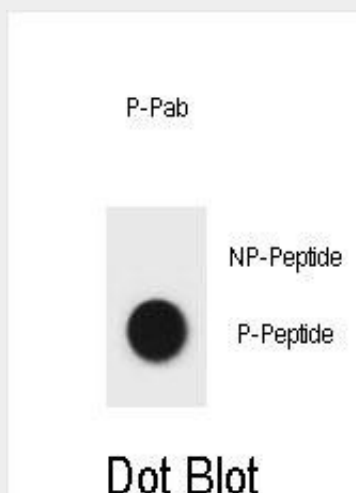
**Function** Essential for the control of the cell cycle at the G2/M (mitosis) transition.

## Phospho-CCNB2(S22) Antibody - Protocols

Provided below are standard protocols that you may find useful for product applications.

- [Western Blot](#)
- [Blocking Peptides](#)
- [Dot Blot](#)
- [Immunohistochemistry](#)
- [Immunofluorescence](#)
- [Immunoprecipitation](#)
- [Flow Cytometry](#)
- [Cell Culture](#)

## Phospho-CCNB2(S22) Antibody - Images



Dot blot analysis of CCNB2 Antibody (Phospho S22) Phospho-specific Pab (Cat. #AP3838a) on nitrocellulose membrane. 50ng of Phospho-peptide or Non Phospho-peptide per dot were adsorbed. Antibody working concentrations are 0.6ug per ml.

## Phospho-CCNB2(S22) Antibody - Background

Cyclin B2 is a member of the cyclin family, specifically the B-type cyclins. The B-type cyclins, B1 and B2, associate with p34cdc2 and are essential components of the cell cycle regulatory machinery. B1 and B2 differ in their subcellular localization. Cyclin B1 co-localizes with microtubules, whereas cyclin B2 is primarily associated with the Golgi region. Cyclin B2 also binds to transforming growth factor beta RII and thus cyclin B2/cdc2 may play a key role in transforming growth factor beta-mediated cell cycle control.

## Phospho-CCNB2(S22) Antibody - References

Cunningham, J.M., et al. Br. J. Cancer 101(8):1461-1468(2009)  
Haraguchi, T., et al. Fertil. Steril. 91 (4 SUPPL), 1424-1426 (2009) :  
De Martino, I., et al. Cancer Res. 69(5):1844-1850(2009)  
Bellanger, S., et al. Oncogene 26(51):7175-7184(2007)  
Stav, D., et al. Int. J. Biol. Markers 22(2):108-113(2007)