

**Phospho-CCNB1(S35) Antibody**  
**Affinity Purified Rabbit Polyclonal Antibody (Pab)**  
**Catalog # AP3882a**

**Specification**

---

**Phospho-CCNB1(S35) Antibody - Product Information**

Application	WB, DB,E
Primary Accession	<a href="#">P14635</a>
Other Accession	<a href="#">NP_114172.1</a>
Reactivity	Human
Host	Rabbit
Clonality	Polyclonal
Isotype	Rabbit IgG
Calculated MW	48337

**Phospho-CCNB1(S35) Antibody - Additional Information**

**Gene ID** 891

**Other Names**

G2/mitotic-specific cyclin-B1, CCNB1, CCNB

**Target/Specificity**

This CCNB1 Antibody is generated from rabbits immunized with a KLH conjugated synthetic phosphopeptide corresponding to amino acid residues surrounding S35 of human CCNB1.

**Dilution**

WB~~1:1100

DB~~1:500

E~~Use at an assay dependent concentration.

**Format**

Purified polyclonal antibody supplied in PBS with 0.09% (W/V) sodium azide. This antibody is purified through a protein A column, followed by peptide affinity purification.

**Storage**

Maintain refrigerated at 2-8°C for up to 2 weeks. For long term storage store at -20°C in small aliquots to prevent freeze-thaw cycles.

**Precautions**

Phospho-CCNB1(S35) Antibody is for research use only and not for use in diagnostic or therapeutic procedures.

**Phospho-CCNB1(S35) Antibody - Protein Information**

**Name** CCNB1

**Synonyms** CCNB

**Function** Essential for the control of the cell cycle at the G2/M (mitosis) transition.

**Cellular Location**

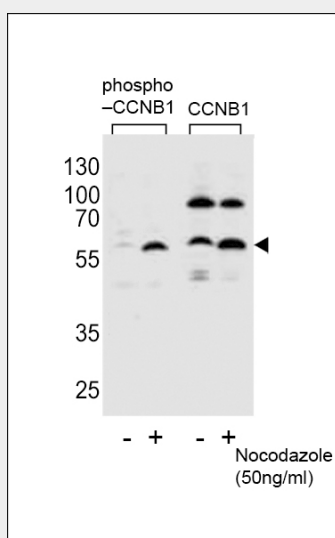
Cytoplasm. Nucleus. Cytoplasm, cytoskeleton, microtubule organizing center, centrosome

**Phospho-CCNB1(S35) Antibody - Protocols**

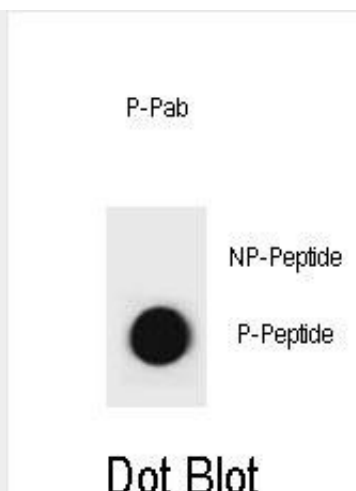
Provided below are standard protocols that you may find useful for product applications.

- [Western Blot](#)
- [Blocking Peptides](#)
- [Dot Blot](#)
- [Immunohistochemistry](#)
- [Immunofluorescence](#)
- [Immunoprecipitation](#)
- [Flow Cytometry](#)
- [Cell Culture](#)

**Phospho-CCNB1(S35) Antibody - Images**



Western blot analysis of lysate from HeLa cells (from left to right), untreated or treated with Nocodazole at 50ng/ml, using Phospho-CCNB1-S35 Antibody (Cat. #AP3882a) or CCNB1-S9 Antibody. Lysate at 15ug per lane. AP3882a was diluted at 1:1100 dilution at each lane. A goat anti-rabbit IgG H&L (HRP) at 1:5000 dilution was used as the secondary antibody.



Dot blot analysis of CCNB1 Antibody (Phospho S35) Phospho-specific Pab (Cat. #AP3882a) on nitrocellulose membrane. 50ng of Phospho-peptide or Non Phospho-peptide per dot were adsorbed. Antibody working concentrations are 0.6ug per ml.

### **Phospho-CCNB1(S35) Antibody - Background**

The protein encoded by this gene is a regulatory protein involved in mitosis. The gene product complexes with p34(cdc2) to form the maturation-promoting factor (MPF). Two alternative transcripts have been found, a constitutively expressed transcript and a cell cycle-regulated transcript, that is expressed predominantly during G2/M phase. The different transcripts result from the use of alternate transcription initiation sites. [provided by RefSeq].

### **Phospho-CCNB1(S35) Antibody - References**

Kreis, N.N., et al. Oncogene 29(41):5591-5603(2010)  
van Zon, W., et al. J. Cell Biol. 190(4):587-602(2010)  
Harley, M.E., et al. EMBO J. 29(14):2407-2420(2010)  
Olson, J.E., et al. Breast Cancer Res. Treat. (2010) In press :  
Nantajit, D., et al. PLoS ONE 5 (8), E12341 (2010) :