

**Phospho-SSH3 (Ser37) Antibody**  
**Purified Rabbit Polyclonal Antibody (Pab)**  
**Catalog # AP3923a****Specification**

---

**Phospho-SSH3 (Ser37) Antibody - Product Information**

Application	WB,E
Primary Accession	<a href="#">Q8TE77</a>
Reactivity	Human
Host	Rabbit
Clonality	polyclonal
Isotype	Rabbit IgG
Calculated MW	72996

**Phospho-SSH3 (Ser37) Antibody - Additional Information****Gene ID** 54961**Other Names**

Protein phosphatase Slingshot homolog 3, 3.1.3.16, 3.1.3.48, SSH-like protein 3, SSH-3L, hSSH-3L, SSH3, SSH3L

**Target/Specificity**

This Phospho-SSH3 (Ser37) antibody is generated from a rabbit immunized with a KLH conjugated synthetic peptide between 10-43 amino acids from human SSH3.

**Dilution**

WB~~1:500

E~~Use at an assay dependent concentration.

**Format**

Purified polyclonal antibody supplied in PBS with 0.09% (W/V) sodium azide. This antibody is purified through a protein A column, followed by peptide affinity purification.

**Storage**

Maintain refrigerated at 2-8°C for up to 2 weeks. For long term storage store at -20°C in small aliquots to prevent freeze-thaw cycles.

**Precautions**

Phospho-SSH3 (Ser37) Antibody is for research use only and not for use in diagnostic or therapeutic procedures.

**Phospho-SSH3 (Ser37) Antibody - Protein Information****Name** SSH3**Synonyms** SSH3L

**Function** Protein phosphatase which may play a role in the regulation of actin filament dynamics. Can dephosphorylate and activate the actin binding/depolymerizing factor cofilin, which subsequently binds to actin filaments and stimulates their disassembly (By similarity).

**Cellular Location**

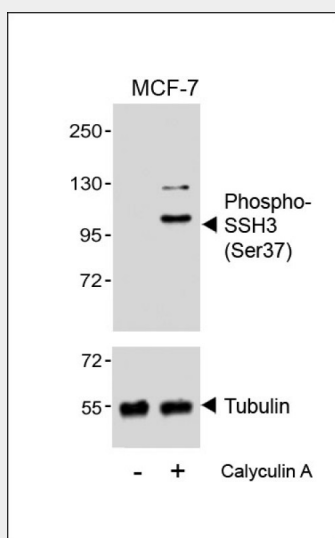
Cytoplasm, cytoskeleton. Nucleus

**Phospho-SSH3 (Ser37) Antibody - Protocols**

Provided below are standard protocols that you may find useful for product applications.

- [Western Blot](#)
- [Blocking Peptides](#)
- [Dot Blot](#)
- [Immunohistochemistry](#)
- [Immunofluorescence](#)
- [Immunoprecipitation](#)
- [Flow Cytometry](#)
- [Cell Culture](#)

**Phospho-SSH3 (Ser37) Antibody - Images**



Western blot analysis of lysates from MCF-7 cell line, untreated or treated with Calyculin A, 100nM, using (Cat. #AP3923a)(upper) or Tubulin (lower).

**Phospho-SSH3 (Ser37) Antibody - Background**

Protein phosphatase which may play a role in the regulation of actin filament dynamics. Can dephosphorylate and activate the actin binding/depolymerizing factor cofilin, which subsequently binds to actin filaments and stimulates their disassembly (By similarity).

**Phospho-SSH3 (Ser37) Antibody - References**

- Niwa R.,et al.Cell 108:233-246(2002).  
Ohta Y.,et al.Genes Cells 8:811-824(2003).  
Ota T.,et al.Nat. Genet. 36:40-45(2004).  
Matsuoka S.,et al.Science 316:1160-1166(2007).

Daub H., et al. Mol. Cell 31:438-448(2008).