

ATL3 Antibody (Center)
Affinity Purified Rabbit Polyclonal Antibody (Pab)
Catalog # AP4715c**Specification**

ATL3 Antibody (Center) - Product Information

Application	WB,E
Primary Accession	Q6DD88
Other Accession	Q0ZHH6
Reactivity	Human, Hamster, Mouse
Predicted	Rat
Host	Rabbit
Clonality	Polyclonal
Isotype	Rabbit IgG
Calculated MW	60542
Antigen Region	217-245

ATL3 Antibody (Center) - Additional Information**Gene ID** 25923**Other Names**

Atlastin-3, 365-, ATL3

Target/Specificity

This ATL3 antibody is generated from rabbits immunized with a KLH conjugated synthetic peptide between 217-245 amino acids from the Central region of human ATL3.

Dilution

WB~~1:1000

Format

Purified polyclonal antibody supplied in PBS with 0.09% (W/V) sodium azide. This antibody is purified through a protein A column, followed by peptide affinity purification.

Storage

Maintain refrigerated at 2-8°C for up to 2 weeks. For long term storage store at -20°C in small aliquots to prevent freeze-thaw cycles.

Precautions

ATL3 Antibody (Center) is for research use only and not for use in diagnostic or therapeutic procedures.

ATL3 Antibody (Center) - Protein Information**Name** ATL3**Function** GTPase tethering membranes through formation of trans- homooligomers and mediating

homotypic fusion of endoplasmic reticulum membranes. Functions in endoplasmic reticulum tubular network biogenesis (PubMed:[18270207](#), PubMed:[19665976](#), PubMed:[27619977](#)).

Cellular Location

Endoplasmic reticulum membrane; Multi-pass membrane protein Note=Localizes to endoplasmic reticulum tubules and accumulates in punctuate structures corresponding to 3-way junctions, which represent crossing-points at which the tubules build a polygonal network

Tissue Location

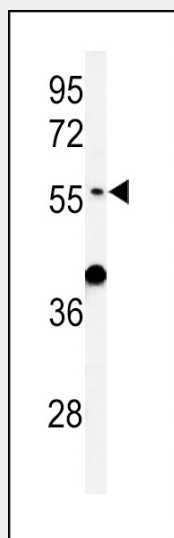
Expressed in the central nervous system and in dorsal root ganglia neurons. Expressed in peripheral tissues (at protein level).

ATL3 Antibody (Center) - Protocols

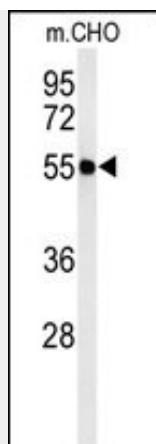
Provided below are standard protocols that you may find useful for product applications.

- [Western Blot](#)
- [Blocking Peptides](#)
- [Dot Blot](#)
- [Immunohistochemistry](#)
- [Immunofluorescence](#)
- [Immunoprecipitation](#)
- [Flow Cytometry](#)
- [Cell Culture](#)

ATL3 Antibody (Center) - Images



Western blot analysis of ATL3 Antibody (Center) (Cat. #AP4715c) in mouse liver tissue lysates (35ug/lane). ATL3 (arrow) was detected using the purified Pab.



Western blot analysis of ATL3 Antibody (Center) (Cat. #AP4715c) in CHO cell line lysates (35ug/lane). ATL3 (arrow) was detected using the purified Pab.

ATL3 Antibody (Center) - Background

ATL3 is GTPase tethering membranes through formation of trans-homooligomer and mediating homotypic fusion of endoplasmic reticulum membranes. ATL3 is function in endoplasmic reticulum tubular network biogenesis.

ATL3 Antibody (Center) - References

Hu, J., et al. Cell 138(3):549-561(2009)
Rismanchi, N., et al. Hum. Mol. Genet. 17(11):1591-1604(2008)