

PAQR3 Antibody (C-term)
Affinity Purified Rabbit Polyclonal Antibody (Pab)
Catalog # AP4717b

Specification

PAQR3 Antibody (C-term) - Product Information

Application	WB,E
Primary Accession	Q6TCH7
Other Accession	Q6TCG8
Reactivity	Human
Predicted	Mouse
Host	Rabbit
Clonality	Polyclonal
Isotype	Rabbit IgG
Calculated MW	36217
Antigen Region	242-270

PAQR3 Antibody (C-term) - Additional Information

Gene ID 152559

Other Names

Progesterin and adipoQ receptor family member 3, Progesterin and adipoQ receptor family member III, Raf kinase trapping to Golgi, RKTG, PAQR3

Target/Specificity

This PAQR3 antibody is generated from rabbits immunized with a KLH conjugated synthetic peptide between 242-270 amino acids from the C-terminal region of human PAQR3.

Dilution

WB~~1:1000

Format

Purified polyclonal antibody supplied in PBS with 0.09% (W/V) sodium azide. This antibody is purified through a protein A column, followed by peptide affinity purification.

Storage

Maintain refrigerated at 2-8°C for up to 2 weeks. For long term storage store at -20°C in small aliquots to prevent freeze-thaw cycles.

Precautions

PAQR3 Antibody (C-term) is for research use only and not for use in diagnostic or therapeutic procedures.

PAQR3 Antibody (C-term) - Protein Information

Name PAQR3 ([HGNC:30130](#))

Function Golgi-scaffold protein which modulates its interactors activities by anchoring them to the Golgi apparatus (PubMed:[18547165](#), PubMed:[26311497](#)). Functions as a spatial regulator of RAF1 kinase by sequestering it to the Golgi apparatus (PubMed:[18547165](#)). Acts as a positive regulator of cholesterol biosynthesis by mediating the anchoring of the SCAP:SREBP complex in the Golgi apparatus, thereby promoting SCAP:SREBF2 complex formation, potentiating SREBF2 and SREBF1 processing and enhancing lipid synthesis (PubMed:[26311497](#)). Also regulates PPARA and PPARG functions by mediating their interaction with E3 ubiquitin ligases, such as STUB1 or HUWE1, leading to their polyubiquitination and proteasome-mediated degradation (By similarity).

Cellular Location

Golgi apparatus membrane; Multi-pass membrane protein

Tissue Location

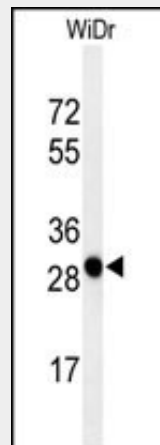
Widely expressed in a range of tissues.

PAQR3 Antibody (C-term) - Protocols

Provided below are standard protocols that you may find useful for product applications.

- [Western Blot](#)
- [Blocking Peptides](#)
- [Dot Blot](#)
- [Immunohistochemistry](#)
- [Immunofluorescence](#)
- [Immunoprecipitation](#)
- [Flow Cytometry](#)
- [Cell Culture](#)

PAQR3 Antibody (C-term) - Images



Western blot analysis of PAQR3 Antibody (C-term) (Cat. #AP4717b) in WiDr cell line lysates (35ug/lane). PAQR3 (arrow) was detected using the purified Pab.

PAQR3 Antibody (C-term) - Background

PAQR3 is function as a spatial regulator of RAF1 kinase by sequestering it to the Golgi.

PAQR3 Antibody (C-term) - References

Jiang, Y., et al. Mol. Cell. Biol. 30(1):78-90(2010)

Garitaonandia, I., et al. J. Recept. Signal Transduct. Res. 29(1):67-73(2009)

Luo, X., et al. Biochem. J. 414(3):399-406(2008)

PAQR3 Antibody (C-term) - Citations

- [Expression of adipokines in osteoarthritis osteophytes and their effect on osteoblasts.](#)