

CC130 Antibody (Center)
Affinity Purified Rabbit Polyclonal Antibody (Pab)
Catalog # AP4737c**Specification**

CC130 Antibody (Center) - Product Information

Application	WB, IHC-P, FC,E
Primary Accession	P13994
Reactivity	Human
Host	Rabbit
Clonality	Polyclonal
Isotype	Rabbit IgG
Calculated MW	44802
Antigen Region	173-200

CC130 Antibody (Center) - Additional Information**Gene ID** 81576**Other Names**

Coiled-coil domain-containing protein 130, 9 kDa protein, CCDC130

Target/Specificity

This CC130 antibody is generated from rabbits immunized with a KLH conjugated synthetic peptide between 173-200 amino acids from the Central region of human CC130.

Dilution

WB~~1:1000
IHC-P~~1:50~100
FC~~1:10~50

Format

Purified polyclonal antibody supplied in PBS with 0.09% (W/V) sodium azide. This antibody is purified through a protein A column, followed by peptide affinity purification.

Storage

Maintain refrigerated at 2-8°C for up to 2 weeks. For long term storage store at -20°C in small aliquots to prevent freeze-thaw cycles.

Precautions

CC130 Antibody (Center) is for research use only and not for use in diagnostic or therapeutic procedures.

CC130 Antibody (Center) - Protein Information**Name** YJU2B ([HGNC:28118](#))**Function** May be involved in mRNA splicing.

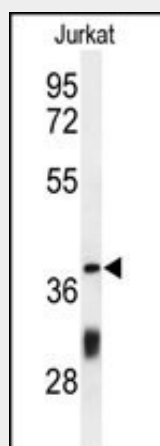
Cellular Location

Nucleus {ECO:0000250|UniProtKB:Q9BW85}.

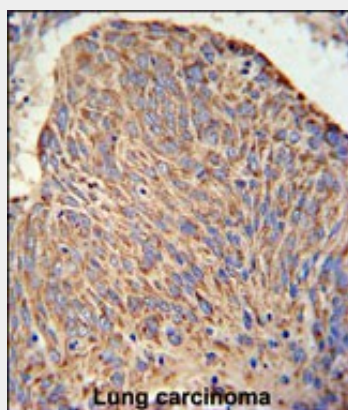
CC130 Antibody (Center) - Protocols

Provided below are standard protocols that you may find useful for product applications.

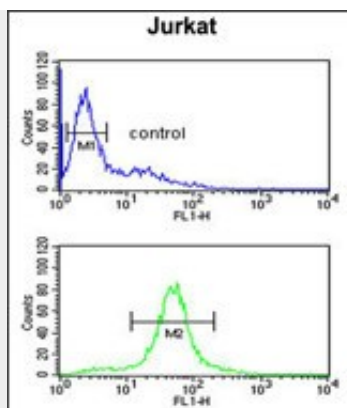
- [Western Blot](#)
- [Blocking Peptides](#)
- [Dot Blot](#)
- [Immunohistochemistry](#)
- [Immunofluorescence](#)
- [Immunoprecipitation](#)
- [Flow Cytometry](#)
- [Cell Culture](#)

CC130 Antibody (Center) - Images

Western blot analysis of CC130 Antibody (Center) (Cat. #AP4737c) in Jurkat cell line lysates (35ug/lane). CC130 (arrow) was detected using the purified Pab.



CC130 Antibody (Center) (Cat. #AP4737c) IHC analysis in formalin fixed and paraffin embedded human lung carcinoma followed by peroxidase conjugation of the secondary antibody and DAB staining. This data demonstrates the use of the CC130 Antibody (Center) for immunohistochemistry. Clinical relevance has not been evaluated.



CC130 Antibody (Center) (Cat. #AP4737c) flow cytometric analysis of Jurkat cells (bottom histogram) compared to a negative control cell (top histogram). FITC-conjugated goat-anti-rabbit secondary antibodies were used for the analysis.

CC130 Antibody (Center) - References

Olsen, J.V., et al. Cell 127(3):635-648(2006)
Lammers, R., et al. Eur. J. Biochem. 178(1):93-99(1988)