

RRS1 Antibody (C-term)
Affinity Purified Rabbit Polyclonal Antibody (Pab)
Catalog # AP4742b**Specification**

RRS1 Antibody (C-term) - Product Information

Application	FC, WB,E
Primary Accession	Q15050
Reactivity	Human
Host	Rabbit
Clonality	Polyclonal
Isotype	Rabbit IgG
Calculated MW	41193
Antigen Region	336-365

RRS1 Antibody (C-term) - Additional Information**Gene ID** 23212**Other Names**

Ribosome biogenesis regulatory protein homolog, RRS1, KIAA0112, RRR

Target/Specificity

This RRS1 antibody is generated from rabbits immunized with a KLH conjugated synthetic peptide between 336-365 amino acids from the C-terminal region of human RRS1.

Dilution

FC~~1:10~50

WB~~1:1000

E~~Use at an assay dependent concentration.

Format

Purified polyclonal antibody supplied in PBS with 0.09% (W/V) sodium azide. This antibody is purified through a protein A column, followed by peptide affinity purification.

Storage

Maintain refrigerated at 2-8°C for up to 2 weeks. For long term storage store at -20°C in small aliquots to prevent freeze-thaw cycles.

Precautions

RRS1 Antibody (C-term) is for research use only and not for use in diagnostic or therapeutic procedures.

RRS1 Antibody (C-term) - Protein Information**Name** RRS1**Synonyms** KIAA0112, RRR

Function Involved in ribosomal large subunit assembly. May regulate the localization of the 5S RNP/5S ribonucleoprotein particle to the nucleolus.

Cellular Location

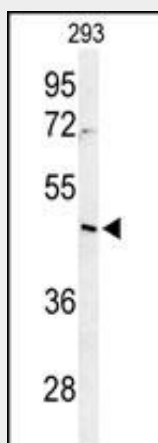
Nucleus, nucleolus {ECO:0000269|PubMed:12429849, ECO:0000269|Ref.3}

RRS1 Antibody (C-term) - Protocols

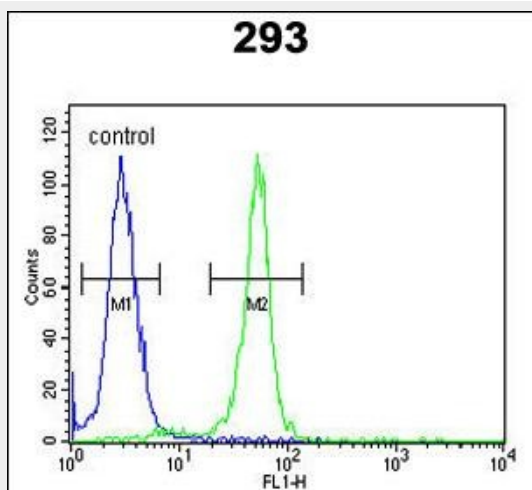
Provided below are standard protocols that you may find useful for product applications.

- [Western Blot](#)
- [Blocking Peptides](#)
- [Dot Blot](#)
- [Immunohistochemistry](#)
- [Immunofluorescence](#)
- [Immunoprecipitation](#)
- [Flow Cytometry](#)
- [Cell Culture](#)

RRS1 Antibody (C-term) - Images



Western blot analysis of RRS1 Antibody (C-term) (Cat. #AP4742b) in 293 cell line lysates (35ug/lane). RRS1 (arrow) was detected using the purified Pab.



RRS1 Antibody (C-term) (Cat. #AP4742b) flow cytometric analysis of 293 cells (right histogram) compared to a negative control cell (left histogram). FITC-conjugated goat-anti-rabbit secondary antibodies were used for the analysis.

RRS1 Antibody (C-term) - Background

RRS1 involved in ribosome biogenesis.

RRS1 Antibody (C-term) - References

Gambe, A.E., et al. FEBS Lett. 583(12):1951-1956(2009)
Andersen, J.S., et al. Nature 433(7021):77-83(2005)
Scherl, A., et al. Mol. Biol. Cell 13(11):4100-4109(2002)