

PAR6G Antibody (N-term)
Affinity Purified Rabbit Polyclonal Antibody (Pab)
Catalog # AP4750A

Specification

PAR6G Antibody (N-term) - Product Information

Application	IHC-P, WB,E
Primary Accession	Q9BYG4
Reactivity	Human
Host	Rabbit
Clonality	Polyclonal
Isotype	Rabbit IgG
Calculated MW	40883
Antigen Region	18-47

PAR6G Antibody (N-term) - Additional Information

Gene ID 84552

Other Names

Partitioning defective 6 homolog gamma, PAR-6 gamma, PAR6D, PARD6G, PAR6G

Target/Specificity

This PAR6G antibody is generated from rabbits immunized with a KLH conjugated synthetic peptide between 18-47 amino acids from the N-terminal region of human PAR6G.

Dilution

IHC-P~~1:50~100

WB~~1:1000

E~~Use at an assay dependent concentration.

Format

Purified polyclonal antibody supplied in PBS with 0.09% (W/V) sodium azide. This antibody is purified through a protein A column, followed by peptide affinity purification.

Storage

Maintain refrigerated at 2-8°C for up to 2 weeks. For long term storage store at -20°C in small aliquots to prevent freeze-thaw cycles.

Precautions

PAR6G Antibody (N-term) is for research use only and not for use in diagnostic or therapeutic procedures.

PAR6G Antibody (N-term) - Protein Information

Name PARD6G

Synonyms PAR6G

Function Adapter protein involved in asymmetrical cell division and cell polarization processes. May play a role in the formation of epithelial tight junctions. The PARD6-PARD3 complex links GTP-bound Rho small GTPases to atypical protein kinase C proteins (By similarity).

Cellular Location

Cytoplasm. Cell membrane. Cell junction, tight junction

Tissue Location

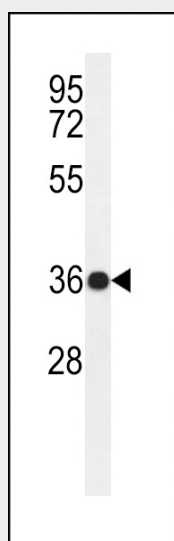
Widely expressed, with a higher expression in fetal and adult kidney

PAR6G Antibody (N-term) - Protocols

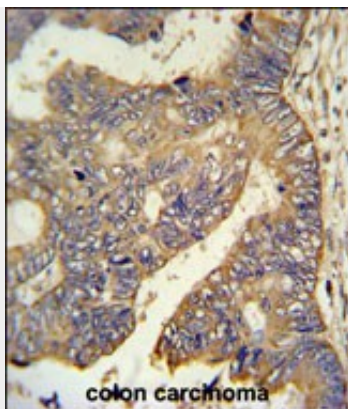
Provided below are standard protocols that you may find useful for product applications.

- [Western Blot](#)
- [Blocking Peptides](#)
- [Dot Blot](#)
- [Immunohistochemistry](#)
- [Immunofluorescence](#)
- [Immunoprecipitation](#)
- [Flow Cytometry](#)
- [Cell Culture](#)

PAR6G Antibody (N-term) - Images



Western blot analysis of PAR6G Antibody (N-term) (Cat. #AP4750a) in ZR-75-1 cell line lysates (35ug/lane). PAR6G (arrow) was detected using the purified Pab.



PAR6G Antibody (N-term) (Cat. #AP4750a) IHC analysis in formalin fixed and paraffin embedded human colon carcinoma followed by peroxidase conjugation of the secondary antibody and DAB staining. This data demonstrates the use of the PAR6G Antibody (N-term) for immunohistochemistry. Clinical relevance has not been evaluated.

PAR6G Antibody (N-term) - Background

PAR6G involved in asymmetrical cell division and cell polarization processes. PAR6G may play a role in the formation of epithelial tight junctions. The PARD6-PARD3 complex links GTP-bound Rho small GTPases to atypical protein kinase C proteins.

PAR6G Antibody (N-term) - References

Brajenovic, M., et al. J. Biol. Chem. 279(13):12804-12811(2004)
Kohjima, M., et al. Biochem. Biophys. Res. Commun. 299(4):641-646(2002)
Suzuki, A., et al. J. Cell Biol. 152(6):1183-1196(2001)