

**G7C Antibody (N-term)**  
**Affinity Purified Rabbit Polyclonal Antibody (Pab)**  
**Catalog # AP4763a****Specification**

---

**G7C Antibody (N-term) - Product Information**

Application	WB, IHC-P,E
Primary Accession	<a href="#">O9Y334</a>
Reactivity	Human, Mouse
Host	Rabbit
Clonality	Polyclonal
Isotype	Rabbit IgG
Calculated MW	96060
Antigen Region	104-132

**G7C Antibody (N-term) - Additional Information****Gene ID** 80737**Other Names**

von Willebrand factor A domain-containing protein 7, Protein G7c, VWA7, C6orf27, G7C, NG37

**Target/Specificity**

This G7C antibody is generated from rabbits immunized with a KLH conjugated synthetic peptide between 104-132 amino acids from the N-terminal region of human G7C.

**Dilution**WB~~1:1000  
IHC-P~~1:50~100**Format**

Purified polyclonal antibody supplied in PBS with 0.09% (W/V) sodium azide. This antibody is purified through a protein A column, followed by peptide affinity purification.

**Storage**

Maintain refrigerated at 2-8°C for up to 2 weeks. For long term storage store at -20°C in small aliquots to prevent freeze-thaw cycles.

**Precautions**

G7C Antibody (N-term) is for research use only and not for use in diagnostic or therapeutic procedures.

**G7C Antibody (N-term) - Protein Information****Name** VWA7**Synonyms** C6orf27, G7C, NG37

**Cellular Location**

Secreted.

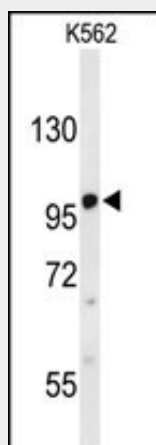
**Tissue Location**

Expressed at low level in different cell lines.

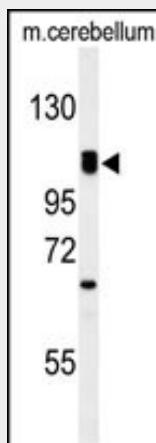
**G7C Antibody (N-term) - Protocols**

Provided below are standard protocols that you may find useful for product applications.

- [Western Blot](#)
- [Blocking Peptides](#)
- [Dot Blot](#)
- [Immunohistochemistry](#)
- [Immunofluorescence](#)
- [Immunoprecipitation](#)
- [Flow Cytometry](#)
- [Cell Culture](#)

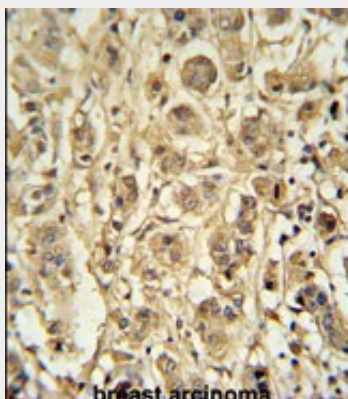
**G7C Antibody (N-term) - Images**

Western blot analysis of G7C Antibody (N-term) (Cat. #AP4763a) in K562 cell line lysates (35ug/lane). G7C (arrow) was detected using the purified Pab.



Western blot analysis of G7C Antibody (N-term) (Cat. #AP4763a) in mouse cerebellum tissue

lysates (35ug/lane). G7C (arrow) was detected using the purified Pab.



G7C Antibody (N-term) (Cat. #AP4763a) immunohistochemistry analysis in formalin fixed and paraffin embedded human breast carcinoma followed by peroxidase conjugation of the secondary antibody and DAB staining. This data demonstrates the use of the G7C Antibody (N-term) for immunohistochemistry. Clinical relevance has not been evaluated.

#### **G7C Antibody (N-term) - References**

Chapuis, J., et al. Mol. Psychiatry 14(11):1004-1016(2009)  
Barcellos, L.F., et al. PLoS Genet. 5 (10), E1000696 (2009)  
Valdes, A.M., et al. Diabetes Obes Metab 11 SUPPL 1, 46-52 (2009)