

**CLEC2B Antibody (Center)**  
**Affinity Purified Rabbit Polyclonal Antibody (Pab)**  
**Catalog # AP4770c****Specification**

---

**CLEC2B Antibody (Center) - Product Information**

Application	WB, FC,E
Primary Accession	<a href="#">Q92478</a>
Reactivity	Human
Host	Rabbit
Clonality	Polyclonal
Isotype	Rabbit IgG
Calculated MW	17307
Antigen Region	59-86

**CLEC2B Antibody (Center) - Additional Information****Gene ID** 9976**Other Names**

C-type lectin domain family 2 member B, Activation-induced C-type lectin, C-type lectin superfamily member 2, IFN-alpha-2b-inducing-related protein 1, CLEC2B, AICL, CLECSF2, IFNRG1

**Target/Specificity**

This CLEC2B antibody is generated from rabbits immunized with a KLH conjugated synthetic peptide between 59-86 amino acids from the Central region of human CLEC2B.

**Dilution**

WB~~1:1000

FC~~1:10~50

**Format**

Purified polyclonal antibody supplied in PBS with 0.09% (W/V) sodium azide. This antibody is purified through a protein A column, followed by peptide affinity purification.

**Storage**

Maintain refrigerated at 2-8°C for up to 2 weeks. For long term storage store at -20°C in small aliquots to prevent freeze-thaw cycles.

**Precautions**

CLEC2B Antibody (Center) is for research use only and not for use in diagnostic or therapeutic procedures.

**CLEC2B Antibody (Center) - Protein Information****Name** CLEC2B**Synonyms** AICL, CLECSF2, IFNRG1

**Cellular Location**

Membrane; Single-pass type II membrane protein

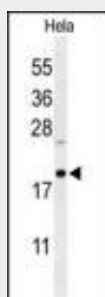
**Tissue Location**

Expressed preferentially in lymphoid tissues, and in most hematopoietic cell types

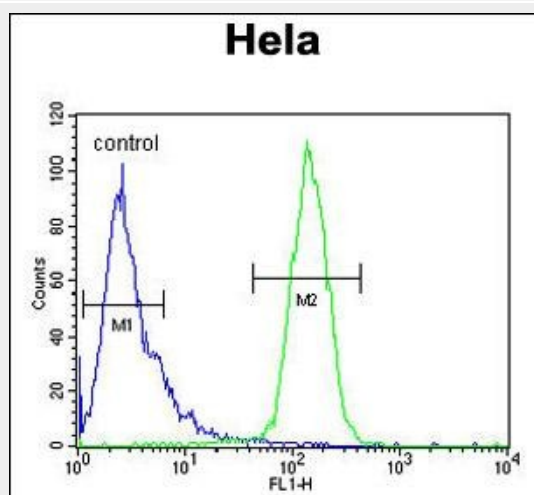
**CLEC2B Antibody (Center) - Protocols**

Provided below are standard protocols that you may find useful for product applications.

- [Western Blot](#)
- [Blocking Peptides](#)
- [Dot Blot](#)
- [Immunohistochemistry](#)
- [Immunofluorescence](#)
- [Immunoprecipitation](#)
- [Flow Cytometry](#)
- [Cell Culture](#)

**CLEC2B Antibody (Center) - Images**

Western blot analysis of CLEC2B Antibody (Center) (Cat. #AP4770c) in HeLa cell line lysates (35ug/lane). CLEC2B (arrow) was detected using the purified Pab.



CLEC2B Antibody (Center) (Cat. #AP4770c) flow cytometric analysis of HeLa cells (right histogram) compared to a negative control cell (left histogram). FITC-conjugated goat-anti-rabbit secondary antibodies were used for the analysis.

**CLEC2B Antibody (Center) - Background**

CLEC2B encodes a member of the C-type lectin/C-type lectin-like domain (CTL/CTLD) superfamily. Members of this family share a common protein fold and have diverse functions, such as cell adhesion, cell-cell signalling, glycoprotein turnover, and roles in inflammation and immune response. The encoded type 2 transmembrane protein may function as a cell activation antigen.

#### **CLEC2B Antibody (Center) - References**

Kuttruff, S., et al. Blood 113(2):358-369(2009)  
Ebner, S., et al. Proteins 53(1):44-55(2003)  
Renedo, M., et al. Genomics 65(2):129-136(2000)