

TOR1B Antibody (Center)
Affinity Purified Rabbit Polyclonal Antibody (Pab)
Catalog # AP4771c**Specification**

TOR1B Antibody (Center) - Product Information

Application	WB,E
Primary Accession	O14657
Reactivity	Human, Mouse
Host	Rabbit
Clonality	Polyclonal
Isotype	Rabbit IgG
Calculated MW	37979
Antigen Region	210-237

TOR1B Antibody (Center) - Additional Information**Gene ID** 27348**Other Names**

Torsin-1B, Torsin ATPase-1B, 364-, Torsin family 1 member B, TOR1B, DQ1

Target/Specificity

This TOR1B antibody is generated from rabbits immunized with a KLH conjugated synthetic peptide between 210-237 amino acids from the Central region of human TOR1B.

Dilution

WB~~1:1000

E~~Use at an assay dependent concentration.

Format

Purified polyclonal antibody supplied in PBS with 0.09% (W/V) sodium azide. This antibody is purified through a protein A column, followed by peptide affinity purification.

Storage

Maintain refrigerated at 2-8°C for up to 2 weeks. For long term storage store at -20°C in small aliquots to prevent freeze-thaw cycles.

Precautions

TOR1B Antibody (Center) is for research use only and not for use in diagnostic or therapeutic procedures.

TOR1B Antibody (Center) - Protein Information**Name** TOR1B**Synonyms** DQ1

Function May serve as a molecular chaperone assisting in the proper folding of secreted and/or membrane proteins. Plays a role in non- neural cells nuclear envelope and endoplasmic reticulum integrity. May have a redundant function with TOR1A in non-neural tissues.

Cellular Location

Endoplasmic reticulum lumen. Nucleus membrane

Tissue Location

Widely expressed with low levels in brain.

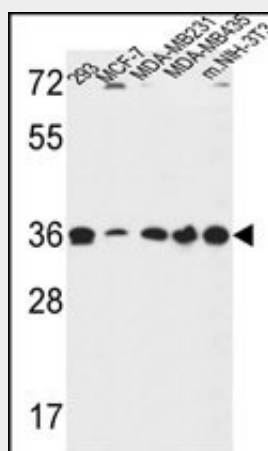
TOR1B Antibody (Center) - Protocols

Provided below are standard protocols that you may find useful for product applications.

- [Western Blot](#)
- [Blocking Peptides](#)
- [Dot Blot](#)
- [Immunohistochemistry](#)
- [Immunofluorescence](#)
- [Immunoprecipitation](#)

- [Flow Cytometry](#)
- [Cell Culture](#)

TOR1B Antibody (Center) - Images



TOR1B Antibody (Center) (Cat. #AP4771c) western blot analysis in 293,MCF-7,MDA-MB231,MDA-MB435,and mouse NIH-3T3 cell line lysates (35ug/lane).This demonstrates the TOR1B antibody detected the TOR1B protein (arrow).

TOR1B Antibody (Center) - Background

TOR1B may serve as a molecular chaperone assisting in the proper folding of secreted and/or membrane proteins.

TOR1B Antibody (Center) - References

Kamm, C., et al. Neurology 67(10):1857-1859(2006)
Bahn, E., et al. Brain Res. 1116(1):112-119(2006)
Hewett, J.W., et al. J. Neurochem. 89(5):1186-1194(2004)