

SYTL2 Antibody (Center)
Affinity Purified Rabbit Polyclonal Antibody (Pab)
Catalog # AP4801c**Specification**

SYTL2 Antibody (Center) - Product Information

Application	FC, IHC-P, WB,E
Primary Accession	Q9HCH5
Reactivity	Human
Host	Rabbit
Clonality	Polyclonal
Isotype	Rabbit IgG
Calculated MW	104930
Antigen Region	840-868

SYTL2 Antibody (Center) - Additional Information**Gene ID** 54843**Other Names**

Synaptotagmin-like protein 2, Breast cancer-associated antigen SGA-72M, Exophilin-4, SYTL2, KIAA1597, SGA72M, SLP2, SLP2A

Target/Specificity

This SYTL2 antibody is generated from rabbits immunized with a KLH conjugated synthetic peptide between 840-868 amino acids from the Central region of human SYTL2.

Dilution

FC~~1:10~50

IHC-P~~1:50~100

WB~~1:1000

E~~Use at an assay dependent concentration.

Format

Purified polyclonal antibody supplied in PBS with 0.09% (W/V) sodium azide. This antibody is purified through a protein A column, followed by peptide affinity purification.

Storage

Maintain refrigerated at 2-8°C for up to 2 weeks. For long term storage store at -20°C in small aliquots to prevent freeze-thaw cycles.

Precautions

SYTL2 Antibody (Center) is for research use only and not for use in diagnostic or therapeutic procedures.

SYTL2 Antibody (Center) - Protein Information**Name** SYTL2

Synonyms KIAA1597, SGA72M, SLP2, SLP2A

Function Isoform 1 acts as a RAB27A effector protein and plays a role in cytotoxic granule exocytosis in lymphocytes. It is required for cytotoxic granule docking at the immunologic synapse. Isoform 4 binds phosphatidylserine (PS) and phosphatidylinositol-4,5-bisphosphate (PIP2) and promotes the recruitment of glucagon-containing granules to the cell membrane in pancreatic alpha cells. Binding to PS is inhibited by Ca^{2+} while binding to PIP2 is Ca^{2+} insensitive.

Cellular Location

[Isoform 1]: Cytoplasm. Cell membrane Note=Recruited on vesicular structures in cytotoxic T-lymphocytes (CTL) by RAB27A.

Tissue Location

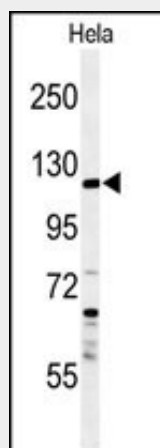
Isoform 1 is expressed in hematopoietic lineages with a strong expression in CD4 and CD8 T-lymphocytes. It is also widely expressed in nonhematopoietic tissues. Isoform 5 is expressed only in nonhematopoietic tissues. Isoform 4 is expressed in pancreatic alpha cells.

SYTL2 Antibody (Center) - Protocols

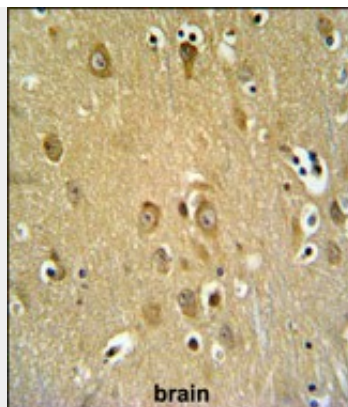
Provided below are standard protocols that you may find useful for product applications.

- [Western Blot](#)
- [Blocking Peptides](#)
- [Dot Blot](#)
- [Immunohistochemistry](#)
- [Immunofluorescence](#)
- [Immunoprecipitation](#)
- [Flow Cytometry](#)
- [Cell Culture](#)

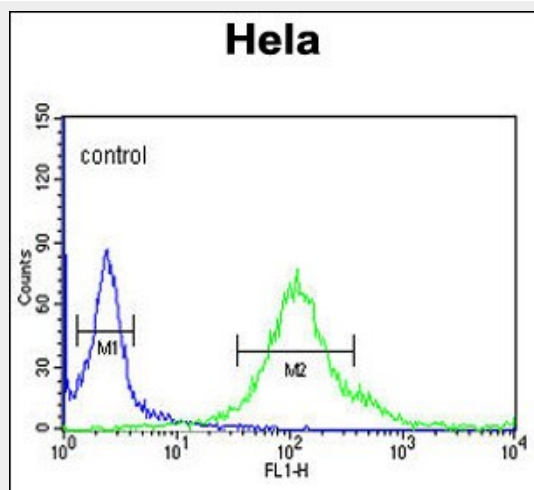
SYTL2 Antibody (Center) - Images



Western blot analysis of SYTL2 Antibody (Center) (Cat. #AP4801c) in HeLa cell line lysates (35ug/lane). SYTL2 (arrow) was detected using the purified Pab.



SYTL2 Antibody (Center) (Cat. #AP4801c) IHC analysis in formalin fixed and paraffin embedded brain tissue followed by peroxidase conjugation of the secondary antibody and DAB staining. This data demonstrates the use of the SYTL2 Antibody (Center) for immunohistochemistry. Clinical relevance has not been evaluated.



SYTL2 Antibody (Center) (Cat. #AP4801c) flow cytometric analysis of HeLa cells (right histogram) compared to a negative control cell (left histogram). FITC-conjugated goat-anti-rabbit secondary antibodies were used for the analysis.

SYTL2 Antibody (Center) - Background

SYTL2 is a synaptotagmin-like protein (SLP) that belongs to a C2 domain-containing protein family. The SLP homology domain (SHD) of this protein has been shown to specifically bind the GTP-bound form of Ras-related protein Rab-27A (RAB27A). This protein plays a role in RAB27A-dependent vesicle trafficking and controls melanosome distribution in the cell periphery.

SYTL2 Antibody (Center) - References

Menasche, G., et al. Blood 112(13):5052-5062(2008)
Kesari, A., et al. Am. J. Pathol. 173(5):1476-1487(2008)
Chavas, L.M., et al. Structure 16(10):1468-1477(2008)