

**RPS15A Antibody (N-term)**  
**Affinity Purified Rabbit Polyclonal Antibody (Pab)**  
**Catalog # AP4804a**

**Specification**

---

**RPS15A Antibody (N-term) - Product Information**

Application	FC, IHC-P, WB,E
Primary Accession	<a href="#">P62244</a>
Other Accession	<a href="#">P62246</a> , <a href="#">P62245</a> , <a href="#">Q76I82</a> , <a href="#">Q6Q420</a> , <a href="#">G1TG89</a>
Reactivity	Human
Predicted	Bovine, Zebrafish, Mouse, Rabbit, Rat
Host	Rabbit
Clonality	Polyclonal
Isotype	Rabbit IgG
Antigen Region	1-30

**RPS15A Antibody (N-term) - Additional Information**

**Gene ID** 6210

**Other Names**

40S ribosomal protein S15a, RPS15A

**Target/Specificity**

This RPS15A antibody is generated from rabbits immunized with a KLH conjugated synthetic peptide between 1-30 amino acids from the N-terminal region of human RPS15A.

**Dilution**

FC~~1:10~50

IHC-P~~1:50~100

WB~~1:1000

E~~Use at an assay dependent concentration.

**Format**

Purified polyclonal antibody supplied in PBS with 0.09% (W/V) sodium azide. This antibody is purified through a protein A column, followed by peptide affinity purification.

**Storage**

Maintain refrigerated at 2-8°C for up to 2 weeks. For long term storage store at -20°C in small aliquots to prevent freeze-thaw cycles.

**Precautions**

RPS15A Antibody (N-term) is for research use only and not for use in diagnostic or therapeutic procedures.

**RPS15A Antibody (N-term) - Protein Information**

**Name** RPS15A ([HGNC:10389](#))

**Function** Component of the small ribosomal subunit (PubMed:[23636399](#)). Part of the small subunit (SSU) processome, first precursor of the small eukaryotic ribosomal subunit. During the assembly of the SSU processome in the nucleolus, many ribosome biogenesis factors, an RNA chaperone and ribosomal proteins associate with the nascent pre-rRNA and work in concert to generate RNA folding, modifications, rearrangements and cleavage as well as targeted degradation of pre- ribosomal RNA by the RNA exosome (PubMed:[34516797](#)). Required for proper erythropoiesis (PubMed:[27909223](#)).

**Cellular Location**

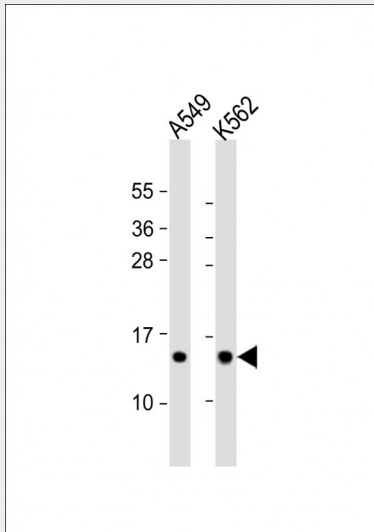
Cytoplasm. Nucleus, nucleolus

**RPS15A Antibody (N-term) - Protocols**

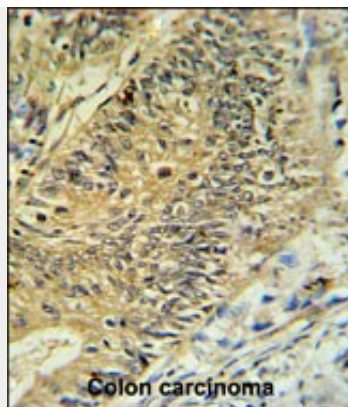
Provided below are standard protocols that you may find useful for product applications.

- [Western Blot](#)
- [Blocking Peptides](#)
- [Dot Blot](#)
- [Immunohistochemistry](#)
- [Immunofluorescence](#)
- [Immunoprecipitation](#)
- [Flow Cytometry](#)
- [Cell Culture](#)

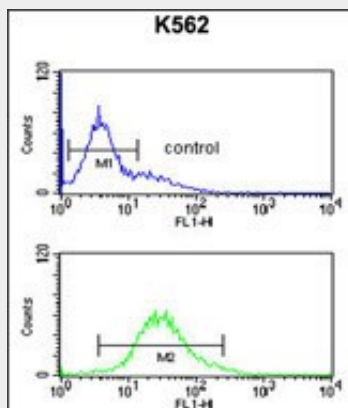
**RPS15A Antibody (N-term) - Images**



All lanes : Anti-RPS15A Antibody (N-term) at 1:1000 dilution Lane 1: A549 whole cell lysate Lane 2: K562 whole cell lysate Lysates/proteins at 20 µg per lane. Secondary Goat Anti-Rabbit IgG, (H+L), Peroxidase conjugated at 1/10000 dilution. Predicted band size : 15 kDa Blocking/Dilution buffer: 5% NFDM/TBST.



RPS15A Antibody (N-term) (Cat. #AP4804a) IHC analysis in formalin fixed and paraffin embedded colon carcinoma followed by peroxidase conjugation of the secondary antibody and DAB staining. This data demonstrates the use of the RPS15A Antibody (N-term) for immunohistochemistry. Clinical relevance has not been evaluated.



RPS15A Antibody (N-term) (Cat. #AP4804a) flow cytometric analysis of K562 cells (bottom histogram) compared to a negative control cell (top histogram). FITC-conjugated goat-anti-rabbit secondary antibodies were used for the analysis.

### RPS15A Antibody (N-term) - Background

RPS15A consist of a small 40S subunit and a large 60S subunit. Together these subunits are composed of 4 RNA species and approximately 80 structurally distinct proteins. This gene encodes a ribosomal protein that is a component of the 40S subunit. The protein belongs to the S8P family of ribosomal proteins. It is located in the cytoplasm. As is typical for genes encoding ribosomal proteins, there are multiple processed pseudogenes of this gene dispersed through the genome.

### RPS15A Antibody (N-term) - References

Yu, Y., et al. Protein Sci. 14(6):1438-1446(2005)  
Lian, Z., et al. Mol. Carcinog. 40(1):34-46(2004)  
Lehner, B., et al. Genomics 83(1):153-167(2004)

### RPS15A Antibody (N-term) - Citations

- [Knockdown of ribosomal protein S15A inhibits human kidney cancer cell growth in vitro and in vivo.](#)
- [shRNA-mediated RPS15A silencing inhibits U937 acute myeloid leukemia cell proliferation and enhances apoptosis.](#)
- [Decreased expression of RPS15A suppresses proliferation of lung cancer cells.](#)