

CWC15 Antibody (Center)
Affinity Purified Rabbit Polyclonal Antibody (Pab)
Catalog # AP4809c**Specification**

CWC15 Antibody (Center) - Product Information

Application	WB, IHC-P,E
Primary Accession	Q9P013
Other Accession	Q5BJP2 , Q9JHS9 , Q2KJD3
Reactivity	Human, Hamster
Predicted	Bovine, Mouse, Rat
Host	Rabbit
Clonality	Polyclonal
Isotype	Rabbit IgG
Calculated MW	26624
Antigen Region	123-152

CWC15 Antibody (Center) - Additional Information**Gene ID** 51503**Other Names**

Spliceosome-associated protein CWC15 homolog, CWC15, C11orf5

Target/Specificity

This CWC15 antibody is generated from rabbits immunized with a KLH conjugated synthetic peptide between 123-152 amino acids from the Central region of human CWC15.

Dilution

WB~~1:1000

IHC-P~~1:50~100

Format

Purified polyclonal antibody supplied in PBS with 0.09% (W/V) sodium azide. This antibody is purified through a protein A column, followed by peptide affinity purification.

Storage

Maintain refrigerated at 2-8°C for up to 2 weeks. For long term storage store at -20°C in small aliquots to prevent freeze-thaw cycles.

Precautions

CWC15 Antibody (Center) is for research use only and not for use in diagnostic or therapeutic procedures.

CWC15 Antibody (Center) - Protein Information**Name** CWC15

Synonyms C11orf5

Function Involved in pre-mRNA splicing as component of the spliceosome (PubMed:[28502770](#), PubMed:[28076346](#)). Component of the PRP19-CDC5L complex that forms an integral part of the spliceosome and is required for activating pre-mRNA splicing. As a component of the minor spliceosome, involved in the splicing of U12-type introns in pre-mRNAs (Probable).

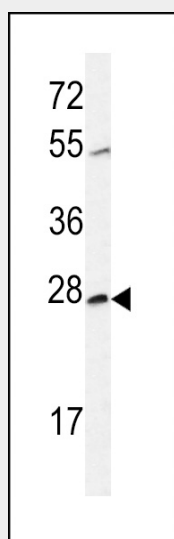
Cellular Location

Nucleus

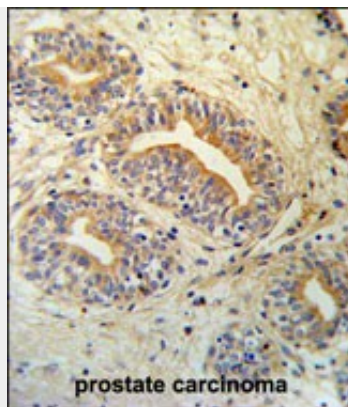
CWC15 Antibody (Center) - Protocols

Provided below are standard protocols that you may find useful for product applications.

- [Western Blot](#)
- [Blocking Peptides](#)
- [Dot Blot](#)
- [Immunohistochemistry](#)
- [Immunofluorescence](#)
- [Immunoprecipitation](#)
- [Flow Cytometry](#)
- [Cell Culture](#)

CWC15 Antibody (Center) - Images

Western blot analysis of CWC15 Antibody (Center) (Cat. #AP4809c) in CHO cell line lysates (35ug/lane). CWC15 (arrow) was detected using the purified Pab.



CWC15 Antibody (Center) (Cat. #AP4809c) IHC analysis in formalin fixed and paraffin embedded prostate carcinoma followed by peroxidase conjugation of the secondary antibody and DAB staining. This data demonstrates the use of the CWC15 Antibody (Center) for immunohistochemistry. Clinical relevance has not been evaluated.

CWC15 Antibody (Center) - Background

CWC15 involved in pre-mRNA splicing.

CWC15 Antibody (Center) - References

Anney, R.J., et al. Am. J. Med. Genet. B Neuropsychiatr. Genet. 147B (8), 1369-1378 (2008)
Olsen, J.V., et al. Cell 127(3):635-648(2006)
Ohi, M.D., et al. Mol. Cell. Biol. 22(7):2011-2024(2002)