

TOX3 Antibody (Center)
Affinity Purified Rabbit Polyclonal Antibody (Pab)
Catalog # AP4814c**Specification**

TOX3 Antibody (Center) - Product Information

Application	FC, WB, IHC-P,E
Primary Accession	O15405
Reactivity	Human, Mouse
Host	Rabbit
Clonality	Polyclonal
Isotype	Rabbit IgG
Antigen Region	214-242

TOX3 Antibody (Center) - Additional Information**Gene ID** 27324**Other Names**

TOX high mobility group box family member 3, CAG trinucleotide repeat-containing gene F9 protein, Trinucleotide repeat-containing gene 9 protein, TOX3, CAGF9, TNRC9

Target/Specificity

This TOX3 antibody is generated from rabbits immunized with a KLH conjugated synthetic peptide between 214-242 amino acids from the Central region of human TOX3.

Dilution

FC~~1:10~50

WB~~1:1000

IHC-P~~1:50~100

E~~Use at an assay dependent concentration.

Format

Purified polyclonal antibody supplied in PBS with 0.09% (W/V) sodium azide. This antibody is purified through a protein A column, followed by peptide affinity purification.

Storage

Maintain refrigerated at 2-8°C for up to 2 weeks. For long term storage store at -20°C in small aliquots to prevent freeze-thaw cycles.

Precautions

TOX3 Antibody (Center) is for research use only and not for use in diagnostic or therapeutic procedures.

TOX3 Antibody (Center) - Protein Information**Name** TOX3

Synonyms CAGF9, TNRC9

Function Transcriptional coactivator of the p300/CBP-mediated transcription complex. Activates transactivation through cAMP response element (CRE) sites. Protects against cell death by inducing antiapoptotic and repressing pro-apoptotic transcripts. Stimulates transcription from the estrogen-responsive or BCL-2 promoters. Required for depolarization-induced transcription activation of the C-FOS promoter in neurons. Associates with chromatin to the estrogen-responsive C3 promoter region.

Cellular Location

Nucleus.

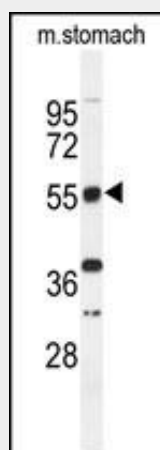
Tissue Location

Expressed mainly in epithelial cells. Expressed in the central nervous system (CNS), in the ileum and within the brain in the frontal and occipital lobe.

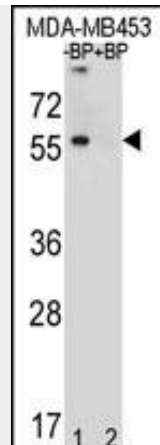
TOX3 Antibody (Center) - Protocols

Provided below are standard protocols that you may find useful for product applications.

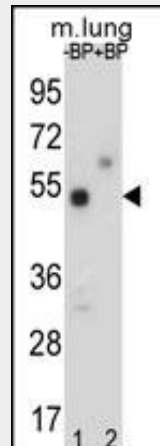
- [Western Blot](#)
- [Blocking Peptides](#)
- [Dot Blot](#)
- [Immunohistochemistry](#)
- [Immunofluorescence](#)
- [Immunoprecipitation](#)
- [Flow Cytometry](#)
- [Cell Culture](#)

TOX3 Antibody (Center) - Images

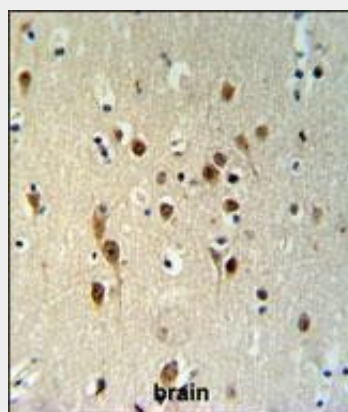
Western blot analysis of TOX3 Antibody (Center) (Cat. #AP4814c) in mouse stomach tissue lysates (35ug/lane). TOX3 (arrow) was detected using the purified Pab.



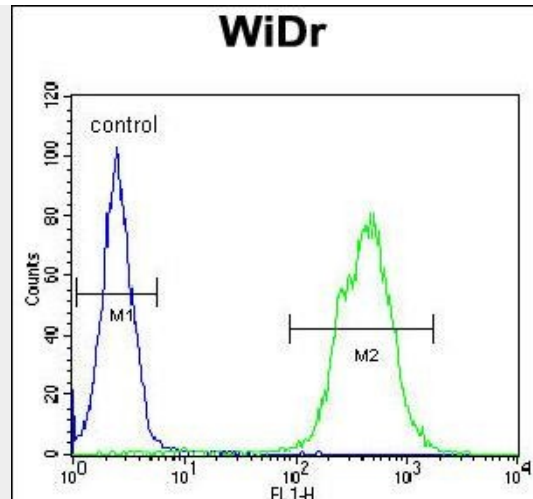
Western blot analysis of TOX3 Antibody (Center) Pab (Cat. #AP4814c) pre-incubated without (lane 1) and with (lane 2) blocking peptide in MDA-MB453 cell line lysate. TOX3 Antibody (Center) (arrow) was detected using the purified Pab.



Western blot analysis of TOX3 Antibody (Center) Pab (Cat. #AP4814c) pre-incubated without (lane 1) and with (lane 2) blocking peptide in mouse lung tissue lysate. TOX3 Antibody (Center) (arrow) was detected using the purified Pab.



TOX3 Antibody (Center) (Cat. #AP4814c) IHC analysis in formalin fixed and paraffin embedded brain tissue followed by peroxidase conjugation of the secondary antibody and DAB staining. This data demonstrates the use of the TOX3 Antibody (Center) for immunohistochemistry. Clinical relevance has not been evaluated.



TOX3 Antibody (Center) (Cat. #AP4814c) flow cytometric analysis of WiDr cells (right histogram) compared to a negative control cell (left histogram). FITC-conjugated goat-anti-rabbit secondary antibodies were used for the analysis.

TOX3 Antibody (Center) - Background

TOX3 contains an HMG-box, indicating that it may be involved in bending and unwinding of DNA and alteration of chromatin structure. The C-terminus of the encoded protein is glutamine-rich due to CAG repeats in the coding sequence. A minor allele of this gene has been implicated in an elevated risk of breast cancer.

TOX3 Antibody (Center) - References

Wacholder, S., et al. N. Engl. J. Med. 362(11):986-993(2010)
Odefrey, F., et al. Cancer Res. 70(4):1449-1458(2010)
Couch, F.J., et al. Cancer Epidemiol. Biomarkers Prev. 18(11):3044-3048(2009)
Stacey, S.N., et al. Nat. Genet. 39(7):865-869(2007)

TOX3 Antibody (Center) - Citations

- [TOX3 protein expression is correlated with pathological characteristics in breast cancer.](#)