

ATF1 Antibody (C-term)
Affinity Purified Rabbit Polyclonal Antibody (Pab)
Catalog # AP4862b**Specification**

ATF1 Antibody (C-term) - Product Information

Application	FC, WB,E
Primary Accession	P18846
Other Accession	Q08DA8
Reactivity	Human
Predicted	Bovine
Host	Rabbit
Clonality	Polyclonal
Isotype	Rabbit IgG
Calculated MW	29233
Antigen Region	193-219

ATF1 Antibody (C-term) - Additional Information**Gene ID** 466**Other Names**

Cyclic AMP-dependent transcription factor ATF-1, cAMP-dependent transcription factor ATF-1, Activating transcription factor 1, Protein TREB36, ATF1

Target/Specificity

This ATF1 antibody is generated from rabbits immunized with a KLH conjugated synthetic peptide between 193-219 amino acids from the C-terminal region of human ATF1.

Dilution

FC~~1:10~50

WB~~1:1000

E~~Use at an assay dependent concentration.

Format

Purified polyclonal antibody supplied in PBS with 0.09% (W/V) sodium azide. This antibody is purified through a protein A column, followed by peptide affinity purification.

Storage

Maintain refrigerated at 2-8°C for up to 2 weeks. For long term storage store at -20°C in small aliquots to prevent freeze-thaw cycles.

Precautions

ATF1 Antibody (C-term) is for research use only and not for use in diagnostic or therapeutic procedures.

ATF1 Antibody (C-term) - Protein Information

Name ATF1

Function This protein binds the cAMP response element (CRE) (consensus: 5'-GTGACGT[AC][AG]-3'), a sequence present in many viral and cellular promoters. Binds to the Tax-responsive element (TRE) of HTLV-I. Mediates PKA-induced stimulation of CRE-reporter genes. Represses the expression of FTH1 and other antioxidant detoxification genes. Triggers cell proliferation and transformation.

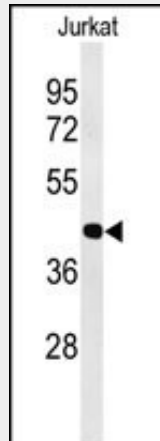
Cellular Location

Nucleus.

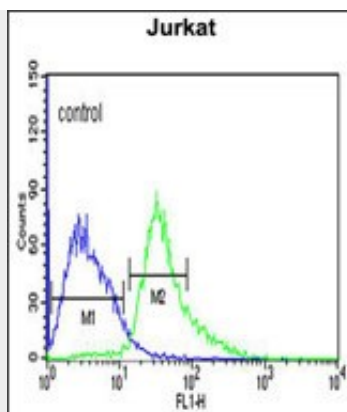
ATF1 Antibody (C-term) - Protocols

Provided below are standard protocols that you may find useful for product applications.

- [Western Blot](#)
- [Blocking Peptides](#)
- [Dot Blot](#)
- [Immunohistochemistry](#)
- [Immunofluorescence](#)
- [Immunoprecipitation](#)
- [Flow Cytometry](#)
- [Cell Culture](#)

ATF1 Antibody (C-term) - Images

Western blot analysis of ATF1 Antibody (C-term) (Cat. #AP4862b) in Jurkat cell line lysates (35ug/lane). ATF1 (arrow) was detected using the purified Pab.



ATF1 Antibody (C-term) (Cat. #AP4862b) flow cytometric analysis of Jurkat cells (right histogram) compared to a negative control cell (left histogram). FITC-conjugated goat-anti-rabbit secondary antibodies were used for the analysis.

ATF1 Antibody (C-term) - Background

ATF1 binds the cAMP response element (CRE) (consensus: 5'-GTGACGT[AC][AG]-3'), a sequence present in many viral and cellular promoters. ATF1 binds to the Tax-responsive element (TRE) of HTLV-I. ATF1 mediates PKA-induced stimulation of CRE-reporter genes.

ATF1 Antibody (C-term) - References

Wang, W.L., et al. Mod. Pathol. 22(9):1201-1209(2009)
Vega, A., et al. Gynecol. Oncol. 112(1):210-214(2009)
Zheng, D., et al. Cancer Res. 68(18):7650-7660(2008)