

TXNDC12 Antibody (C-term)
Affinity Purified Rabbit Polyclonal Antibody (Pab)
Catalog # AP4871b

Specification

TXNDC12 Antibody (C-term) - Product Information

Application	IHC-P, WB,E
Primary Accession	O95881
Reactivity	Human, Mouse
Host	Rabbit
Clonality	Polyclonal
Isotype	Rabbit IgG
Calculated MW	19206
Antigen Region	144-172

TXNDC12 Antibody (C-term) - Additional Information

Gene ID 51060

Other Names

Thioredoxin domain-containing protein 12, Endoplasmic reticulum resident protein 18, ER protein 18, ERp18, Endoplasmic reticulum resident protein 19, ER protein 19, ERp19, Thioredoxin-like protein p19, hTLP19, TXNDC12, TLP19

Target/Specificity

This TXNDC12 antibody is generated from rabbits immunized with a KLH conjugated synthetic peptide between 144-172 amino acids from the C-terminal region of human TXNDC12.

Dilution

IHC-P~~1:50~100

WB~~1:1000

E~~Use at an assay dependent concentration.

Format

Purified polyclonal antibody supplied in PBS with 0.09% (W/V) sodium azide. This antibody is purified through a protein A column, followed by peptide affinity purification.

Storage

Maintain refrigerated at 2-8°C for up to 2 weeks. For long term storage store at -20°C in small aliquots to prevent freeze-thaw cycles.

Precautions

TXNDC12 Antibody (C-term) is for research use only and not for use in diagnostic or therapeutic procedures.

TXNDC12 Antibody (C-term) - Protein Information

Name TXNDC12 ([HGNC:24626](#))

Function Protein-disulfide reductase of the endoplasmic reticulum that promotes disulfide bond formation in client proteins through its thiol- disulfide oxidase activity.

Cellular Location

Endoplasmic reticulum lumen {ECO:0000255|PROSITE- ProRule:PRU10138, ECO:0000269|PubMed:12761212}

Tissue Location

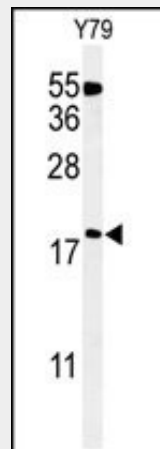
Widely expressed..

TXNDC12 Antibody (C-term) - Protocols

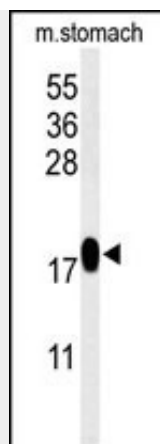
Provided below are standard protocols that you may find useful for product applications.

- [Western Blot](#)
- [Blocking Peptides](#)
- [Dot Blot](#)
- [Immunohistochemistry](#)
- [Immunofluorescence](#)
- [Immunoprecipitation](#)
- [Flow Cytometry](#)
- [Cell Culture](#)

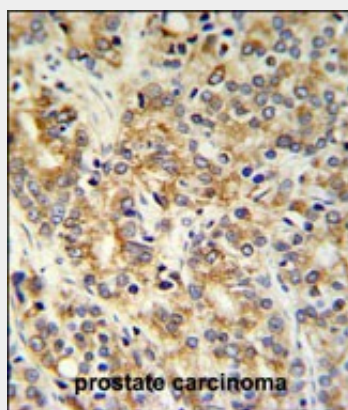
TXNDC12 Antibody (C-term) - Images



Western blot analysis of TXNDC12 Antibody (C-term) (Cat. #AP4871b) in Y79 cell line lysates (35ug/lane). TXNDC12 (arrow) was detected using the purified Pab.



Western blot analysis of TXNDC12 Antibody (C-term) (Cat. #AP4871b) in mouse stomach tissue lysates (35ug/lane). TXNDC12 (arrow) was detected using the purified Pab.



TXNDC12 Antibody (C-term) (Cat. #AP4871b) IHC analysis in formalin fixed and paraffin embedded prostate carcinoma followed by peroxidase conjugation of the secondary antibody and DAB staining. This data demonstrates the use of the TXNDC12 Antibody (C-term) for immunohistochemistry. Clinical relevance has not been evaluated.

TXNDC12 Antibody (C-term) - Background

TXNDC12 belongs to the thioredoxin superfamily (see TXN; MIM 187700). Members of this superfamily possess a thioredoxin fold with a consensus active-site sequence (CxxC) and have roles in redox regulation, defense against oxidative stress, refolding of disulfide-containing proteins, and regulation of transcription factors

TXNDC12 Antibody (C-term) - References

- Jessop, C.E., et al. J. Cell. Sci. 122 (PT 23), 4287-4295 (2009)
- Rowe, M.L., et al. Biochemistry 48(21):4596-4606(2009)
- Jeong, W., et al. J. Biol. Chem. 283(37):25557-25566(2008)