

**ERMIN Antibody (Center)**  
**Affinity Purified Rabbit Polyclonal Antibody (Pab)**  
**Catalog # AP4892c****Specification**

---

**ERMIN Antibody (Center) - Product Information**

Application	WB, FC,E
Primary Accession	<a href="#">Q8TAM6</a>
Reactivity	Human
Host	Rabbit
Clonality	Polyclonal
Isotype	Rabbit IgG
Calculated MW	32783
Antigen Region	113-141

**ERMIN Antibody (Center) - Additional Information****Gene ID** 57471**Other Names**

Ermin, Juxtanodin, JN, ERMN, KIAA1189

**Target/Specificity**

This ERMIN antibody is generated from rabbits immunized with a KLH conjugated synthetic peptide between 113-141 amino acids from the Central region of human ERMIN.

**Dilution**

WB~~1:1000

FC~~1:10~50

**Format**

Purified polyclonal antibody supplied in PBS with 0.09% (W/V) sodium azide. This antibody is purified through a protein A column, followed by peptide affinity purification.

**Storage**

Maintain refrigerated at 2-8°C for up to 2 weeks. For long term storage store at -20°C in small aliquots to prevent freeze-thaw cycles.

**Precautions**

ERMIN Antibody (Center) is for research use only and not for use in diagnostic or therapeutic procedures.

**ERMIN Antibody (Center) - Protein Information****Name** ERMN**Synonyms** KIAA1189

**Function** Plays a role in cytoskeletal rearrangements during the late wrapping and/or compaction phases of myelinogenesis as well as in maintenance and stability of myelin sheath in the adult. May play an important role in late-stage oligodendroglia maturation, myelin/Ranvier node formation during CNS development, and in the maintenance and plasticity of related structures in the mature CNS (By similarity).

**Cellular Location**

Cytoplasm, cytoskeleton.

**Tissue Location**

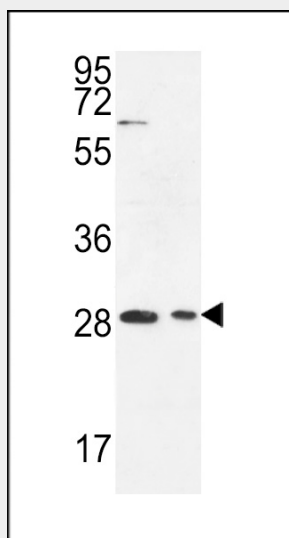
Highly expressed in adult and fetal brain. Expressed at intermediate levels in the lung and liver

**ERMIN Antibody (Center) - Protocols**

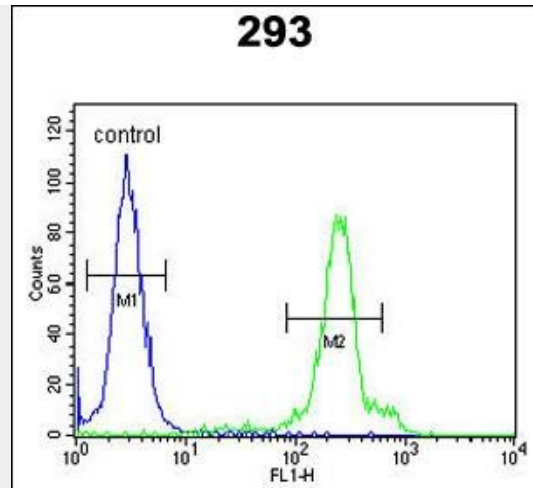
Provided below are standard protocols that you may find useful for product applications.

- [Western Blot](#)
- [Blocking Peptides](#)
- [Dot Blot](#)
- [Immunohistochemistry](#)
- [Immunofluorescence](#)
- [Immunoprecipitation](#)
- [Flow Cytometry](#)
- [Cell Culture](#)

**ERMIN Antibody (Center) - Images**



ERMIN Antibody (Center) (Cat. #AP4892c) western blot analysis in Jurkat,293 cell line lysates (35ug/lane). This demonstrates the ERMIN antibody detected the ERMIN protein (arrow).



ERMIN Antibody (Center) (Cat. #AP4892c) flow cytometric analysis of 293 cells (right histogram) compared to a negative control cell (left histogram). FITC-conjugated goat-anti-rabbit secondary antibodies were used for the analysis.

#### **ERMIN Antibody (Center) - Background**

ERMIN plays a role in cytoskeletal rearrangements during the late wrapping and/or compaction phases of myelinogenesis as well as in maintenance and stability of myelin sheath in the adult. ERMIN may play an important role in late-stage oligodendroglia maturation, myelin/Ranvier node formation during CNS development, and in the maintenance and plasticity of related structures in the mature CNS.

#### **ERMIN Antibody (Center) - References**

Brockschneider, D., et al. J. Neurosci. 26(3):757-762(2006)  
Zhang, B., et al. Proc. Natl. Acad. Sci. U.S.A. 102(32):11527-11532(2005)