

PLA2G4B Antibody (Center)
Affinity Purified Rabbit Polyclonal Antibody (Pab)
Catalog # AP4919c

Specification

PLA2G4B Antibody (Center) - Product Information

Application	WB, FC,E
Primary Accession	POC869
Reactivity	Human
Host	Rabbit
Clonality	Polyclonal
Isotype	Rabbit IgG
Calculated MW	87978
Antigen Region	396-424

PLA2G4B Antibody (Center) - Additional Information

Gene ID 100137049;8681

Other Names

Cytosolic phospholipase A2 beta, cPLA2-beta, Phospholipase A2 group IVB, PLA2G4B

Target/Specificity

This PLA2G4B antibody is generated from rabbits immunized with a KLH conjugated synthetic peptide between 396-424 amino acids from the Central region of human PLA2G4B.

Dilution

WB~~1:1000
FC~~1:10~50

Format

Purified polyclonal antibody supplied in PBS with 0.09% (W/V) sodium azide. This antibody is purified through a protein A column, followed by peptide affinity purification.

Storage

Maintain refrigerated at 2-8°C for up to 2 weeks. For long term storage store at -20°C in small aliquots to prevent freeze-thaw cycles.

Precautions

PLA2G4B Antibody (Center) is for research use only and not for use in diagnostic or therapeutic procedures.

PLA2G4B Antibody (Center) - Protein Information

Name PLA2G4B

Function Calcium-dependent phospholipase A1 and A2 and lysophospholipase that may play a role in membrane phospholipid remodeling.

Cellular Location

[Isoform 3]: Cytoplasm, cytosol. Mitochondrion membrane; Peripheral membrane protein. Early endosome membrane; Peripheral membrane protein. Note=Translocates to membrane vesicles in a calcium-dependent fashion.

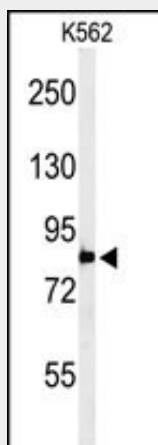
Tissue Location

Widely expressed. Expressed at higher level in brain, heart, liver, cerebellum and pancreas

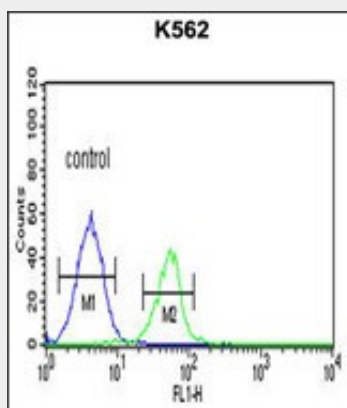
PLA2G4B Antibody (Center) - Protocols

Provided below are standard protocols that you may find useful for product applications.

- [Western Blot](#)
- [Blocking Peptides](#)
- [Dot Blot](#)
- [Immunohistochemistry](#)
- [Immunofluorescence](#)
- [Immunoprecipitation](#)
- [Flow Cytometry](#)
- [Cell Culture](#)

PLA2G4B Antibody (Center) - Images

Western blot analysis of PLA2G4B Antibody (Center) (Cat. #AP4919c) in K562 cell line lysates (35ug/lane). PLA2G4B (arrow) was detected using the purified Pab.



PLA2G4B Antibody (Center) (Cat. #AP4919c) flow cytometric analysis of K562 cells (right

histogram) compared to a negative control cell (left histogram). FITC-conjugated goat-anti-rabbit secondary antibodies were used for the analysis.

PLA2G4B Antibody (Center) - Background

PLA2G4B transcribes naturally-occurring mRNAs that are co-transcribed products of the neighboring JMJD7 and PLA2G4B genes. Incompletely processed read-through transcripts from these two loci are abundantly expressed in most tissues, but the function of the predicted protein product has not yet been determined.

PLA2G4B Antibody (Center) - References

Ghosh, M., et al. J. Biol. Chem. 281(24):16615-16624(2006)
Tao, R., et al. Am. J. Med. Genet. B Neuropsychiatr. Genet. 137B (1), 56-58 (2005)
Pope, S.N., et al. J. Steroid Biochem. Mol. Biol. 94 (1-3), 203-208 (2005)