

**PSG7 Antibody (C-term)**  
**Affinity Purified Rabbit Polyclonal Antibody (Pab)**  
**Catalog # AP4939b**

**Specification**

---

**PSG7 Antibody (C-term) - Product Information**

Application	FC, IHC-P, WB,E
Primary Accession	<a href="#">Q13046</a>
Reactivity	Human
Host	Rabbit
Clonality	Polyclonal
Isotype	Rabbit IgG
Calculated MW	47027
Antigen Region	265-293

**PSG7 Antibody (C-term) - Additional Information**

**Gene ID** 5676

**Other Names**

Putative pregnancy-specific beta-1-glycoprotein 7, PS-beta-G-7, PSBG-7, Pregnancy-specific glycoprotein 7, PSG7

**Target/Specificity**

This PSG7 antibody is generated from rabbits immunized with a KLH conjugated synthetic peptide between 265-293 amino acids from the C-terminal region of human PSG7.

**Dilution**

FC~~1:10~50

IHC-P~~1:50~100

WB~~1:1000

E~~Use at an assay dependent concentration.

**Format**

Purified polyclonal antibody supplied in PBS with 0.09% (W/V) sodium azide. This antibody is purified through a protein A column, followed by peptide affinity purification.

**Storage**

Maintain refrigerated at 2-8°C for up to 2 weeks. For long term storage store at -20°C in small aliquots to prevent freeze-thaw cycles.

**Precautions**

PSG7 Antibody (C-term) is for research use only and not for use in diagnostic or therapeutic procedures.

**PSG7 Antibody (C-term) - Protein Information**

**Name** PSG7 ([HGNC:9524](#))

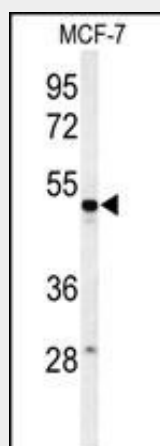
**Cellular Location**  
Secreted.

### PSG7 Antibody (C-term) - Protocols

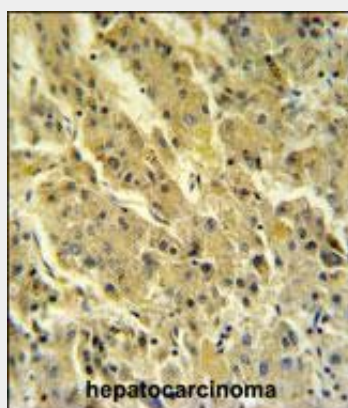
Provided below are standard protocols that you may find useful for product applications.

- [Western Blot](#)
- [Blocking Peptides](#)
- [Dot Blot](#)
- [Immunohistochemistry](#)
- [Immunofluorescence](#)
- [Immunoprecipitation](#)
- [Flow Cytometry](#)
- [Cell Culture](#)

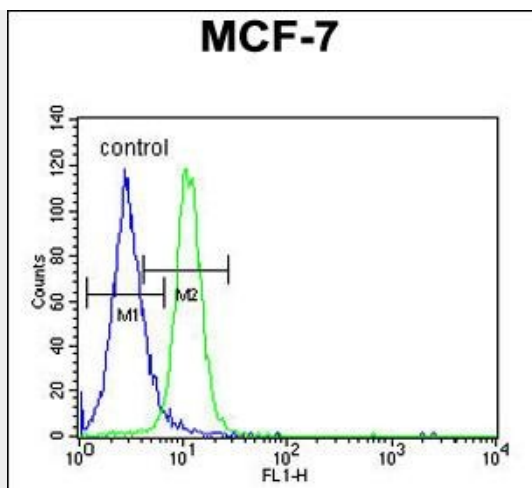
### PSG7 Antibody (C-term) - Images



Western blot analysis of PSG7 Antibody (C-term) (Cat. #AP4939b) in MCF-7 cell line lysates (35ug/lane). PSG7 (arrow) was detected using the purified Pab.



PSG7 Antibody (C-term) (Cat. #AP4939b) IHC analysis in formalin fixed and paraffin embedded hepatocarcinoma followed by peroxidase conjugation of the secondary antibody and DAB staining. This data demonstrates the use of the PSG7 Antibody (C-term) for immunohistochemistry. Clinical relevance has not been evaluated.



PSG7 Antibody (C-term) (Cat. #AP4939b) flow cytometric analysis of MCF-7 cells (right histogram) compared to a negative control cell (left histogram). FITC-conjugated goat-anti-rabbit secondary antibodies were used for the analysis.

#### **PSG7 Antibody (C-term) - Background**

PSG7 is a member of the pregnancy-specific glycoprotein (PSG) gene family. The PSG genes are a subgroup of the carcinoembryonic antigen (CEA) family of immunoglobulin-like genes, and are found in a gene cluster at 19q13.1-q13.2 telomeric to another cluster of CEA-related genes. The PSG genes are expressed by placental trophoblasts and released into the maternal circulation during pregnancy, and are thought to be essential for maintenance of normal pregnancy. The reference genome contains a nonsense mutation that disrupts the coding sequence, suggesting that this gene may be evolving into a pseudogene.

#### **PSG7 Antibody (C-term) - References**

Grimwood, J., et al. Nature 428(6982):529-535(2004)  
Beauchemin, N., et al. Exp. Cell Res. 252(2):243-249(1999)  
Adams, M.D., et al. Nature 377 (6547 SUPPL), 3-174 (1995)