

KCTD1 Antibody (C-term)
Affinity Purified Rabbit Polyclonal Antibody (Pab)
Catalog # AP4955b**Specification**

KCTD1 Antibody (C-term) - Product Information

Application	WB, IHC-P,E
Primary Accession	Q719H9
Other Accession	Q8R4G8 , Q5M956 , Q2HJ48
Reactivity	Human
Predicted	Bovine, Mouse, Rat
Host	Rabbit
Clonality	Polyclonal
Isotype	Rabbit IgG
Calculated MW	29405
Antigen Region	216-244

KCTD1 Antibody (C-term) - Additional Information**Gene ID** 284252**Other Names**

BTB/POZ domain-containing protein KCTD1, Potassium channel tetramerization domain-containing protein 1, KCTD1, C18orf5

Target/Specificity

This KCTD1 antibody is generated from rabbits immunized with a KLH conjugated synthetic peptide between 216-244 amino acids from the C-terminal region of human KCTD1.

DilutionWB~~1:1000
IHC-P~~1:50~100**Format**

Purified polyclonal antibody supplied in PBS with 0.09% (W/V) sodium azide. This antibody is purified through a protein A column, followed by peptide affinity purification.

Storage

Maintain refrigerated at 2-8°C for up to 2 weeks. For long term storage store at -20°C in small aliquots to prevent freeze-thaw cycles.

Precautions

KCTD1 Antibody (C-term) is for research use only and not for use in diagnostic or therapeutic procedures.

KCTD1 Antibody (C-term) - Protein Information**Name** KCTD1

Synonyms C18orf5

Function May repress the transcriptional activity of AP-2 family members, including TFAP2A, TFAP2B and TFAP2C to various extent.

Cellular Location

Nucleus.

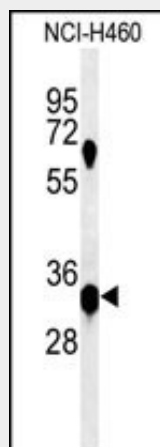
Tissue Location

Expressed in mammary gland, kidney, brain and ovary.

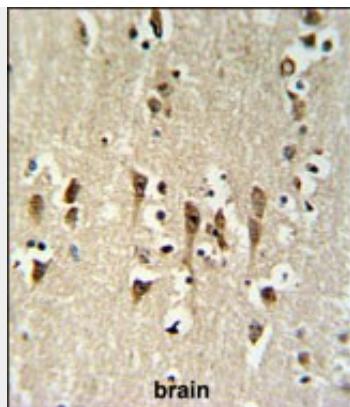
KCTD1 Antibody (C-term) - Protocols

Provided below are standard protocols that you may find useful for product applications.

- [Western Blot](#)
- [Blocking Peptides](#)
- [Dot Blot](#)
- [Immunohistochemistry](#)
- [Immunofluorescence](#)
- [Immunoprecipitation](#)
- [Flow Cytometry](#)
- [Cell Culture](#)

KCTD1 Antibody (C-term) - Images

Western blot analysis of KCTD1 Antibody (C-term) (Cat. #AP4955b) in NCI-H460 cell line lysates (35ug/lane). KCTD1 (arrow) was detected using the purified Pab.



KCTD1 Antibody (C-term) (Cat. #AP4955b) IHC analysis in formalin fixed and paraffin embedded brain tissue followed by peroxidase conjugation of the secondary antibody and DAB staining. This data demonstrates the use of the KCTD1 Antibody (C-term) for immunohistochemistry. Clinical relevance has not been evaluated.

KCTD1 Antibody (C-term) - References

- Ding, X., et al. J. Cell. Biochem. 106(2):285-295(2009)
Gocke, C.B., et al. J. Biol. Chem. 280(6):5004-5012(2005)
Ballif, B.A., et al. Mol. Cell Proteomics 3(11):1093-1101(2004)