

CC50B Antibody (N-term)
Affinity Purified Rabbit Polyclonal Antibody (Pab)
Catalog # AP4968a**Specification**

CC50B Antibody (N-term) - Product Information

Application	FC, IHC-P, WB,E
Primary Accession	Q3MIR4
Other Accession	NP_001017970
Reactivity	Human
Host	Rabbit
Clonality	Polyclonal
Isotype	Rabbit IgG
Calculated MW	38941
Antigen Region	42-71

CC50B Antibody (N-term) - Additional Information**Gene ID** 161291**Other Names**

Cell cycle control protein 50B, P4-ATPase flippase complex beta subunit TMEM30B,
Transmembrane protein 30B, TMEM30B, CDC50B

Target/Specificity

This CC50B antibody is generated from rabbits immunized with a KLH conjugated synthetic peptide between 42-71 amino acids from the N-terminal region of human CC50B.

Dilution

FC~~1:10~50

IHC-P~~1:50~100

WB~~1:1000

E~~Use at an assay dependent concentration.

Format

Purified polyclonal antibody supplied in PBS with 0.09% (W/V) sodium azide. This antibody is purified through a protein A column, followed by peptide affinity purification.

Storage

Maintain refrigerated at 2-8°C for up to 2 weeks. For long term storage store at -20°C in small aliquots to prevent freeze-thaw cycles.

Precautions

CC50B Antibody (N-term) is for research use only and not for use in diagnostic or therapeutic procedures.

CC50B Antibody (N-term) - Protein Information

Name TMEM30B

Synonyms CDC50B

Function Accessory component of a P4-ATPase flippase complex which catalyzes the hydrolysis of ATP coupled to the transport of aminophospholipids from the outer to the inner leaflet of various membranes and ensures the maintenance of asymmetric distribution of phospholipids. Phospholipid translocation also seems to be implicated in vesicle formation and in uptake of lipid signaling molecules. The beta subunit may assist in binding of the phospholipid substrate (Probable). Can mediate the export of alpha subunits ATP8A1, ATP8B1, ATP8B2 and ATP8B4 from the ER to the plasma membrane.

Cellular Location

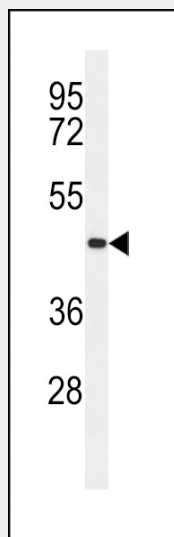
Cell membrane; Multi-pass membrane protein

CC50B Antibody (N-term) - Protocols

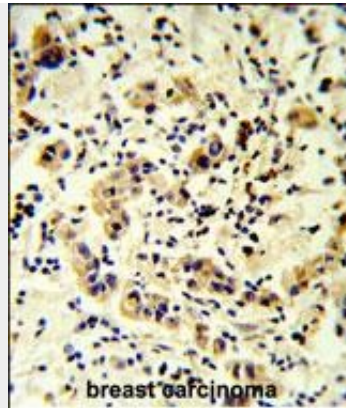
Provided below are standard protocols that you may find useful for product applications.

- [Western Blot](#)
- [Blocking Peptides](#)
- [Dot Blot](#)
- [Immunohistochemistry](#)
- [Immunofluorescence](#)
- [Immunoprecipitation](#)
- [Flow Cytometry](#)
- [Cell Culture](#)

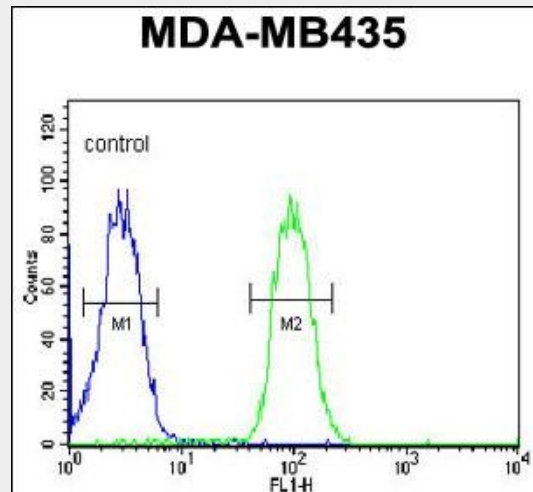
CC50B Antibody (N-term) - Images



Western blot analysis of CC50B Antibody (N-term) (Cat. #AP4968a) in MDA-MB435 cell line lysates (35ug/lane). CC50B (arrow) was detected using the purified Pab.



CC50B Antibody (N-term) (Cat. #AP4968a) IHC analysis in formalin fixed and paraffin embedded human breast carcinoma followed by peroxidase conjugation of the secondary antibody and DAB staining. This data demonstrates the use of the CC50B Antibody (N-term) for immunohistochemistry. Clinical relevance has not been evaluated.



CC50B Antibody (N-term) (Cat. #AP4968a) flow cytometric analysis of MDA-MB435 cells (right histogram) compared to a negative control cell (left histogram). FITC-conjugated goat-anti-rabbit secondary antibodies were used for the analysis.

CC50B Antibody (N-term) - References

Katoh, Y., et al. Oncol. Rep. 12(4):939-943(2004)