

FA20A Antibody (N-term)
Affinity Purified Rabbit Polyclonal Antibody (Pab)
Catalog # AP4969a**Specification**

FA20A Antibody (N-term) - Product Information

| | |
|-------------------|---------------------------|
| Application | WB, IHC-P, FC,E |
| Primary Accession | Q96MK3 |
| Other Accession | NP_060035 |
| Reactivity | Human |
| Host | Rabbit |
| Clonality | Polyclonal |
| Isotype | Rabbit IgG |
| Calculated MW | 61417 |
| Antigen Region | 48-77 |

FA20A Antibody (N-term) - Additional Information**Gene ID** 54757**Other Names**

Protein FAM20A, FAM20A

Target/Specificity

This FA20A antibody is generated from rabbits immunized with a KLH conjugated synthetic peptide between 48-77 amino acids from the N-terminal region of human FA20A.

Dilution

WB~~1:1000
IHC-P~~1:50~100
FC~~1:10~50

Format

Purified polyclonal antibody supplied in PBS with 0.09% (W/V) sodium azide. This antibody is purified through a protein A column, followed by peptide affinity purification.

Storage

Maintain refrigerated at 2-8°C for up to 2 weeks. For long term storage store at -20°C in small aliquots to prevent freeze-thaw cycles.

Precautions

FA20A Antibody (N-term) is for research use only and not for use in diagnostic or therapeutic procedures.

FA20A Antibody (N-term) - Protein Information**Name** FAM20A ([HGNC:23015](#))

Function Pseudokinase that acts as an allosteric activator of the Golgi serine/threonine protein kinase FAM20C and is involved in biomineralization of teeth. Forms a complex with FAM20C and increases the ability of FAM20C to phosphorylate the proteins that form the 'matrix' that guides the deposition of the enamel minerals.

Cellular Location

Secreted {ECO:0000250|UniProtKB:Q8CID3}. Golgi apparatus. Endoplasmic reticulum {ECO:0000250|UniProtKB:Q8CID3}

Tissue Location

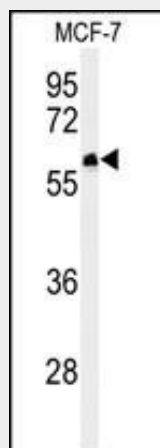
Highly expressed in lung and liver. Intermediate levels in thymus and ovary.

FA20A Antibody (N-term) - Protocols

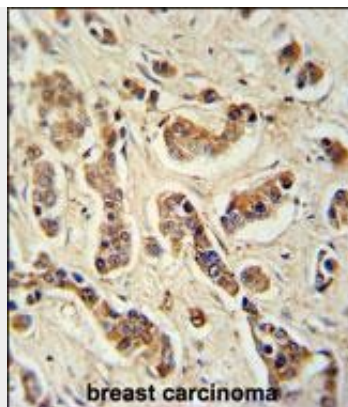
Provided below are standard protocols that you may find useful for product applications.

- [Western Blot](#)
- [Blocking Peptides](#)
- [Dot Blot](#)
- [Immunohistochemistry](#)
- [Immunofluorescence](#)
- [Immunoprecipitation](#)
- [Flow Cytometry](#)
- [Cell Culture](#)

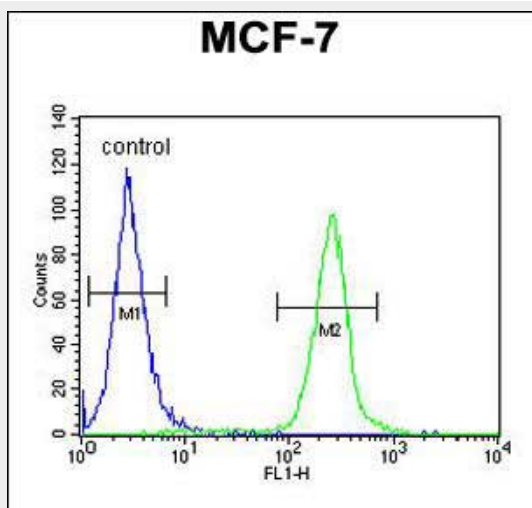
FA20A Antibody (N-term) - Images



Western blot analysis of FA20A Antibody (N-term) (Cat. #AP4969a) in MCF-7 cell line lysates (35ug/lane). FA20A (arrow) was detected using the purified Pab.



FA20A Antibody (N-term) (Cat. #AP4969a) immunohistochemistry analysis in formalin fixed and paraffin embedded human breast carcinoma tissue followed by peroxidase conjugation of the secondary antibody and DAB staining. This data demonstrates the use of the FA20A Antibody (N-term) for immunohistochemistry. Clinical relevance has not been evaluated.



FA20A Antibody (N-term) (Cat. #AP4969a) flow cytometric analysis of MCF-7 cells (right histogram) compared to a negative control cell (left histogram). FITC-conjugated goat-anti-rabbit secondary antibodies were used for the analysis.

FA20A Antibody (N-term) - References

Nalbant, D., et al. BMC Genomics 6 (1), 11 (2005)