

K0406 Antibody (N-term)
Affinity Purified Rabbit Polyclonal Antibody (Pab)
Catalog # AP4976a**Specification**

K0406 Antibody (N-term) - Product Information

| | |
|-------------------|---------------------------|
| Application | WB,E |
| Primary Accession | O43156 |
| Other Accession | NP_055472 |
| Reactivity | Human |
| Host | Rabbit |
| Clonality | Polyclonal |
| Isotype | Rabbit IgG |
| Calculated MW | 122069 |
| Antigen Region | 41-69 |

K0406 Antibody (N-term) - Additional Information**Gene ID** 9675**Other Names**

TELO2-interacting protein 1 homolog, Protein SMG10, TTI1, KIAA0406, SMG10

Target/Specificity

This K0406 antibody is generated from rabbits immunized with a KLH conjugated synthetic peptide between 41-69 amino acids from the N-terminal region of human K0406.

Dilution

WB~~1:1000

Format

Purified polyclonal antibody supplied in PBS with 0.09% (W/V) sodium azide. This antibody is purified through a protein A column, followed by peptide affinity purification.

Storage

Maintain refrigerated at 2-8°C for up to 2 weeks. For long term storage store at -20°C in small aliquots to prevent freeze-thaw cycles.

Precautions

K0406 Antibody (N-term) is for research use only and not for use in diagnostic or therapeutic procedures.

K0406 Antibody (N-term) - Protein Information**Name** TTI1**Synonyms** KIAA0406, SMG10

Function Regulator of the DNA damage response (DDR). Part of the TTT complex that is required to stabilize protein levels of the phosphatidylinositol 3-kinase-related protein kinase (PIKK) family proteins. The TTT complex is involved in the cellular resistance to DNA damage stresses, like ionizing radiation (IR), ultraviolet (UV) and mitomycin C (MMC). Together with the TTT complex and HSP90 may participate in the proper folding of newly synthesized PIKKs. Promotes assembly, stabilizes and maintains the activity of mTORC1 and mTORC2 complexes, which regulate cell growth and survival in response to nutrient and hormonal signals.

Cellular Location

Cytoplasm.

Tissue Location

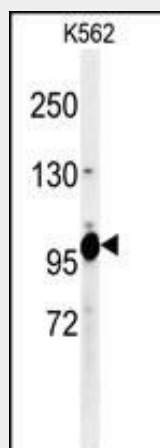
Widely expressed.

K0406 Antibody (N-term) - Protocols

Provided below are standard protocols that you may find useful for product applications.

- [Western Blot](#)
- [Blocking Peptides](#)
- [Dot Blot](#)
- [Immunohistochemistry](#)
- [Immunofluorescence](#)
- [Immunoprecipitation](#)
- [Flow Cytometry](#)
- [Cell Culture](#)

K0406 Antibody (N-term) - Images



Western blot analysis of K0406 Antibody (N-term) (Cat. #AP4976a) in K562 cell line lysates (35ug/lane). K0406 (arrow) was detected using the purified Pab.

K0406 Antibody (N-term) - References

Olsen, J.V., et al. Cell 127(3):635-648(2006)
Deloukas, P., et al. Nature 414(6866):865-871(2001)