

ASM3A Antibody (C-term)
Affinity Purified Rabbit Polyclonal Antibody (Pab)
Catalog # AP4977b**Specification**

ASM3A Antibody (C-term) - Product Information

Application	FC, IHC-P, WB,E
Primary Accession	O92484
Other Accession	O3ZC91 , NP_006705
Reactivity	Human
Predicted	Bovine
Host	Rabbit
Clonality	Polyclonal
Isotype	Rabbit IgG
Calculated MW	51260
Antigen Region	321-349

ASM3A Antibody (C-term) - Additional Information**Gene ID** 10924**Other Names**

Acid sphingomyelinase-like phosphodiesterase 3a, ASM-like phosphodiesterase 3a, 314-, SMPDL3A, ASML3A

Target/Specificity

This ASM3A antibody is generated from rabbits immunized with a KLH conjugated synthetic peptide between 321-349 amino acids from the C-terminal region of human ASM3A.

Dilution

FC~~1:10~50

IHC-P~~1:50~100

WB~~1:1000

E~~Use at an assay dependent concentration.

Format

Purified polyclonal antibody supplied in PBS with 0.09% (W/V) sodium azide. This antibody is purified through a protein A column, followed by peptide affinity purification.

Storage

Maintain refrigerated at 2-8°C for up to 2 weeks. For long term storage store at -20°C in small aliquots to prevent freeze-thaw cycles.

Precautions

ASM3A Antibody (C-term) is for research use only and not for use in diagnostic or therapeutic procedures.

ASM3A Antibody (C-term) - Protein Information

Name SMPDL3A {ECO:0000303|PubMed:25288789, ECO:0000312|HGNC:HGNC:17389}

Function Cyclic-nucleotide phosphodiesterase that acts as a negative regulator of innate immunity by mediating degradation of 2',3'-cGAMP, thereby inhibiting the cGAS-STING signaling (PubMed:[37890481](#)). Specifically linearizes 2',3'-cGAMP into 2'5'-bond pGpA and further hydrolyzes pGpA to produce GpA (PubMed:[37890481](#)). Also has in vitro nucleotide phosphodiesterase activity with nucleoside triphosphates, such as ATP (PubMed:[25288789](#), PubMed:[26783088](#)). Has in vitro activity with p-nitrophenyl-TMP (PubMed:[25288789](#)). Has lower activity with nucleoside diphosphates, and no activity with nucleoside monophosphates (PubMed:[25288789](#), PubMed:[26783088](#), PubMed:[28104755](#)). Has in vitro activity with CDP-choline, giving rise to CMP and phosphocholine. Has in vitro activity with CDP-ethanolamine (PubMed:[26783088](#)). Does not have sphingomyelin phosphodiesterase activity (PubMed:[25288789](#), PubMed:[26783088](#)).

Cellular Location

Secreted

Tissue Location

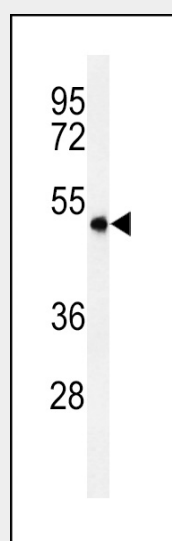
Detected in blood serum. Detected in macrophages (at protein level).

ASM3A Antibody (C-term) - Protocols

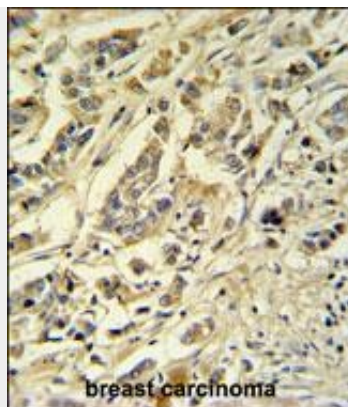
Provided below are standard protocols that you may find useful for product applications.

- [Western Blot](#)
- [Blocking Peptides](#)
- [Dot Blot](#)
- [Immunohistochemistry](#)
- [Immunofluorescence](#)
- [Immunoprecipitation](#)
- [Flow Cytometry](#)
- [Cell Culture](#)

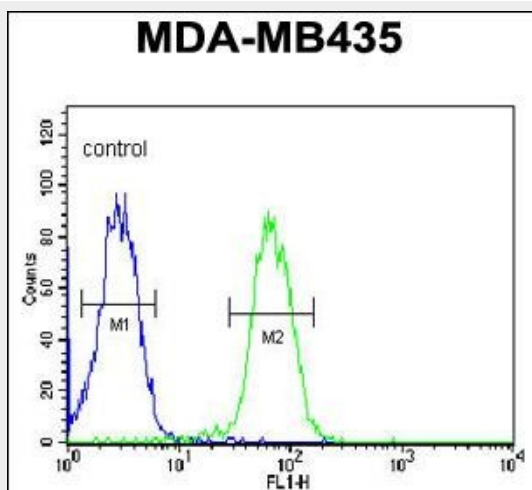
ASM3A Antibody (C-term) - Images



Western blot analysis of ASM3A Antibody (C-term) (Cat. #AP4977b) in MDA-MB435 cell line lysates (35ug/lane). ASM3A (arrow) was detected using the purified Pab.



ASM3A Antibody (C-term) (Cat. #AP4977b) IHC analysis in formalin fixed and paraffin embedded breast carcinoma followed by peroxidase conjugation of the secondary antibody and DAB staining. This data demonstrates the use of the ASM3A Antibody (C-term) for immunohistochemistry. Clinical relevance has not been evaluated.



ASM3A Antibody (C-term) (Cat. #AP4977b) flow cytometric analysis of MDA-MB435 cells (right histogram) compared to a negative control cell (left histogram). FITC-conjugated goat-anti-rabbit secondary antibodies were used for the analysis.

ASM3A Antibody (C-term) - References

Mungall, A.J., et al. Nature 425(6960):805-811(2003)
Wright, K.O., et al. J. Urol. 168(6):2645-2649(2002)