

EFR3A Antibody (C-term)
Affinity Purified Rabbit Polyclonal Antibody (Pab)
Catalog # AP4982b**Specification**

EFR3A Antibody (C-term) - Product Information

Application	WB, FC,E
Primary Accession	Q14156
Other Accession	NP_055952
Reactivity	Human
Host	Rabbit
Clonality	Polyclonal
Isotype	Rabbit IgG
Calculated MW	92924
Antigen Region	636-664

EFR3A Antibody (C-term) - Additional Information**Gene ID** 23167**Other Names**

Protein EFR3 homolog A, Protein EFR3-like, EFR3A, KIAA0143

Target/Specificity

This EFR3A antibody is generated from rabbits immunized with a KLH conjugated synthetic peptide between 636-664 amino acids from the C-terminal region of human EFR3A.

Dilution

WB~~1:1000

FC~~1:10~50

Format

Purified polyclonal antibody supplied in PBS with 0.09% (W/V) sodium azide. This antibody is purified through a protein A column, followed by peptide affinity purification.

Storage

Maintain refrigerated at 2-8°C for up to 2 weeks. For long term storage store at -20°C in small aliquots to prevent freeze-thaw cycles.

Precautions

EFR3A Antibody (C-term) is for research use only and not for use in diagnostic or therapeutic procedures.

EFR3A Antibody (C-term) - Protein Information**Name** EFR3A ([HGNC:28970](#))**Function** Component of a complex required to localize phosphatidylinositol 4-kinase (PI4K) to the

plasma membrane (PubMed:[23229899](#), PubMed:[25608530](#), PubMed:[26571211](#)). The complex acts as a regulator of phosphatidylinositol 4-phosphate (PtdIns(4)P) synthesis (Probable). In the complex, EFR3A probably acts as the membrane-anchoring component (PubMed:[23229899](#)). Also involved in responsiveness to G-protein-coupled receptors; it is however unclear whether this role is direct or indirect (PubMed:[25380825](#)).

Cellular Location

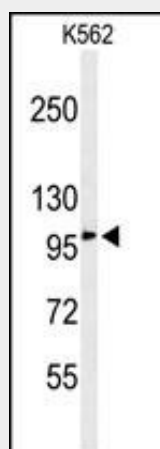
Cell membrane; Lipid-anchor. Cytoplasm, cytosol. Note=Palmitoylation anchors the protein to the plasma membrane (PubMed:[23229899](#), PubMed:[25380825](#), PubMed:[26571211](#)). A small amount is observed in the cytosol (PubMed:[25380825](#)).

EFR3A Antibody (C-term) - Protocols

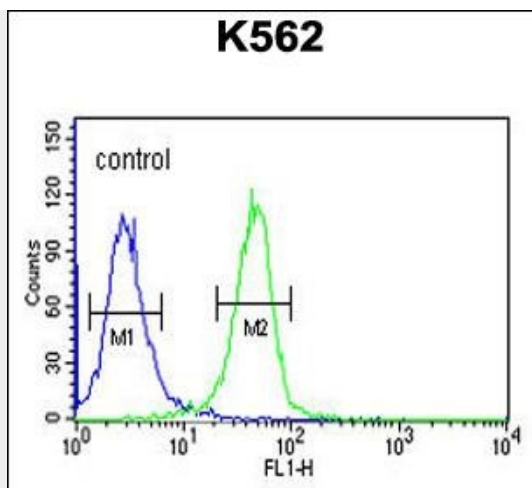
Provided below are standard protocols that you may find useful for product applications.

- [Western Blot](#)
- [Blocking Peptides](#)
- [Dot Blot](#)
- [Immunohistochemistry](#)
- [Immunofluorescence](#)
- [Immunoprecipitation](#)
- [Flow Cytometry](#)
- [Cell Culture](#)

EFR3A Antibody (C-term) - Images



Western blot analysis of EFR3A Antibody (C-term) (Cat. #AP4982b) in K562 cell line lysates (35ug/lane). EFR3A (arrow) was detected using the purified Pab.



EFR3A Antibody (C-term) (Cat. #AP4982b) flow cytometric analysis of K562 cells (right histogram) compared to a negative control cell (left histogram). FITC-conjugated goat-anti-rabbit secondary antibodies were used for the analysis.

EFR3A Antibody (C-term) - References

Munemoto, Y., et al. Brain Res. Mol. Brain Res. 128(2):131-140(2004)