

**RAB27B Antibody (C-term)**  
**Affinity Purified Rabbit Polyclonal Antibody (Pab)**  
**Catalog # AP4986b****Specification**

---

**RAB27B Antibody (C-term) - Product Information**

Application	FC, WB,E
Primary Accession	<a href="#">O00194</a>
Other Accession	<a href="#">NP_004154</a>
Reactivity	Human
Host	Rabbit
Clonality	Polyclonal
Isotype	Rabbit IgG
Calculated MW	24608
Antigen Region	186-215

**RAB27B Antibody (C-term) - Additional Information****Gene ID** 5874**Other Names**

Ras-related protein Rab-27B, C25KG, RAB27B

**Target/Specificity**

This RAB27B antibody is generated from rabbits immunized with a KLH conjugated synthetic peptide between 186-215 amino acids from the C-terminal region of human RAB27B.

**Dilution**

FC~~1:10~50

WB~~1:1000

E~~Use at an assay dependent concentration.

**Format**

Purified polyclonal antibody supplied in PBS with 0.09% (W/V) sodium azide. This antibody is purified through a protein A column, followed by peptide affinity purification.

**Storage**

Maintain refrigerated at 2-8°C for up to 2 weeks. For long term storage store at -20°C in small aliquots to prevent freeze-thaw cycles.

**Precautions**

RAB27B Antibody (C-term) is for research use only and not for use in diagnostic or therapeutic procedures.

**RAB27B Antibody (C-term) - Protein Information****Name** RAB27B

**Function** Small GTPase which cycles between active GTP-bound and inactive GDP-bound states. In its active state, binds to a variety of effector proteins to regulate homeostasis of late endocytic pathway, including endosomal positioning, maturation and secretion (PubMed:[30771381](#)). Plays a role in NTRK2/TRKB axonal anterograde transport by facilitating the association of NTRK2/TRKB with KLC1 (PubMed:[21775604](#)). May be involved in targeting uroplakins to urothelial apical membranes (By similarity).

**Cellular Location**

Membrane; Lipid-anchor. Late endosome

**Tissue Location**

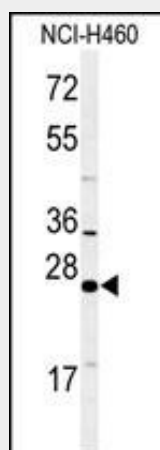
Expressed primarily in testis.

**RAB27B Antibody (C-term) - Protocols**

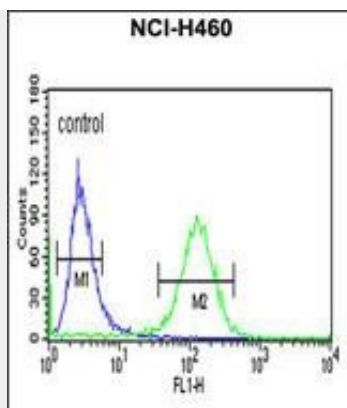
Provided below are standard protocols that you may find useful for product applications.

- [Western Blot](#)
- [Blocking Peptides](#)
- [Dot Blot](#)
- [Immunohistochemistry](#)
- [Immunofluorescence](#)
- [Immunoprecipitation](#)
- [Flow Cytometry](#)
- [Cell Culture](#)

**RAB27B Antibody (C-term) - Images**



Western blot analysis of RAB27B Antibody (C-term) (Cat. #AP4986b) in NCI-H460 cell line lysates (35ug/lane). RAB27B (arrow) was detected using the purified Pab.



RAB27B Antibody (C-term) (Cat. #AP4986b) flow cytometric analysis of NCI-H460 cells (right histogram) compared to a negative control cell (left histogram). FITC-conjugated goat-anti-rabbit secondary antibodies were used for the analysis.

#### **RAB27B Antibody (C-term) - Background**

RAB27B may be involved in targeting uroplakins to urothelial apical membranes.

#### **RAB27B Antibody (C-term) - References**

Hayasaka, S., et al. Asian J. Androl. 10(4):561-568(2008)  
Shirakawa, R., et al. J. Biol. Chem. 279(11):10730-10737(2004)  
Tiwari, S., et al. Blood 102(12):3970-3979(2003)