

**KRT35 Antibody (C-term)**  
**Affinity Purified Rabbit Polyclonal Antibody (Pab)**  
**Catalog # AP4993b****Specification**

---

**KRT35 Antibody (C-term) - Product Information**

Application	IHC-P, WB,E
Primary Accession	<a href="#">O92764</a>
Other Accession	<a href="#">O14532</a> , <a href="#">NP_002271</a>
Reactivity	Human
Host	Rabbit
Clonality	Polyclonal
Isotype	Rabbit IgG
Calculated MW	50361
Antigen Region	352-380

**KRT35 Antibody (C-term) - Additional Information****Gene ID** 3886**Other Names**

Keratin, type I cuticular Ha5, Hair keratin, type I Ha5, Keratin-35, K35, KRT35, HHA5, HKA5, KRTHA5

**Target/Specificity**

This KRT35 antibody is generated from rabbits immunized with a KLH conjugated synthetic peptide between 352-380 amino acids from the C-terminal region of human KRT35.

**Dilution**

IHC-P~~1:50~100

WB~~1:1000

E~~Use at an assay dependent concentration.

**Format**

Purified polyclonal antibody supplied in PBS with 0.09% (W/V) sodium azide. This antibody is purified through a protein A column, followed by peptide affinity purification.

**Storage**

Maintain refrigerated at 2-8°C for up to 2 weeks. For long term storage store at -20°C in small aliquots to prevent freeze-thaw cycles.

**Precautions**

KRT35 Antibody (C-term) is for research use only and not for use in diagnostic or therapeutic procedures.

**KRT35 Antibody (C-term) - Protein Information****Name** KRT35

**Synonyms** HHA5, HKA5, KRTHA5

**Tissue Location**

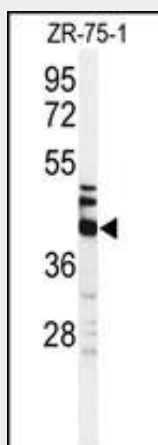
Early expression in the hair follicle, mainly found in supramatrical cells and lowermost cortical cells of the hair bulb

**KRT35 Antibody (C-term) - Protocols**

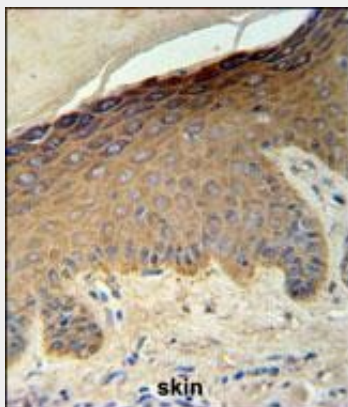
Provided below are standard protocols that you may find useful for product applications.

- [Western Blot](#)
- [Blocking Peptides](#)
- [Dot Blot](#)
- [Immunohistochemistry](#)
- [Immunofluorescence](#)
- [Immunoprecipitation](#)
- [Flow Cytometry](#)
- [Cell Culture](#)

**KRT35 Antibody (C-term) - Images**



Western blot analysis of KRT35 Antibody (C-term) (Cat. #AP4993b) in ZR-75-1 cell line lysates (35ug/lane). KRT35 (arrow) was detected using the purified Pab.



KRT35 Antibody (C-term) (Cat. #AP4993b) IHC analysis in formalin fixed and paraffin embedded skin carcinoma followed by peroxidase conjugation of the secondary antibody and DAB staining.

This data demonstrates the use of the KRT35 Antibody (C-term) for immunohistochemistry. Clinical relevance has not been evaluated.

**KRT35 Antibody (C-term) - Background**

KRT35 is a member of the keratin gene family. This type I hair keratin is an acidic protein which heterodimerizes with type II keratins to form hair and nails. The type I hair keratins are clustered in a region of chromosome 17q12-q21 and have the same direction of transcription.

**KRT35 Antibody (C-term) - References**

Gilon, M., et al. Differentiation 76(5):518-530(2008)  
Schweizer, J., et al. J. Cell Biol. 174(2):169-174(2006)  
Cribier, B., et al. J. Invest. Dermatol. 122(5):1078-1083(2004)