

MCL1 Antibody
Purified Rabbit Polyclonal Antibody (Pab)
Catalog # AP50001**Specification**

MCL1 Antibody - Product Information

Application	WB, IHC
Primary Accession	Q07820
Reactivity	Human, Mouse, Rat
Host	Rabbit
Clonality	Polyclonal
Calculated MW	37,29 KDa
Antigen Region	121-150

MCL1 Antibody - Additional Information**Gene ID** 4170**Other Names**

Induced myeloid leukemia cell differentiation protein Mcl-1, Bcl-2-like protein 3, Bcl2-L-3, Bcl-2-related protein EAT/mcl1, mcl1/EAT, MCL1, BCL2L3

Dilution

WB~~ 1:1000

IHC~~1:50-1:100

Format

Rabbit IgG in phosphate buffered saline (without Mg²⁺ and Ca²⁺), pH 7.4, 150mM NaCl, 0.09% (W/V) sodium azide and 50% glycerol.

Storage Conditions

-20°C

MCL1 Antibody - Protein Information**Name** MCL1**Synonyms** BCL2L3**Function**

Involved in the regulation of apoptosis versus cell survival, and in the maintenance of viability but not of proliferation. Mediates its effects by interactions with a number of other regulators of apoptosis. Isoform 1 inhibits apoptosis. Isoform 2 promotes apoptosis.

Cellular Location

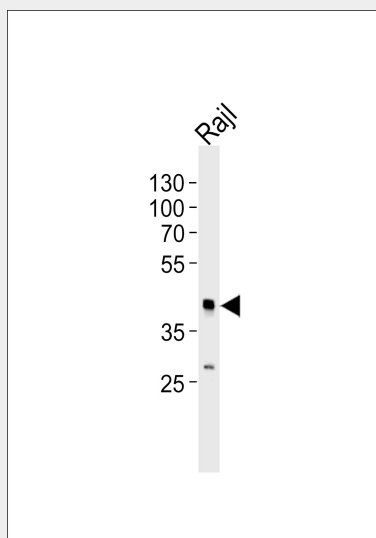
Membrane; Single-pass membrane protein. Cytoplasm. Mitochondrion. Nucleus, nucleoplasm
Note=Cytoplasmic, associated with mitochondria

MCL1 Antibody - Protocols

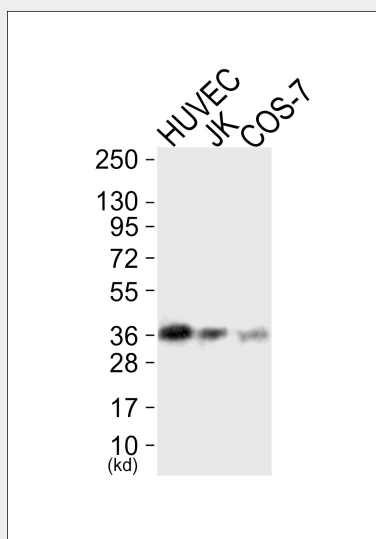
Provided below are standard protocols that you may find useful for product applications.

- [Western Blot](#)
- [Blocking Peptides](#)
- [Dot Blot](#)
- [Immunohistochemistry](#)
- [Immunofluorescence](#)
- [Immunoprecipitation](#)
- [Flow Cytometry](#)
- [Cell Culture](#)

MCL1 Antibody - Images

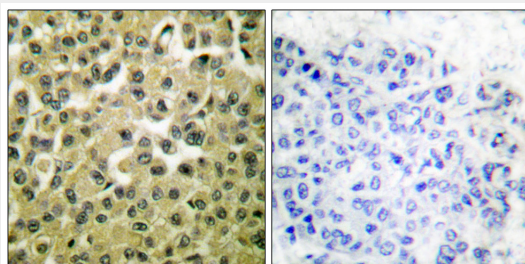


Western blot analysis of lysate from Raji cell line, using MCL1 Antibody (C0258). C0258 was diluted at 1:1000. A goat anti-rabbit IgG H&L (HRP) at 1:5000 dilution was used as the secondary antibody. Lysate at 35 µg.



Western blot analysis of extracts from HUVEC cells (Lane 1), JK cells (Lane 2) and COS-7 cells

(Lane 3), using MCL1 Antibody. The lane on the left is treated with synthesized peptide.



Immunohistochemical analysis of paraffin-embedded human breast carcinoma tissue using MCL1 antibody .

MCL1 Antibody - Background

Involved in the regulation of apoptosis versus cell survival, and in the maintenance of viability but not of proliferation. Mediates its effects by interactions with a number of other regulators of apoptosis. Isoform 1 inhibits apoptosis. Isoform 2 promotes apoptosis.

MCL1 Antibody - References

Kozopas K.M.,et al.Proc. Natl. Acad. Sci. U.S.A. 90:3516-3520(1993).
Umezawa A.,et al.Cell Struct. Funct. 21:143-150(1996).
Akgul C.,et al.Cell. Mol. Life Sci. 57:684-691(2000).
Bingle C.D.,et al.J. Biol. Chem. 275:22136-22146(2000).
Bae J.,et al.J. Biol. Chem. 275:25255-25261(2000).