

CA9 Antibody (Center)
Purified Rabbit Polyclonal Antibody (Pab)
Catalog # AP5000b**Specification**

CA9 Antibody (Center) - Product Information

Application	WB,E
Primary Accession	Q16790
Reactivity	Human
Host	Rabbit
Clonality	Polyclonal
Isotype	Rabbit IgG
Antigen Region	239-263

CA9 Antibody (Center) - Additional Information**Gene ID** 768**Other Names**

Carbonic anhydrase 9, Carbonate dehydratase IX, Carbonic anhydrase IX, CA-IX, CAIX, Membrane antigen MN, P54/58N, Renal cell carcinoma-associated antigen G250, RCC-associated antigen G250, pMW1, CA9, G250, MN

Target/Specificity

This CA9 antibody is generated from rabbits immunized with a KLH conjugated synthetic peptide between 239-263 amino acids from the Central region of human CA9.

Dilution

WB~~1:1000

E~~Use at an assay dependent concentration.

Format

Purified polyclonal antibody supplied in PBS with 0.09% (W/V) sodium azide. This antibody is purified through a protein G column, eluted with high and low pH buffers and neutralized immediately, followed by dialysis against PBS.

Storage

Maintain refrigerated at 2-8°C for up to 2 weeks. For long term storage store at -20°C in small aliquots to prevent freeze-thaw cycles.

Precautions

CA9 Antibody (Center) is for research use only and not for use in diagnostic or therapeutic procedures.

CA9 Antibody (Center) - Protein Information**Name** CA9

Synonyms G250, MN

Function Catalyzes the interconversion between carbon dioxide and water and the dissociated ions of carbonic acid (i.e. bicarbonate and hydrogen ions).

Cellular Location

Nucleus. Nucleus, nucleolus. Cell membrane; Single-pass type I membrane protein. Cell projection, microvillus membrane; Single-pass type I membrane protein. Note=Found on the surface microvilli and in the nucleus, particularly in nucleolus

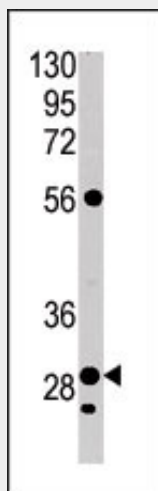
Tissue Location

Expressed primarily in carcinoma cells lines. Expression is restricted to very few normal tissues and the most abundant expression is found in the epithelial cells of gastric mucosa

CA9 Antibody (Center) - Protocols

Provided below are standard protocols that you may find useful for product applications.

- [Western Blot](#)
- [Blocking Peptides](#)
- [Dot Blot](#)
- [Immunohistochemistry](#)
- [Immunofluorescence](#)
- [Immunoprecipitation](#)
- [Flow Cytometry](#)
- [Cell Culture](#)

CA9 Antibody (Center) - Images

The anti-CA9 Pab (Cat. #AP5000b) is used in Western blot to detect CA9 in Jurkat tissue lysate

CA9 Antibody (Center) - Background

Carbonic anhydrases (CAs) are a large family of zinc metalloenzymes that catalyze the reversible hydration of carbon dioxide. They participate in a variety of biological processes, including respiration, calcification, acid-base balance, bone resorption, and the formation of aqueous humor, cerebrospinal fluid, saliva, and gastric acid. They show extensive diversity in tissue distribution and in their subcellular localization. CA IX is a transmembrane protein and the only tumor-associated carbonic anhydrase isoenzyme known. It is expressed in all clear-cell renal cell carcinoma, but is

not detected in normal kidney or most other normal tissues. It may be involved in cell proliferation and transformation. This gene was mapped to 17q21.2 by fluorescence in situ hybridization, however, radiation hybrid mapping localized it to 9p13-p12.

CA9 Antibody (Center) - References

Grabmaier, K., et al., *Oncogene* 23(33):5624-5631 (2004).
Kaluzova, M., et al., *Mol. Cell. Biol.* 24(13):5757-5766 (2004).
Span, P.N., et al., *Br. J. Cancer* 89(2):271-276 (2003).
Hedley, D., et al., *Clin. Cancer Res.* 9(15):5666-5674 (2003).
Bui, M.H., et al., *Clin. Cancer Res.* 9(2):802-811 (2003).